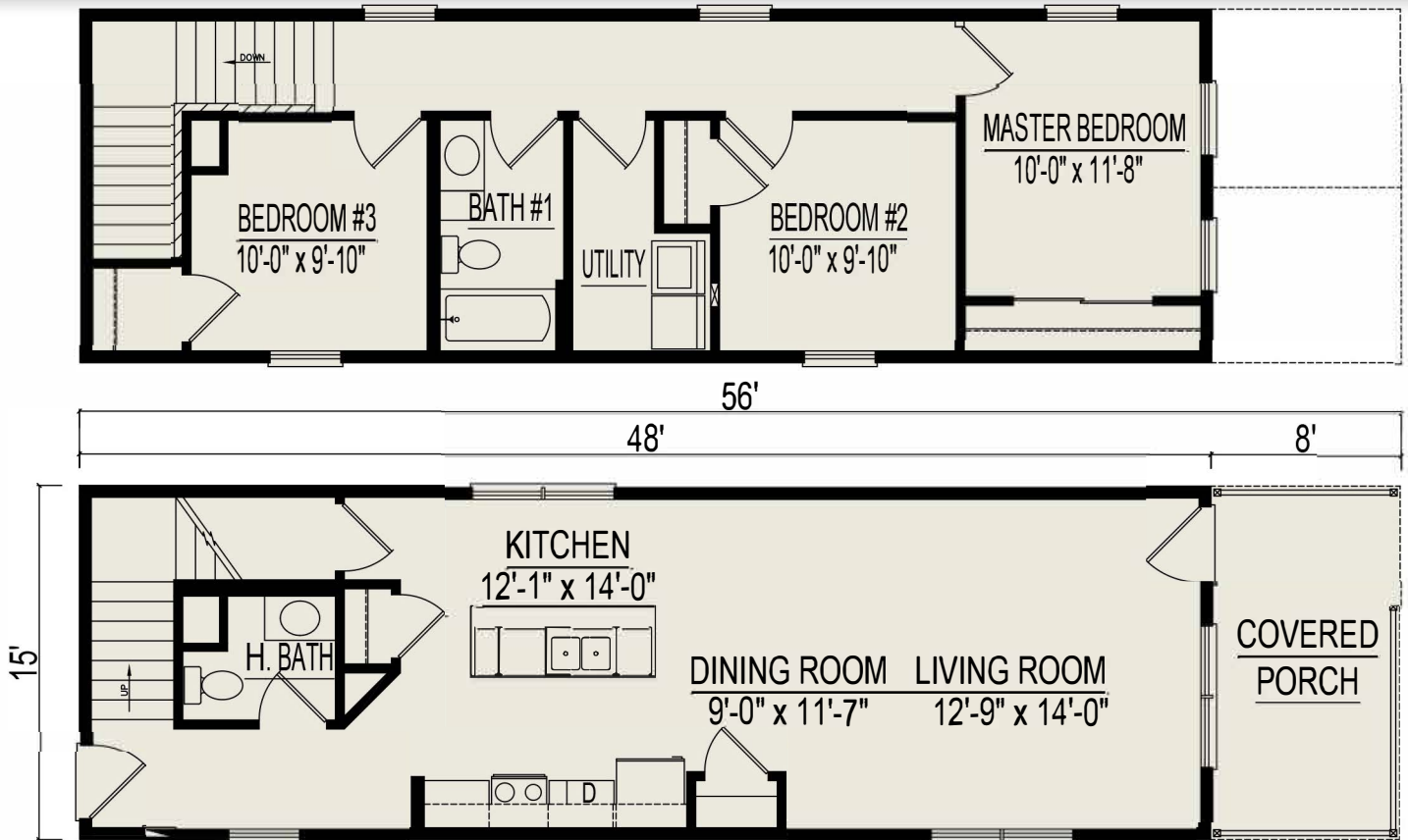




Monroe

3 Bedrooms, 1-1/2 Bathrooms, Porch 1440 Square Feet

Some items shown may be optional or constructed on site



CONVENIENT,
COST-EFFECTIVE,
HIGH-QUALITY HOMES

CALL MARTY (231) 463 3900
350 W. Wexford Ave. (M-37)
Buckley, MI 49620