



CONVENIENT,  
COST-EFFECTIVE,  
HIGH-QUALITY HOMES

**350 W. Wexford Ave.  
Buckley, Michigan 49620**

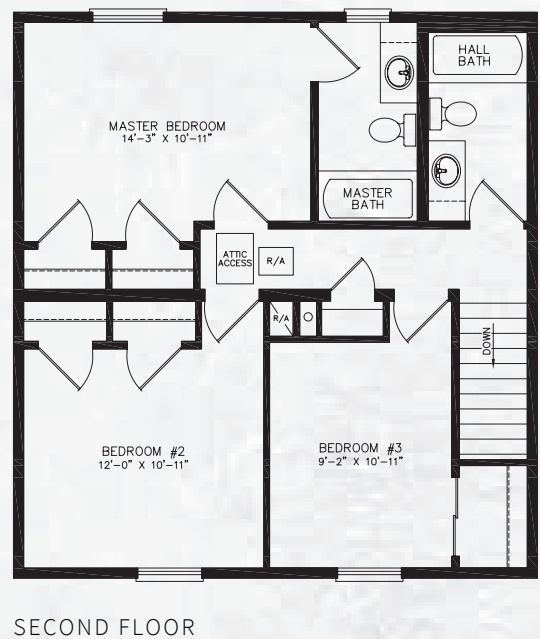
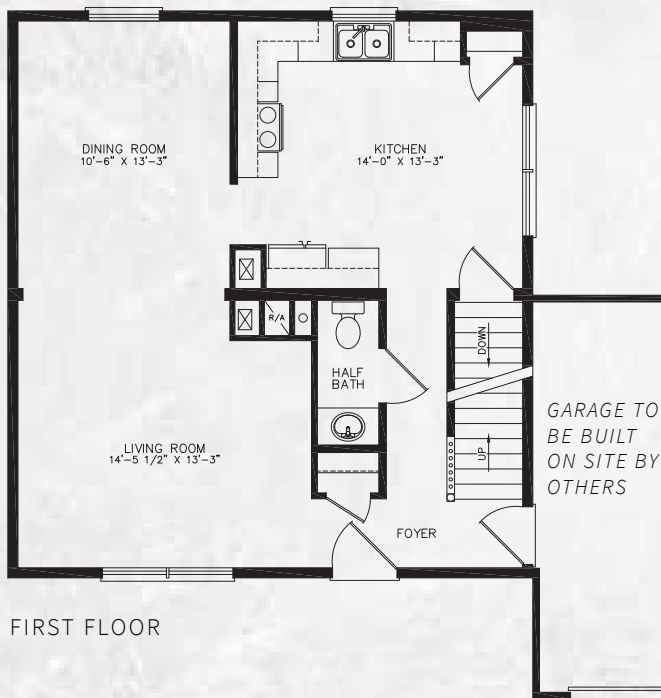
**(231) 463-3900**

**[carriagecustomhomes.com](http://carriagecustomhomes.com)**



# Adams

SQ. FT.	1,456
DIMENSIONS	28 x 26
BEDROOMS	3
BATHS	2 1/2



**Heckaman  
Homes**



CONVENIENT,  
COST-EFFECTIVE,  
HIGH QUALITY HOMES

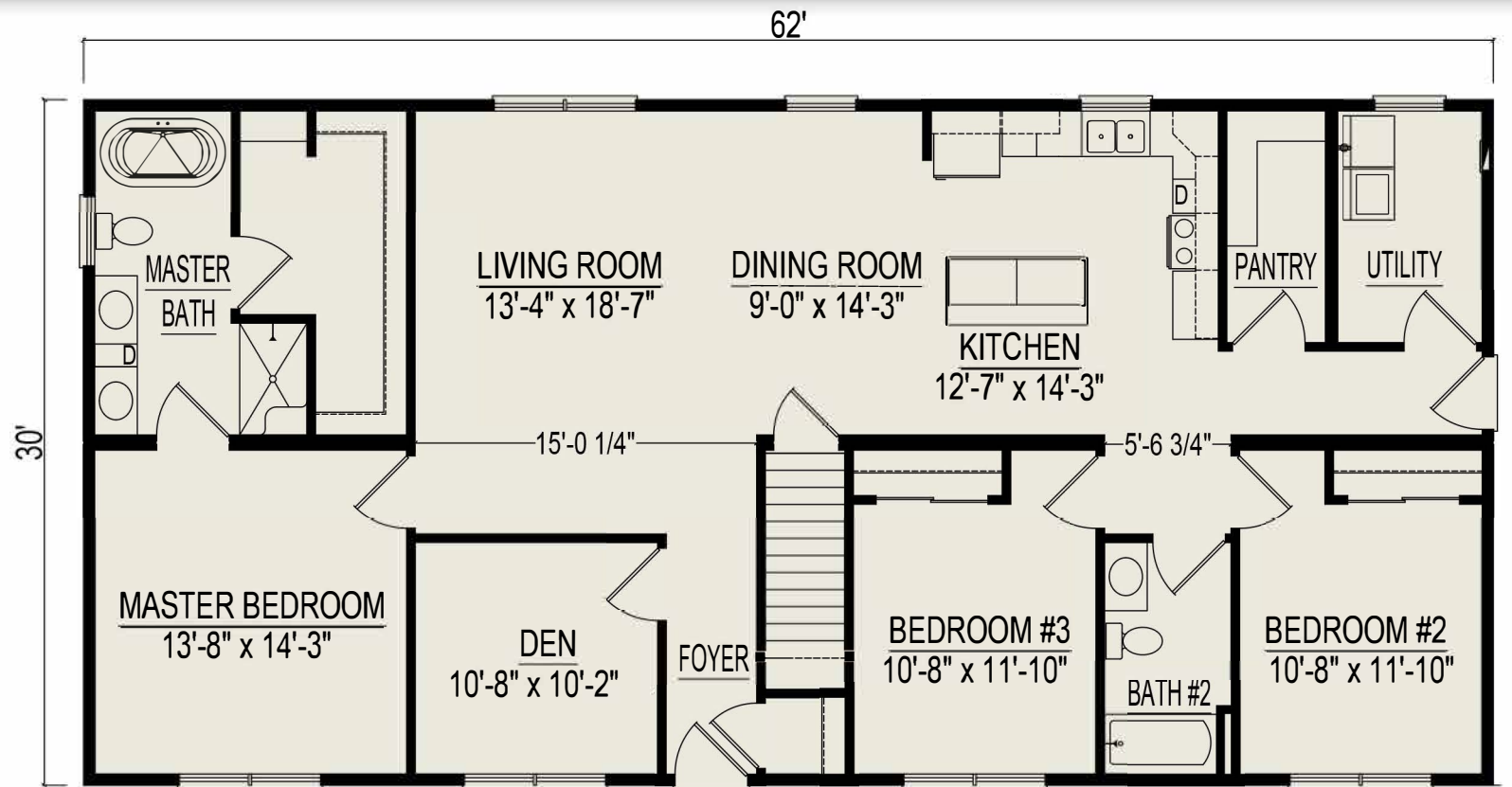
CALL MARTY (231) 463 3900  
350 W. Wexford Ave. (M-37)  
Buckley, MI 49620



# Amarillo

3 Bedrooms, 2 Bathrooms, Bonus Room, 1860 Square Feet

Some Items shown may be optional or constructed on site



**Heckaman  
Homes**



CONVENIENT,  
COST-EFFECTIVE,  
HIGH QUALITY HOMES

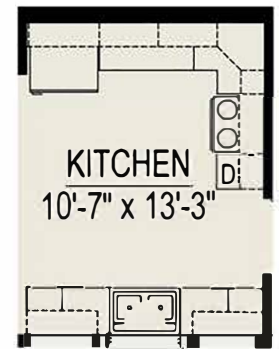
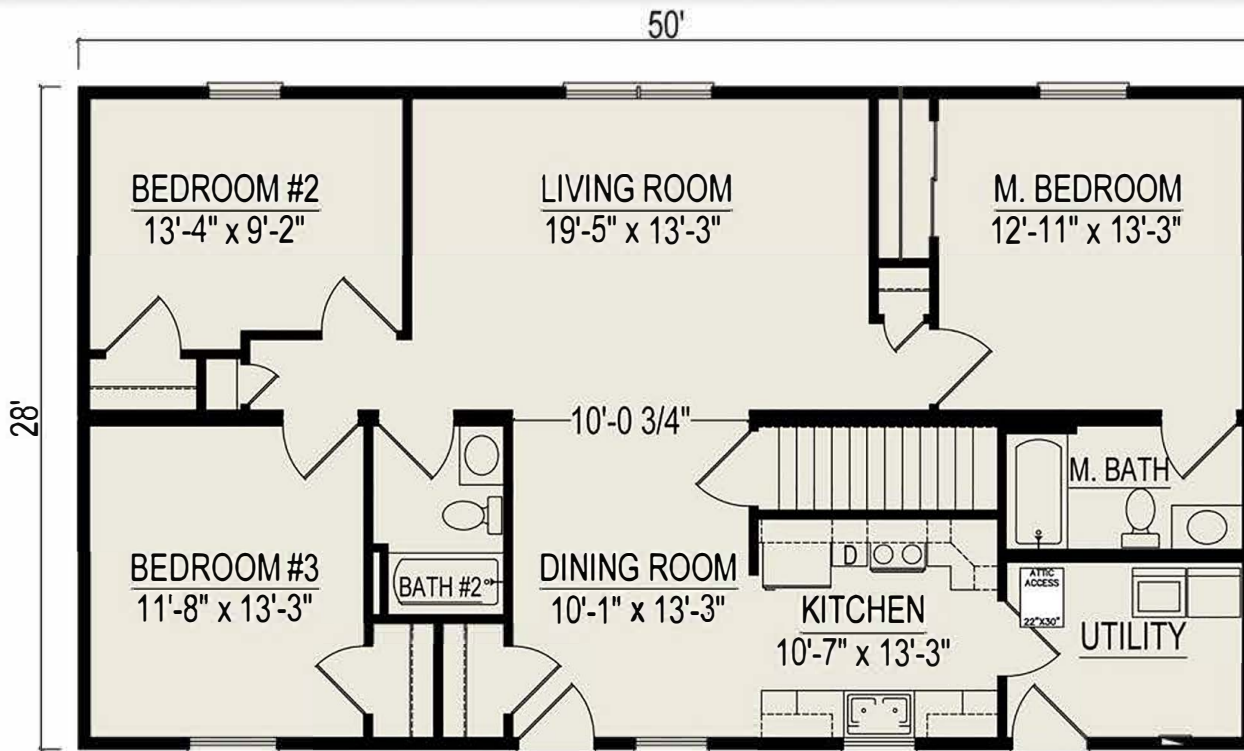
CALL MARTY (231) 463 3900  
350 W. Wexford Ave. (M-37)  
Buckley, MI 49620



# America II

3 Bedrooms, 2 Bathrooms, 1400 Square Feet

Some items shown may be optional or constructed on site



CRAWLSPACE PLAN

**Heckaman  
Homes**



CONVENIENT,  
COST-EFFECTIVE,  
HIGH QUALITY HOMES

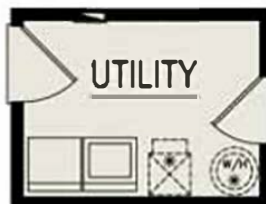
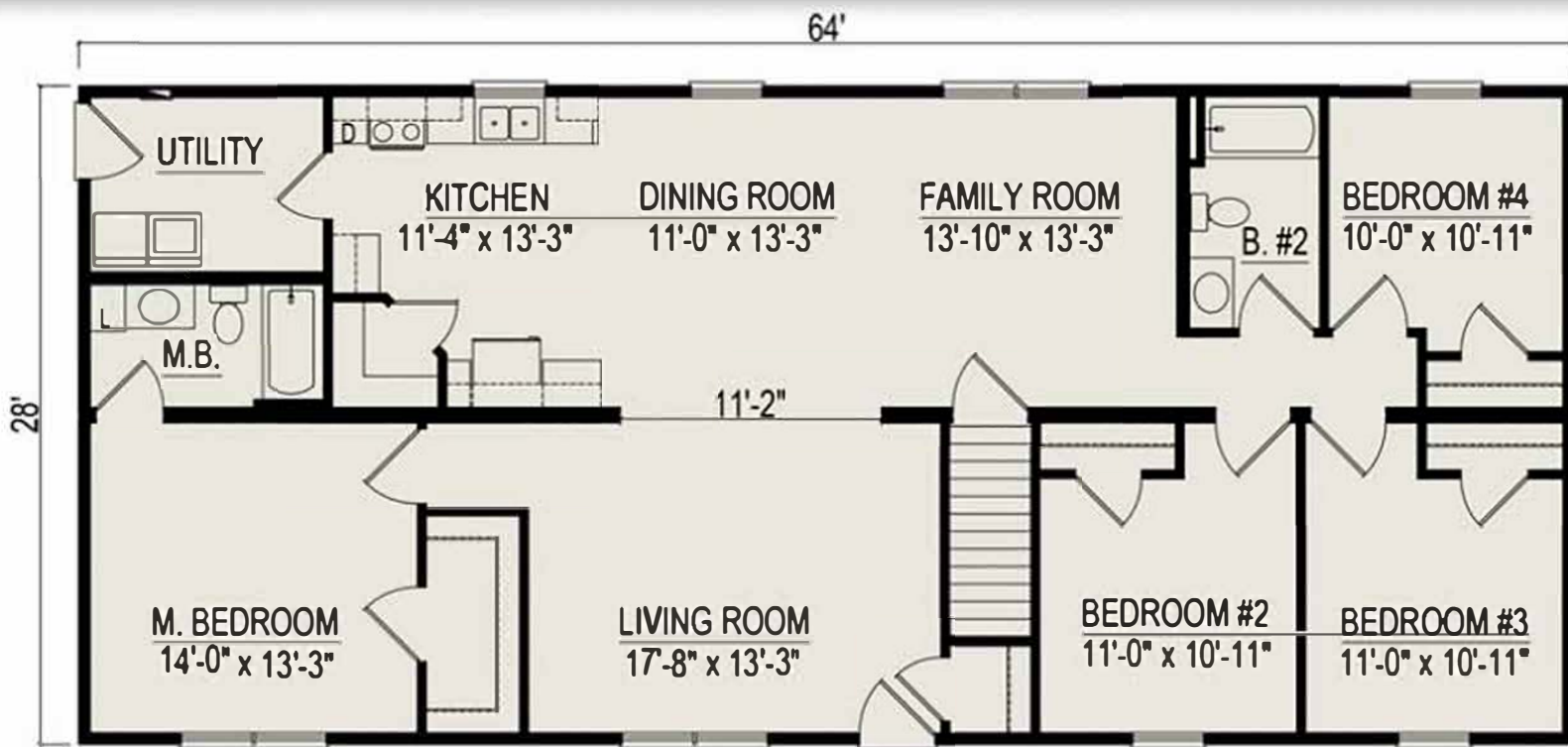
CALL MARTY (231) 463 3900  
350 W. Wexford Ave. (M-37)  
Buckley, MI 49620



# Anderson II

4 Bedrooms, 2 Bathrooms, 1792 Square Feet

Some items shown may be optional or constructed on site



**CRAWLSPACE  
PLAN**

**Heckaman  
Homes**



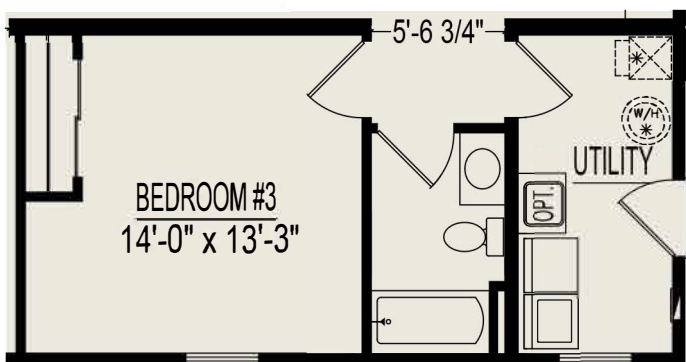
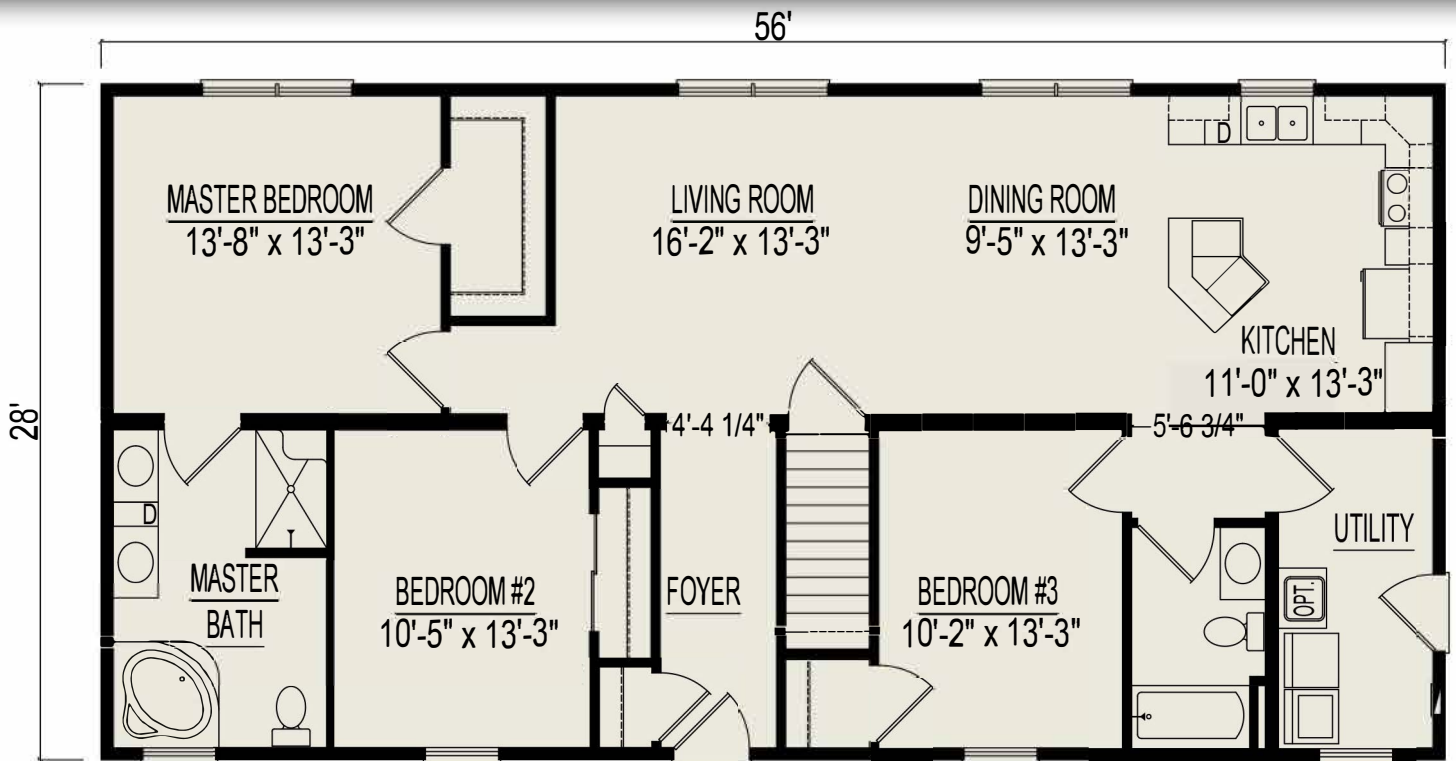
CONVENIENT,  
COST-EFFECTIVE,  
HIGH QUALITY HOMES

CALL MARTY (231) 463 3900  
350 W. Wexford Ave. (M-37)  
Buckley, MI 49620



# Ashford

3 Bedrooms, 2 Bathrooms, 1568 Square Feet  
 Some items shown may be optional or constructed on site



CRAWLSPACE PLAN

**Heckaman  
Homes**



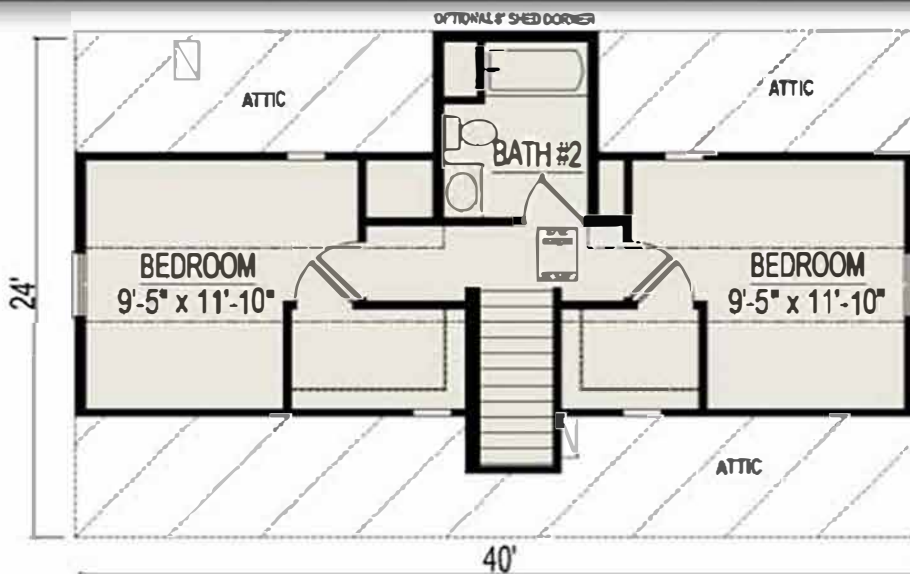
CONVENIENT,  
 COST-EFFECTIVE,  
 HIGH QUALITY HOMES

CALL MARTY (231) 463 3900  
 350 W. Wexford Ave. (M-37)  
 Buckley, MI 49620



# Bayshore II

2 Bedrooms, 1 Bathroom, 960 Square Feet  
 500 Square Feet for Proposed 2nd Floor  
 Some items shown may be optional or constructed on site



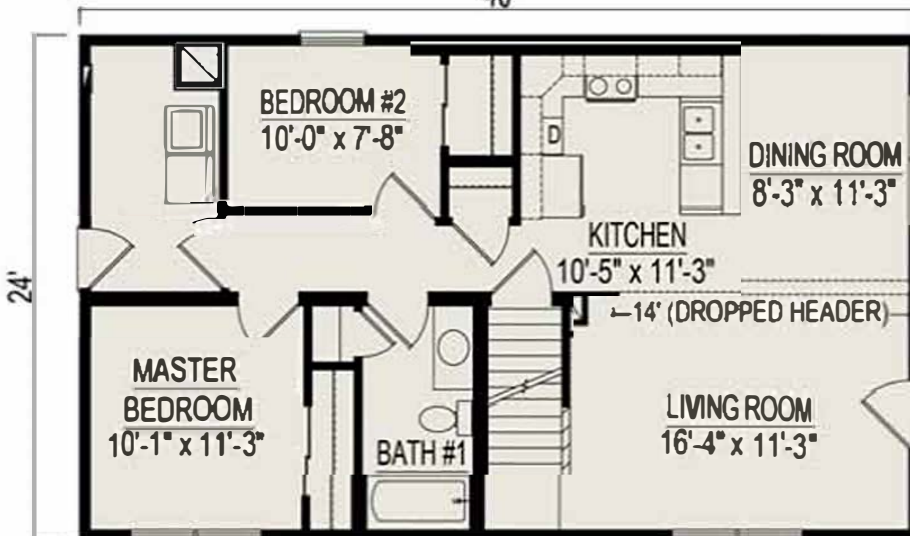
**Heckaman  
Homes**



CONVENIENT,  
 COST-EFFECTIVE,  
 HIGH QUALITY HOMES

CALL MARTY (231) 463 3900  
 350 W. Wexford Ave. (M-37)  
 Buckley, MI 49620

**Proposed 2nd Floor Plan  
 (Finished on site by others)**



**1st Floor Basement Plan**

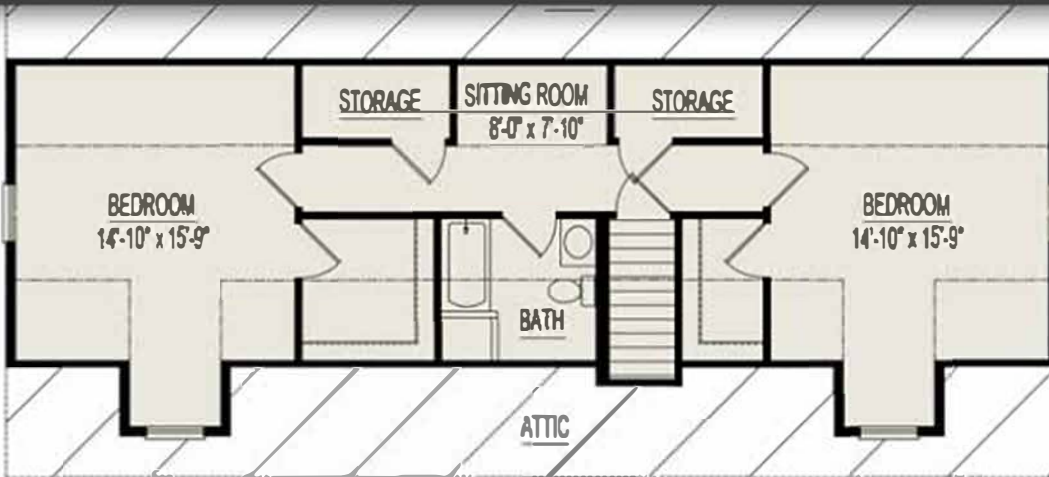


**Crawl Space Plan**



# Beach House

3 Bedrooms, 2 Bathrooms, 1568 Square Feet  
 882 Square Feet for Proposed 2nd Floor  
 Some Items shown may be optional or constructed on site



**Proposed 2nd Floor Plan**  
 (Finished on site by others)



**1st Floor Basement Plan**

**Heckaman  
Homes**



CONVENIENT,  
 COST-EFFECTIVE,  
 HIGH-QUALITY HOMES

CALL MARTY (231) 463 3900  
 350 W. Wexford Ave. (M-37)  
 Buckley, MI 49620

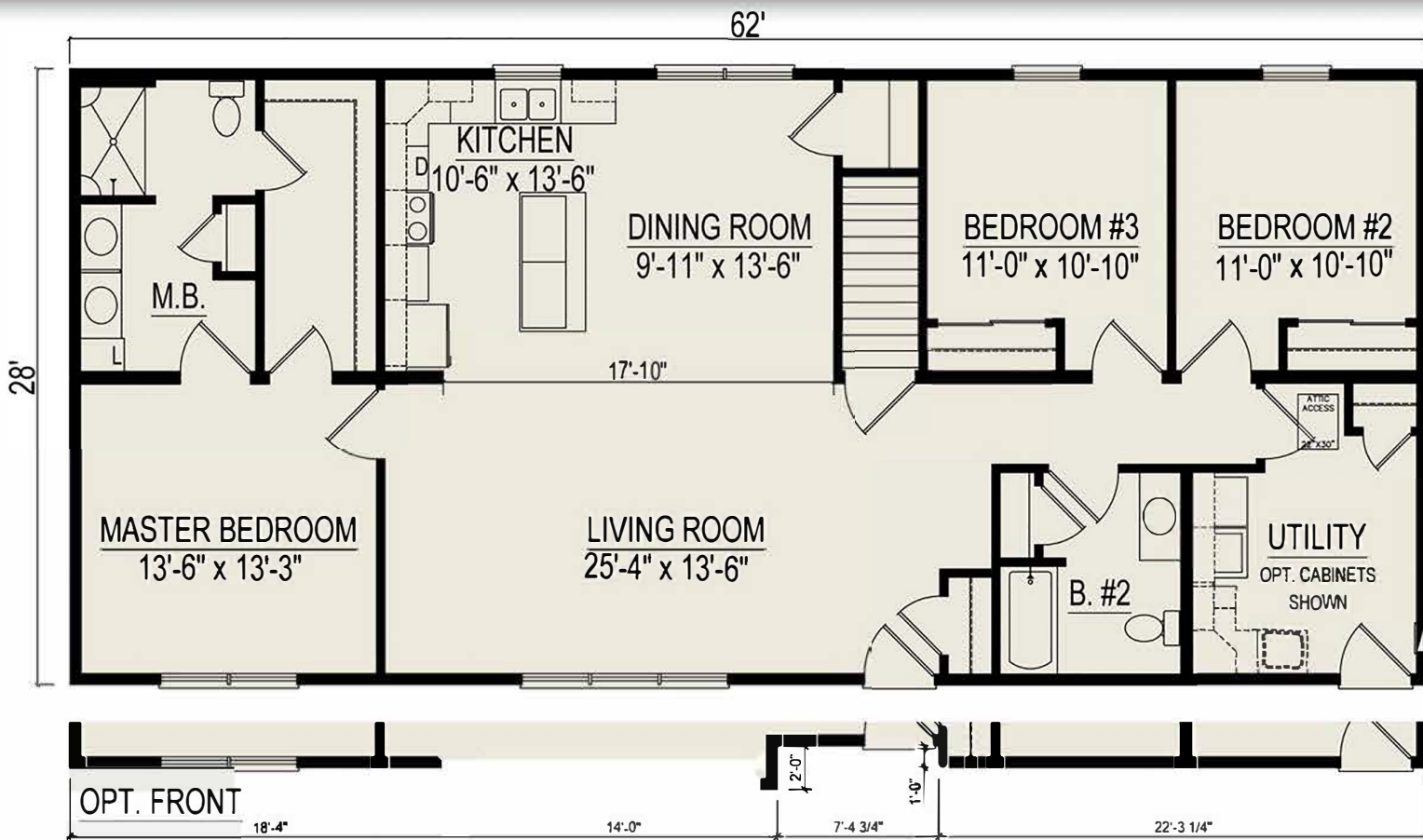




# Brentwood II

3 Bedrooms, 2 Bathrooms, 1736 Square Feet

Some items shown may be optional or constructed on site



**Heckaman  
Homes**



CONVENIENT,  
COST-EFFECTIVE,  
HIGH QUALITY HOMES

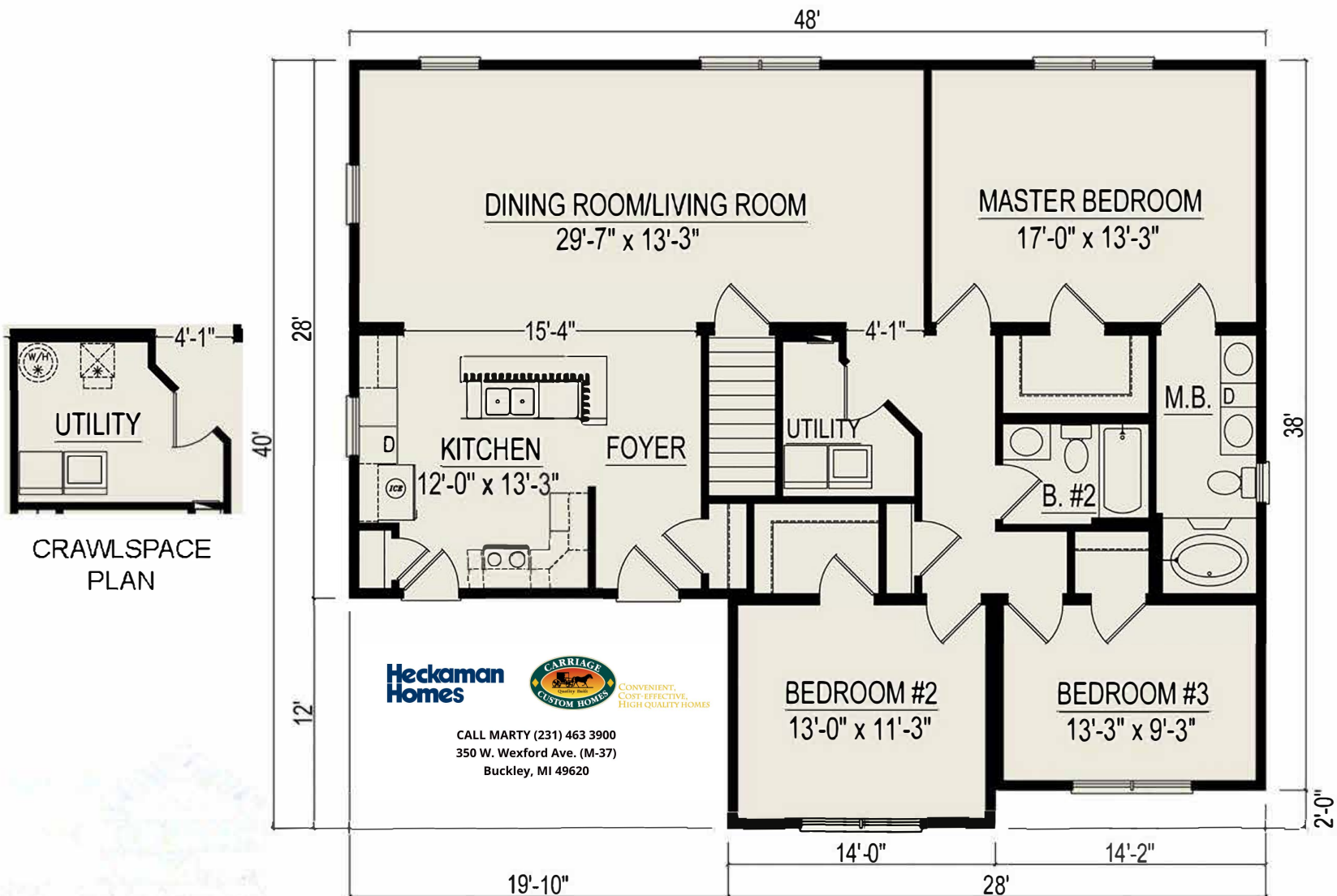
CALL MARTY (231) 463 3900  
350 W. Wexford Ave. (M-37)  
Buckley, MI 49620



# Bridgeport II

3 Bedrooms, 2 Bathrooms, 1652 Square Feet

Some items shown may be optional or constructed on site

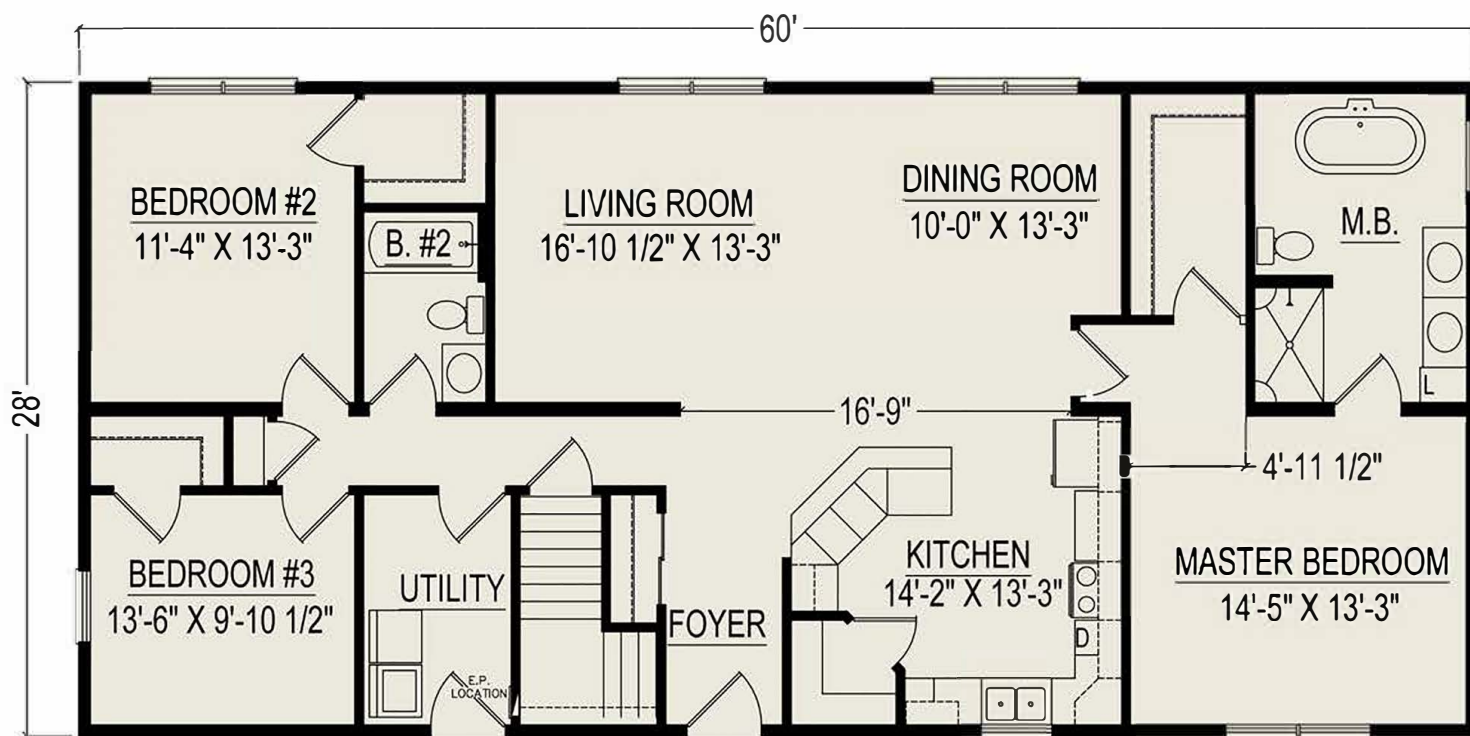




# Bridgewood II

3 Bedrooms, 2 Bathrooms, 1680 Square Feet

Some items shown may be optional or constructed on site



**Heckaman  
Homes**



CONVENIENT,  
COST-EFFECTIVE,  
HIGH QUALITY HOMES

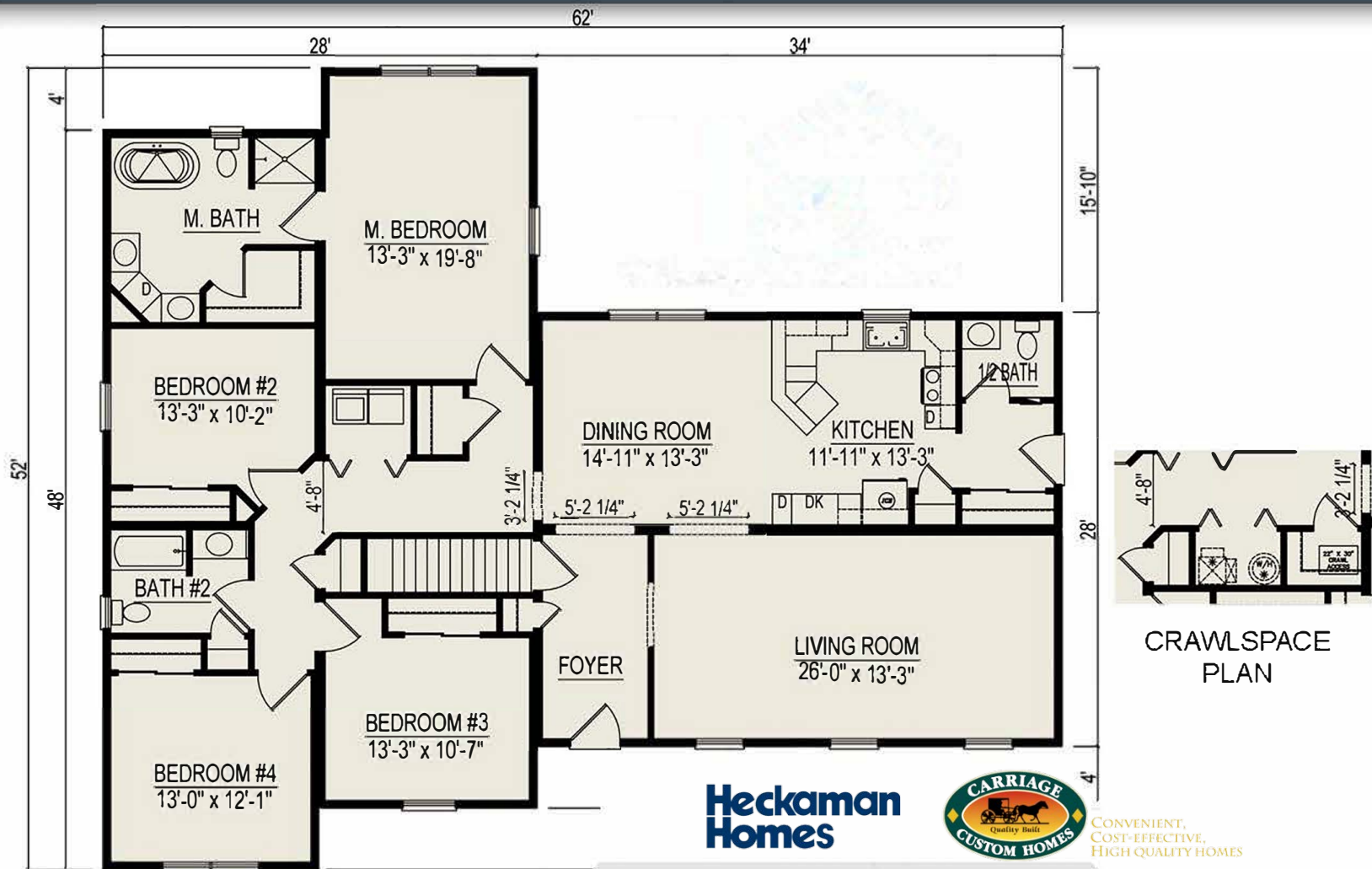
CALL MARTY (231) 463 3900  
350 W. Wexford Ave. (M-37)  
Buckley, MI 49620



# Claremont II

4 Bedrooms, 2 Bathrooms, 2296 Square Feet

Some items shown may be optional or constructed on site



**Heckaman  
Homes**



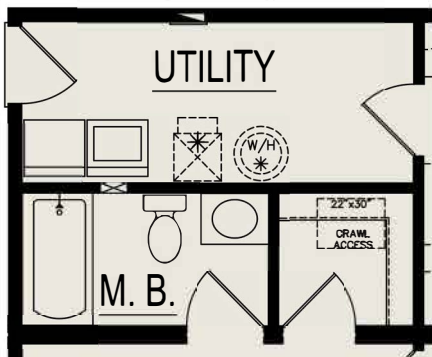
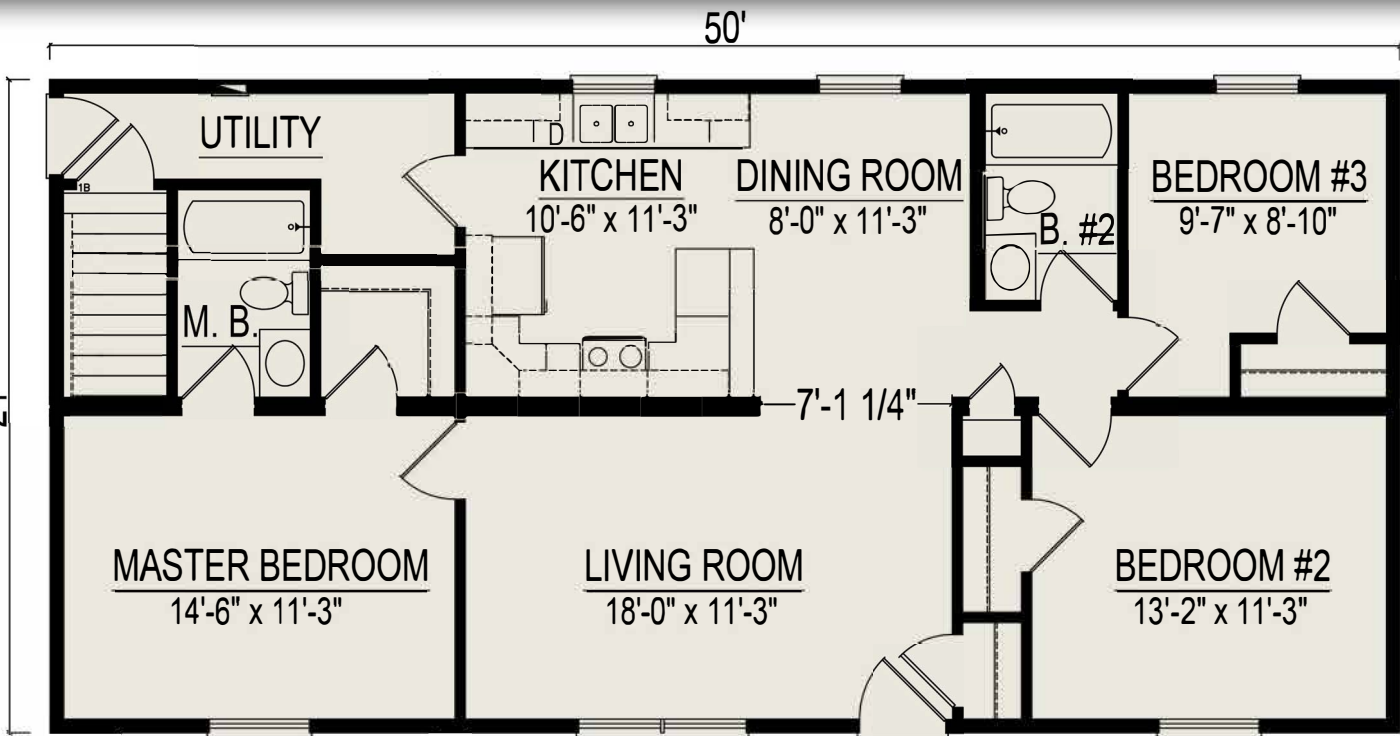
CONVENIENT,  
COST-EFFECTIVE,  
HIGH QUALITY HOMES

CALL MARTY (231) 463 3900  
350 W. Wexford Ave. (M-37)  
Buckley, MI 49620



# Constitution II

3 Bedrooms, 2 Bathrooms, 1200 Square Feet  
Some items shown may be optional or constructed on site



CRAWLSPACE PLAN

**Heckaman  
Homes**



CONVENIENT,  
COST-EFFECTIVE,  
HIGH QUALITY HOMES

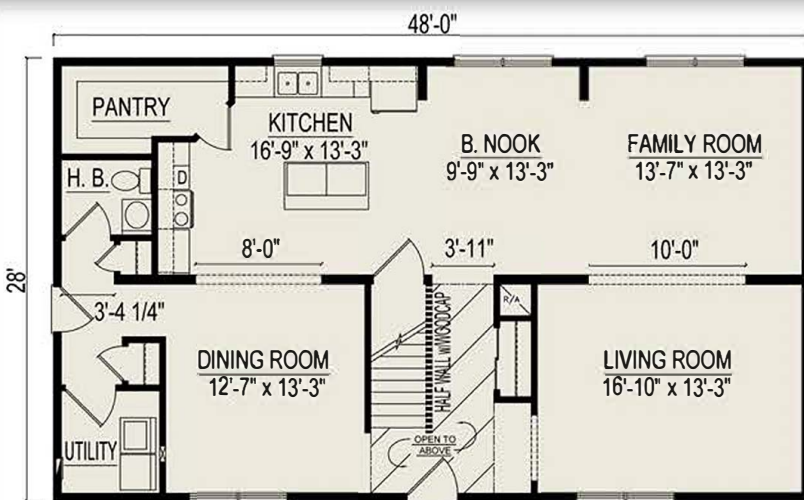
CALL MARTY (231) 463 3900  
350 W. Wexford Ave. (M-37)  
Buckley, MI 49620



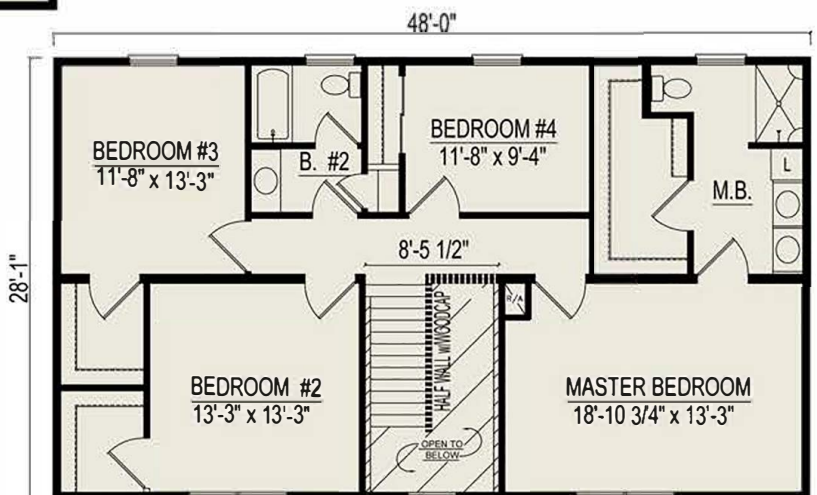
# Coolidge II

4 Bedrooms, 2-1/2 Bathrooms, 2688 Square Feet

Some Items shown may be optional or constructed on site



FIRST FLOOR PLAN



SECOND FLOOR PLAN

**Heckaman  
Homes**



CONVENIENT,  
COST-EFFECTIVE,  
HIGH QUALITY HOMES

CALL MARTY (231) 463 3900  
350 W. Wexford Ave. (M-37)  
Buckley, MI 49620



SQ. FT.	1,680
DIMENSIONS	28 x 60
BEDROOMS	3
BATHS	2

# Countryside



CRAWLSPACE PLAN



BASEMENT PLAN



CONVENIENT,  
COST-EFFECTIVE,  
HIGH QUALITY HOMES

CALL MARTY (231) 463 3900  
350 W. Wexford Ave. (M-37)  
Buckley, MI 49620

*Renderings are artists interpretations only. Illustrations may show garages, porches and other options that are not standard in the basic floor plan or are added on-site by builder.*



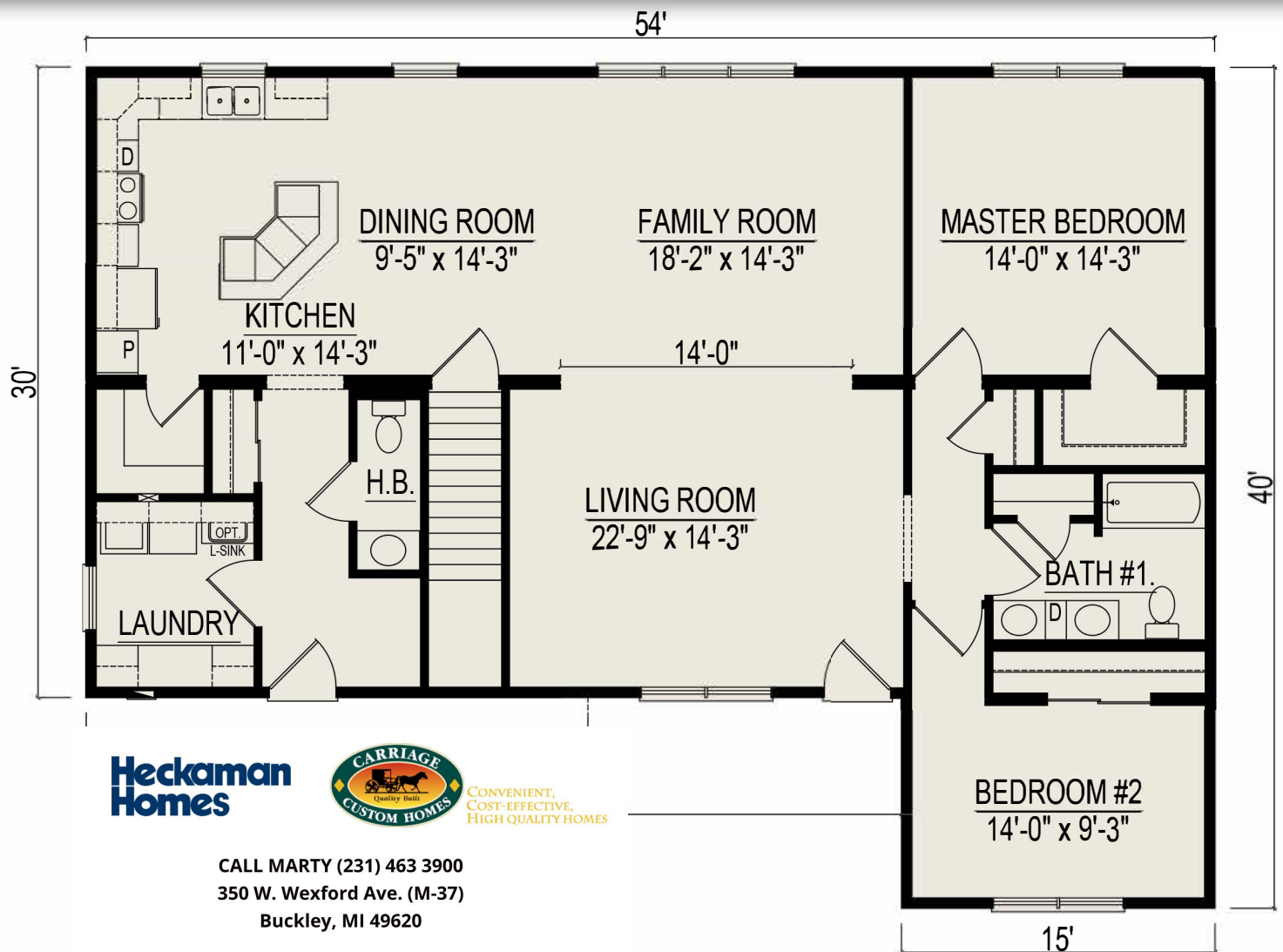




# Craftsman II Ranch

2 Bedrooms, 1-1/2 Bathrooms, 1770 Square Feet

Some items shown may be optional or constructed on site



**Heckaman  
Homes**



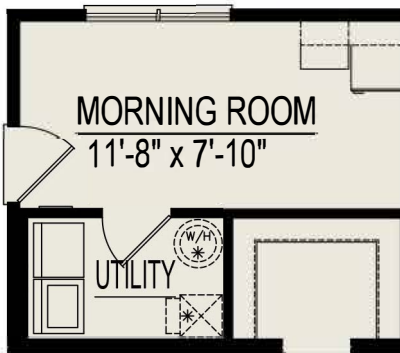
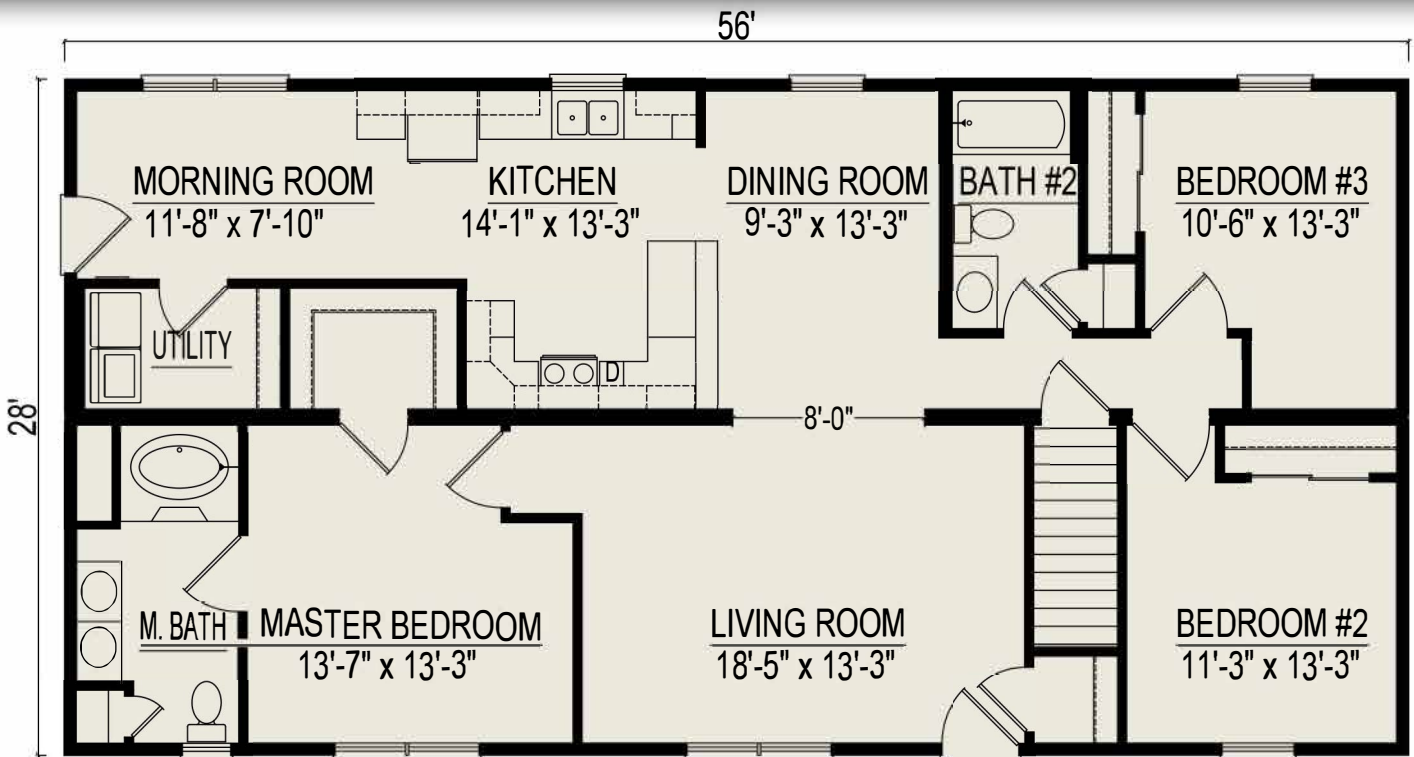
CONVENIENT,  
COST-EFFECTIVE,  
HIGH QUALITY HOMES

CALL MARTY (231) 463 3900  
350 W. Wexford Ave. (M-37)  
Buckley, MI 49620



# Crestridge II

3 Bedrooms, 2 Bathrooms, 1568 Square Feet  
 Some items shown may be optional or constructed on site



CRAWLSPACE PLAN

**Heckaman  
Homes**



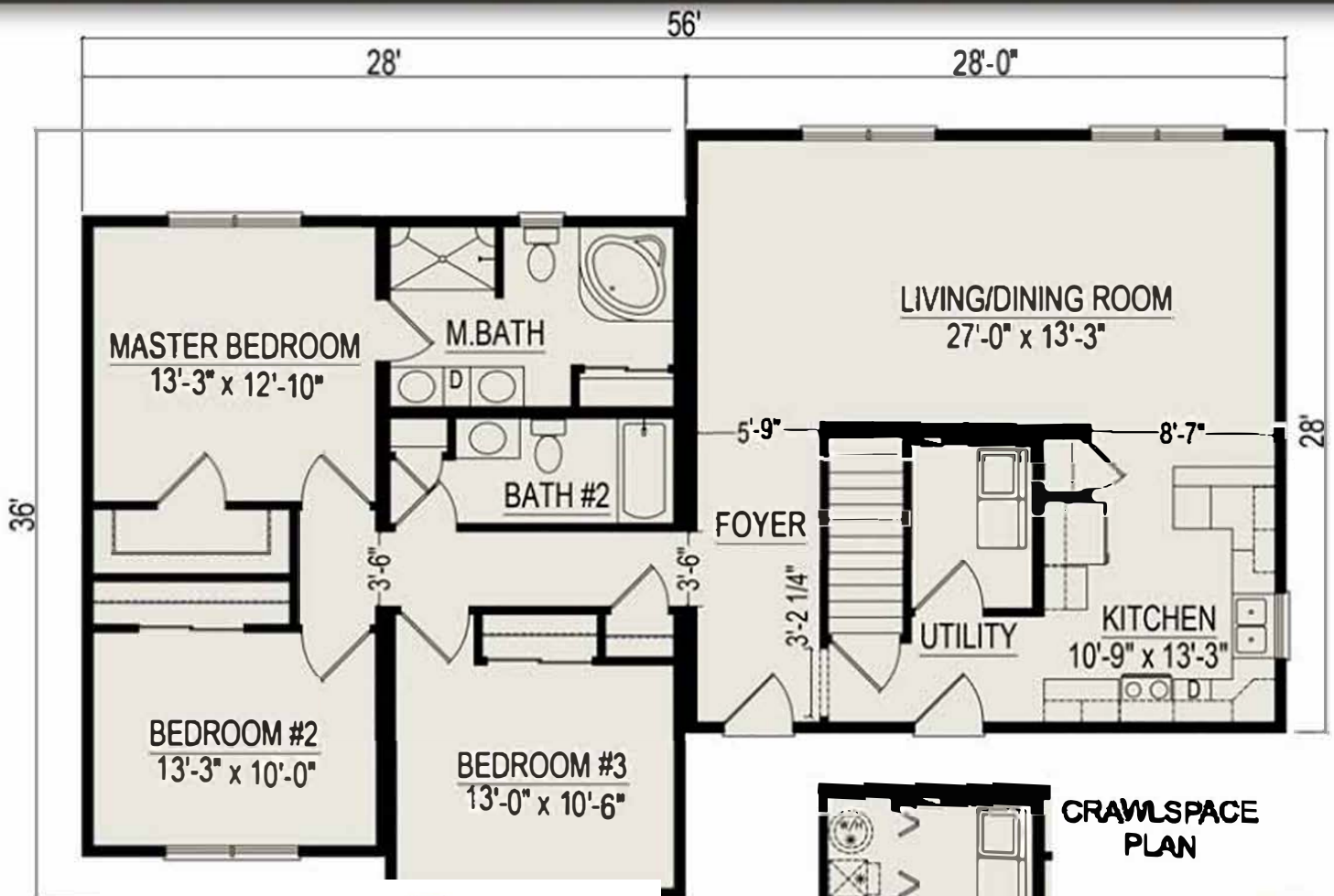
CONVENIENT,  
 COST-EFFECTIVE,  
 HIGH QUALITY HOMES

CALL MARTY (231) 463 3900  
 350 W. Wexford Ave. (M-37)  
 Buckley, MI 49620



# Danbury III

3 Bedrooms, 2 Bathrooms, 1652 Square Feet  
 Some items shown may be optional or constructed on site



CONVENIENT,  
 COST-EFFECTIVE,  
 HIGH QUALITY HOMES

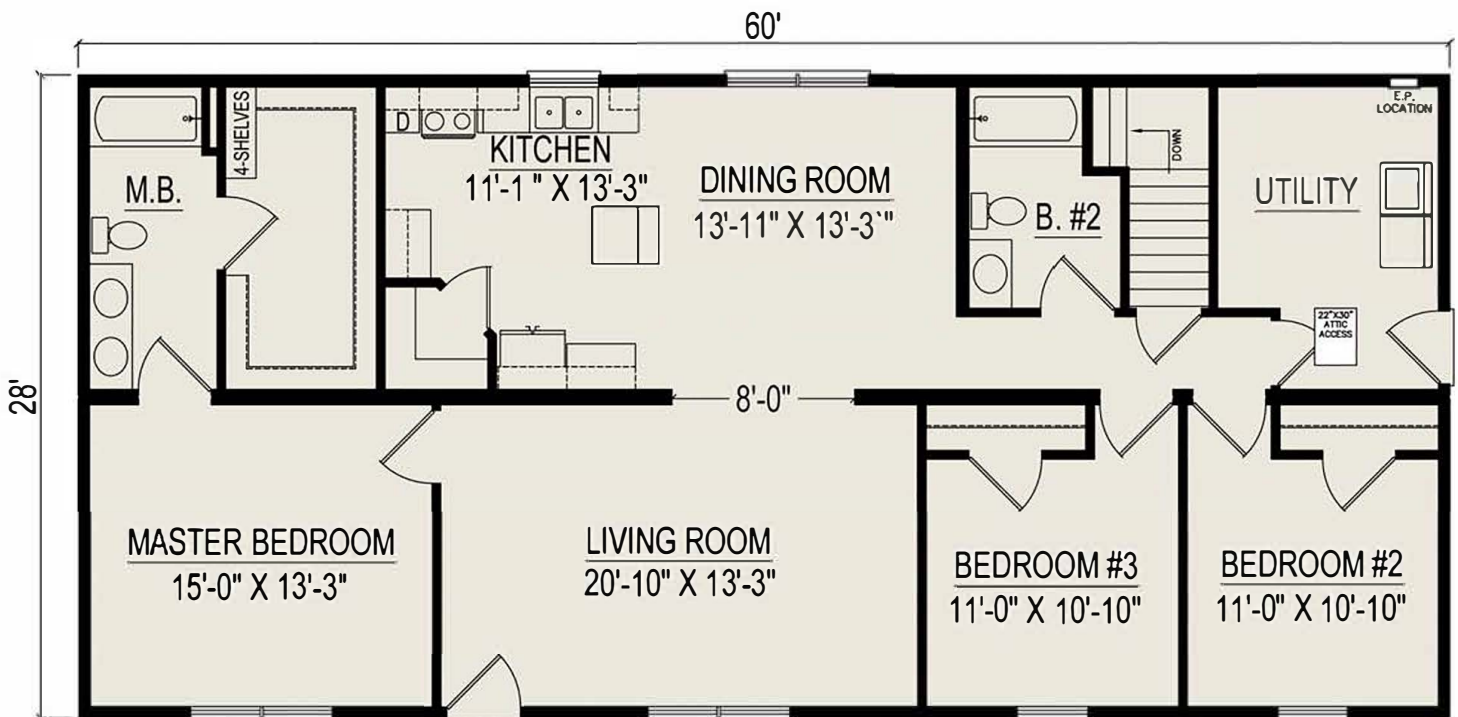
CALL MARTY (231) 463 3900  
 350 W. Wexford Ave. (M-37)  
 Buckley, MI 49620



# Davenport II

3 Bedrooms, 2 Bathrooms, 1680 Square Feet

Some Items shown may be optional or constructed on site



**Heckaman  
Homes**



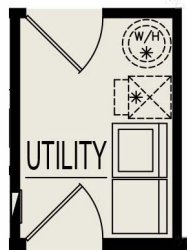
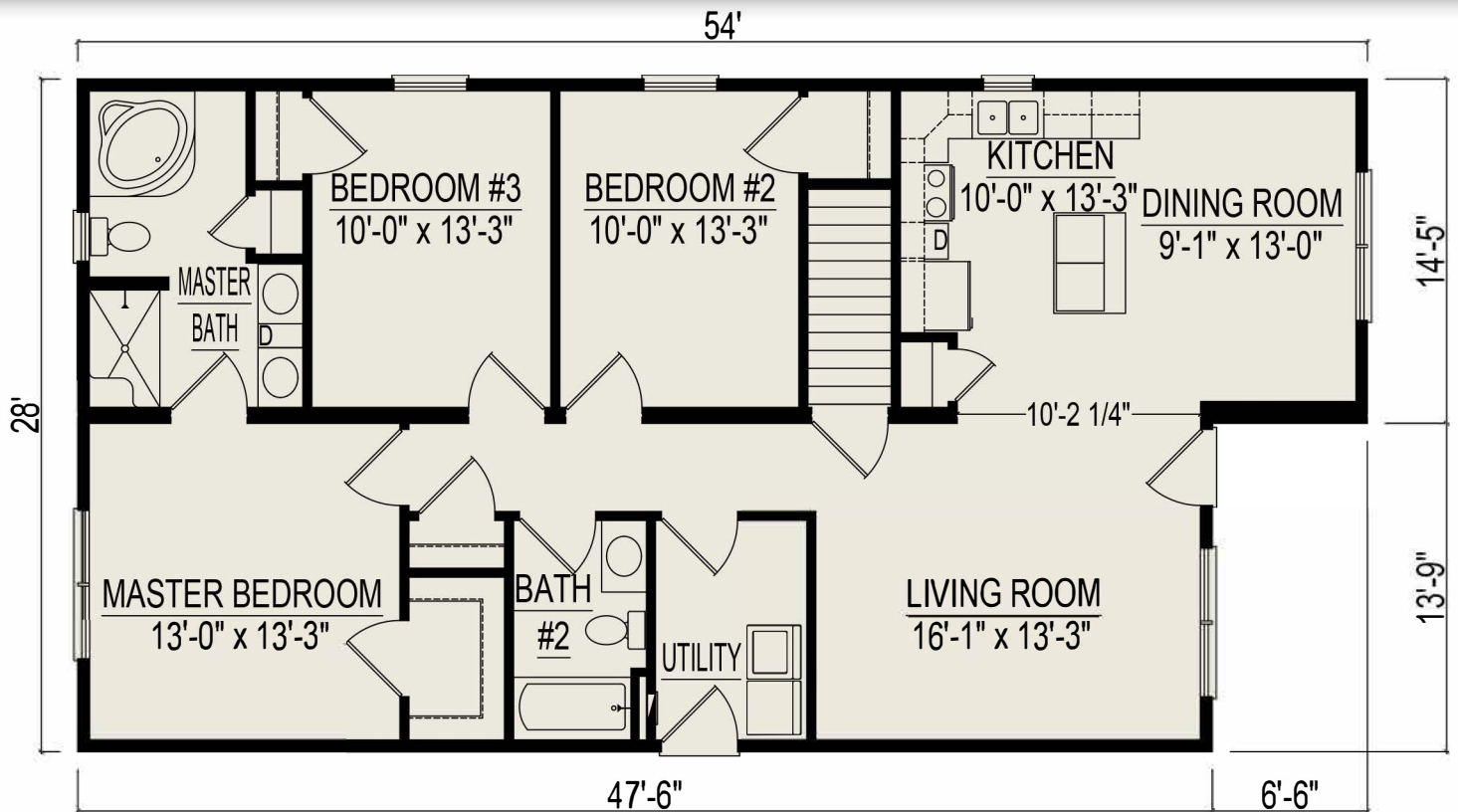
CONVENIENT,  
COST-EFFECTIVE,  
HIGH QUALITY HOMES

CALL MARTY (231) 463 3900  
350 W. Wexford Ave. (M-37)  
Buckley, MI 49620



# Delaware III

3 Bedrooms, 2 Bathrooms, 1421 Square Feet  
 Some items shown may be optional or constructed on site



**CRAWLSPACE PLAN**  
**DINING ROOM**  
 12'-11" X 13'-0"



CONVENIENT,  
 COST-EFFECTIVE,  
 HIGH QUALITY HOMES

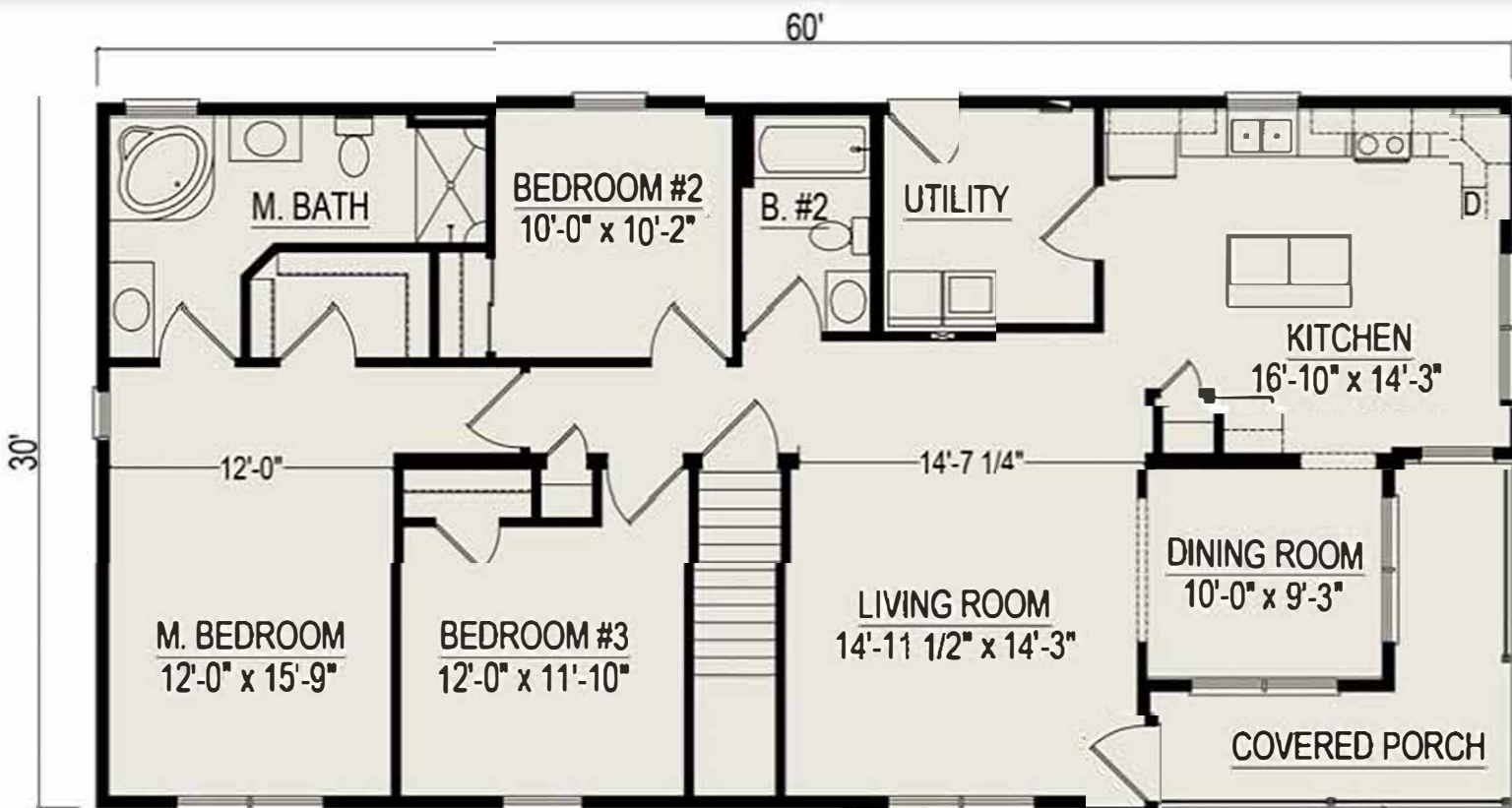
CALL MARTY (231) 463 3900  
 350 W. Wexford Ave. (M-37)  
 Buckley, MI 49620



# Georgia II

3 Bedrooms, 2 Bathrooms, 1800 Square Feet

Some items shown may be optional or constructed on site



**Heckaman  
Homes**



CONVENIENT,  
COST-EFFECTIVE,  
HIGH QUALITY HOMES

CALL MARTY (231) 463 3900  
350 W. Wexford Ave. (M-37)  
Buckley, MI 49620

## CRAWLSPACE PLAN

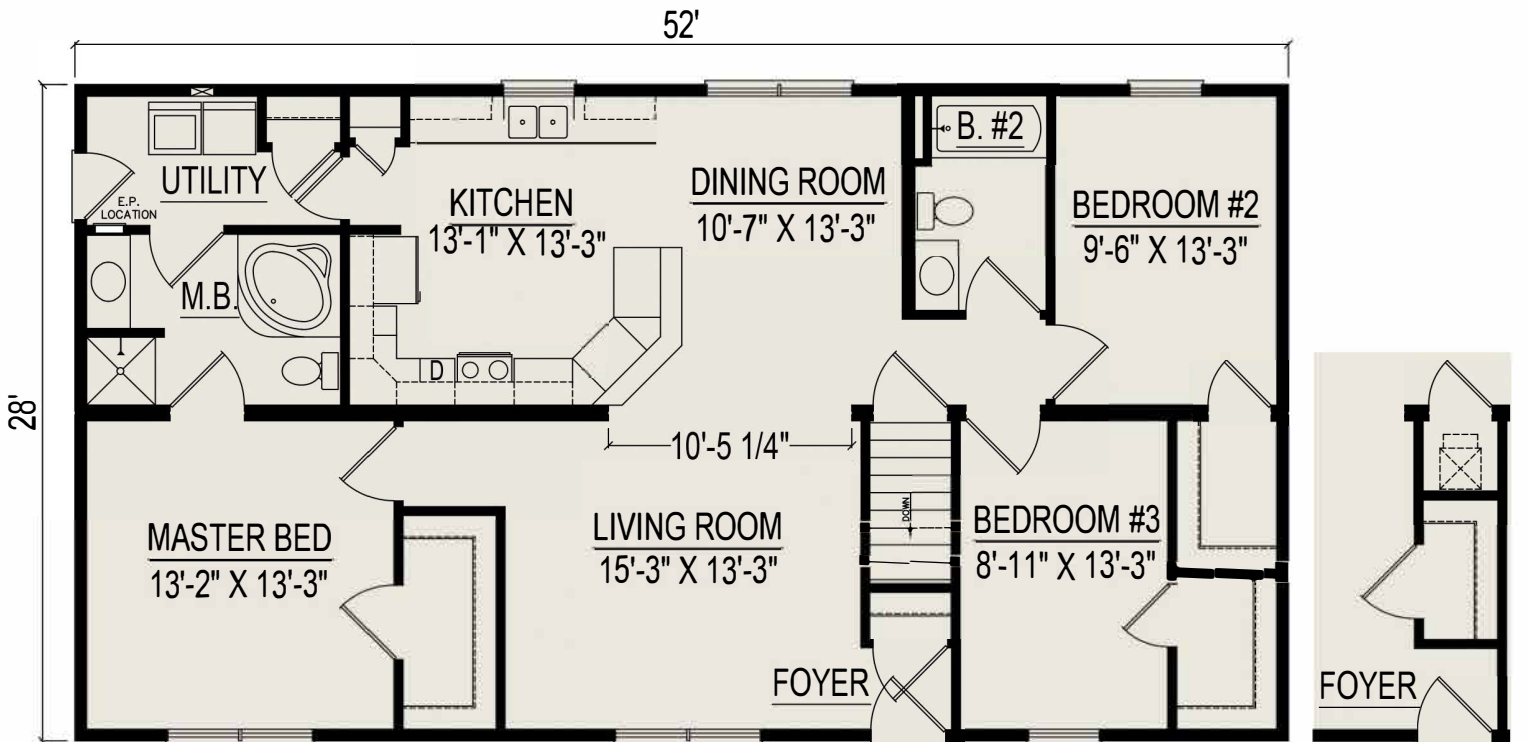




# Glendale II

3 Bedrooms, 2 Bathrooms, 1456 Square Feet

Some Items shown may be optional or constructed on site



CRAWLSPACE PLAN



CONVENIENT,  
COST-EFFECTIVE,  
HIGH QUALITY HOMES

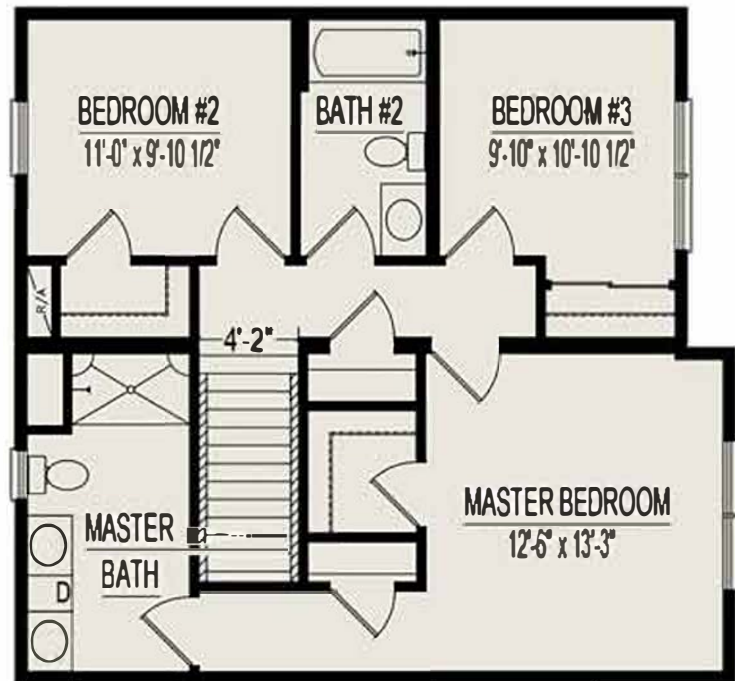
CALL MARTY (231) 463 3900  
350 W. Wexford Ave. (M-37)  
Buckley, MI 49620



# Hamilton II

3 Bedrooms, 2-1/2 Bathrooms, 1624 Square Feet

Some items shown may be optional or constructed on site



**Heckaman  
Homes**



CONVENIENT,  
COST-EFFECTIVE,  
HIGH QUALITY HOMES

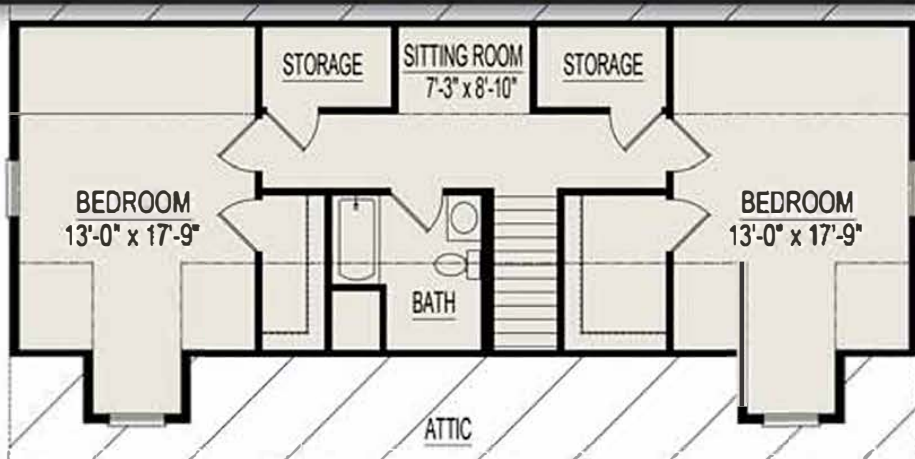
CALL MARTY (231) 463 3900  
350 W. Wexford Ave. (M-37)  
Buckley, MI 49620





# Hanover

**1 Bedroom, 1-1/2 Bathrooms, 1530 Square Feet**  
**867 Square Feet for Proposed 2nd Floor**  
*Some items shown may be optional or constructed on site*



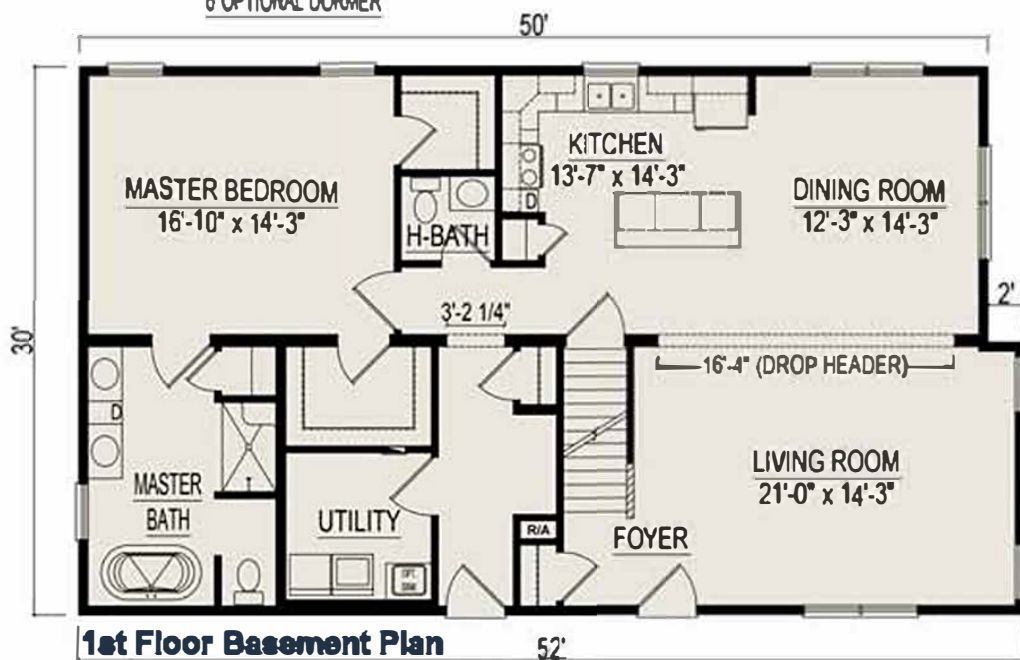
**Heckaman  
Homes**



CONVENIENT,  
COST-EFFECTIVE,  
HIGH QUALITY HOMES

CALL MARTY (231) 463 3900  
 350 W. Wexford Ave. (M-37)  
 Buckley, MI 49620

**Proposed 2nd Floor Plan**  
**(Finished on site by others)**



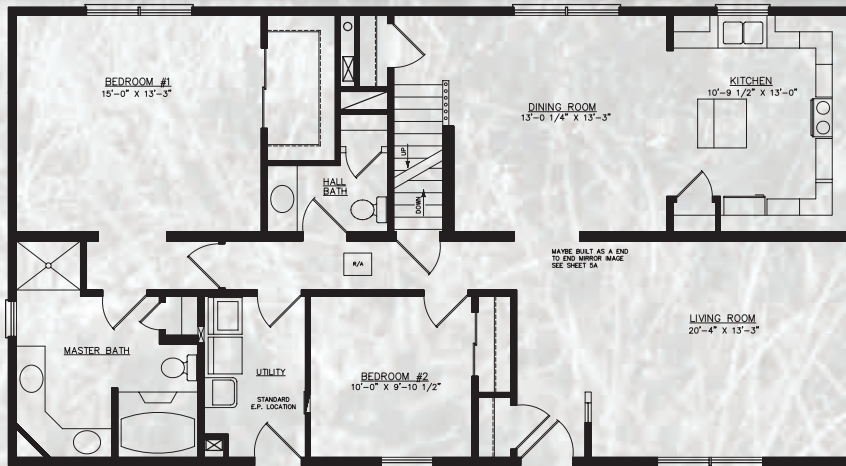
**1st Floor Basement Plan**



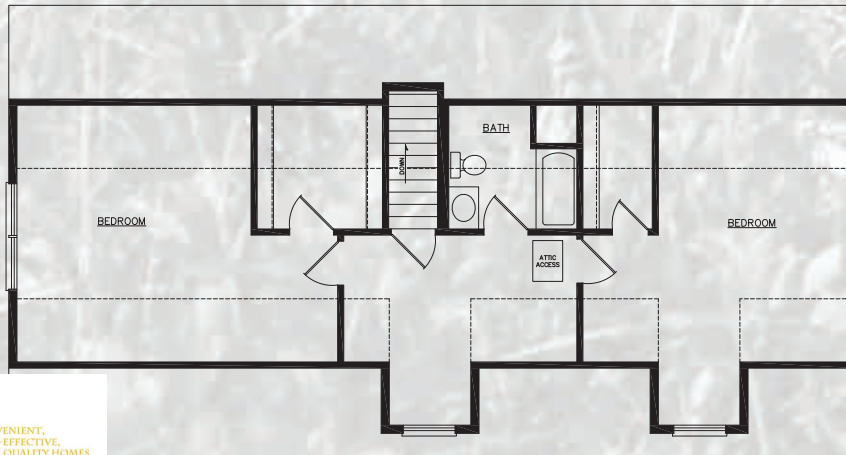
# Hartford

1ST FL. SQ. FT.	1,456
2ND FL. SQ. FT.	867
DIMENSIONS	28 x 52
BEDROOMS	2
BATHS	1 1/2

1ST FLOOR  
BASEMENT PLAN



PROPOSED 2ND FLOOR  
(FINISHED ON SITE BY OTHERS)



CONVENIENT,  
COST-EFFECTIVE,  
HIGH-QUALITY HOMES

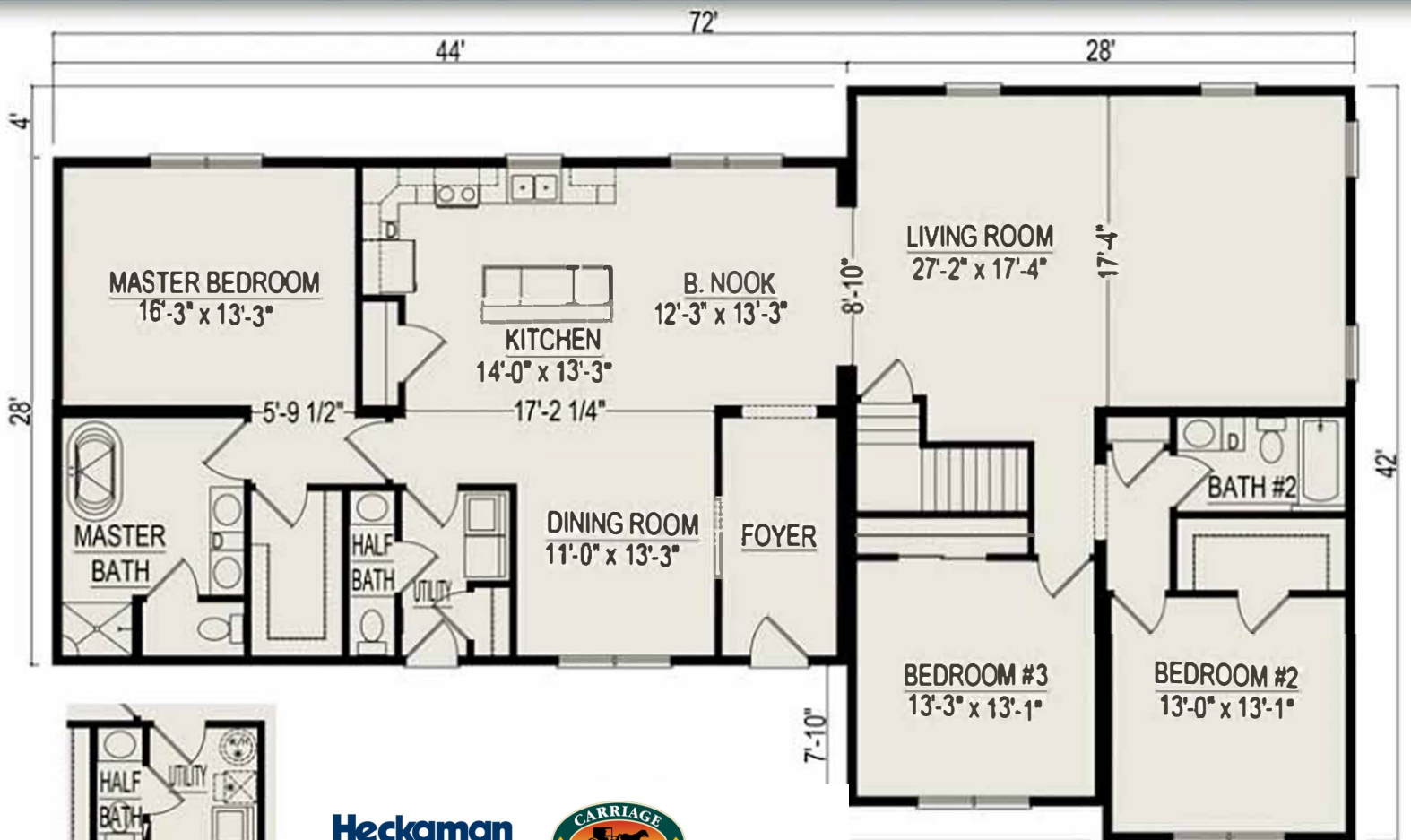
CALL MARTY (231) 463 3900  
350 W. Wexford Ave. (M-37)  
Buckley, MI 49620



# Hawthorn II

3 Bedrooms, 2-1/2 Bathrooms, 2380 Square Feet

Some items shown may be optional or constructed on site



**CRAWLSPACE PLAN**

**Heckaman Homes**



CONVENIENT,  
COST-EFFECTIVE,  
HIGH QUALITY HOMES

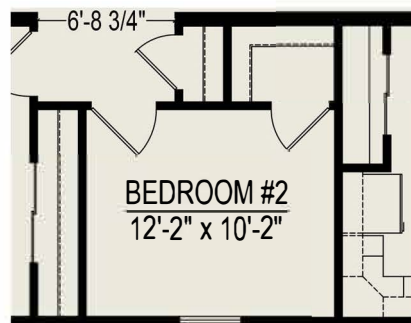
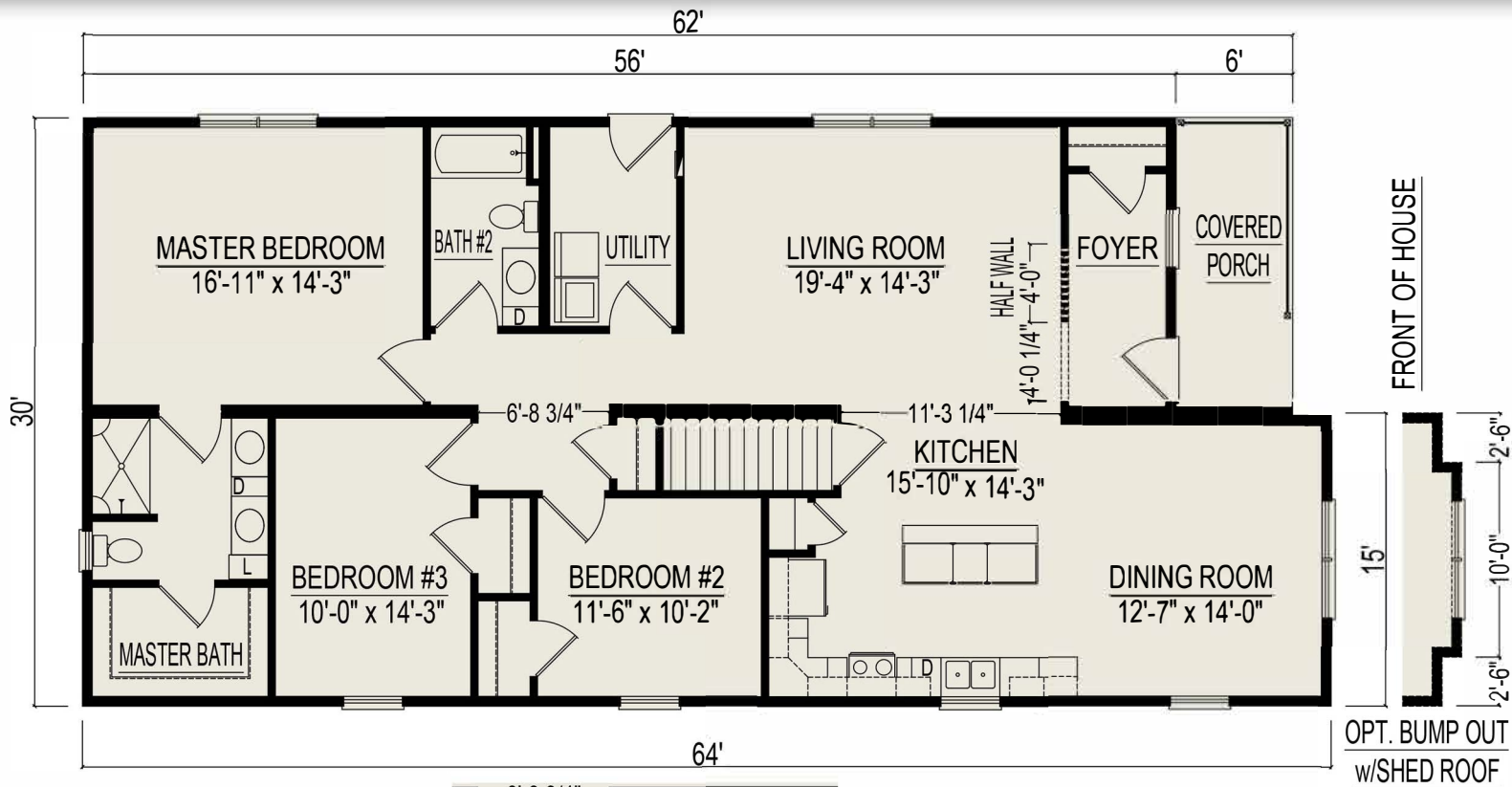
CALL MARTY (231) 463 3900  
350 W. Wexford Ave. (M-37)  
Buckley, MI 49620



# Hudson

3 Bedrooms, 2 Bathrooms, Porch 1890 Square Feet

Some Items shown may be optional or constructed on site



**Heckaman  
Homes**



CONVENIENT,  
COST-EFFECTIVE,  
HIGH QUALITY HOMES

CALL MARTY (231) 463 3900  
350 W. Wexford Ave. (M-37)  
Buckley, MI 49620

**CRAWLSPACE  
PLAN**

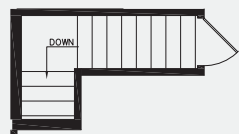


# Illinois

SQ. FT.	1,800
DIMENSIONS	30 x 60
BEDROOMS	3
BATHS	2



CRAWLSPACE PLAN



BASEMENT PLAN



CONVENIENT,  
COST-EFFECTIVE,  
HIGH QUALITY HOMES

CALL MARTY (231) 463 3900  
350 W. Wexford Ave. (M-37)  
Buckley, MI 49620



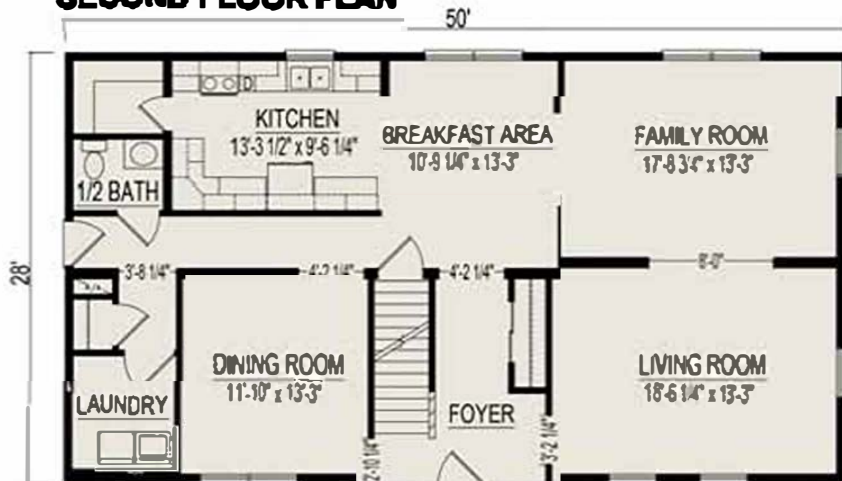
# Jefferson IV

4 Bedrooms, 2-1/2 Bathrooms, 2800 Square Feet

Some items shown may be optional or constructed on site



**SECOND FLOOR PLAN**



**FIRST FLOOR PLAN**

**Heckaman  
Homes**



CONVENIENT,  
COST-EFFECTIVE,  
HIGH QUALITY HOMES

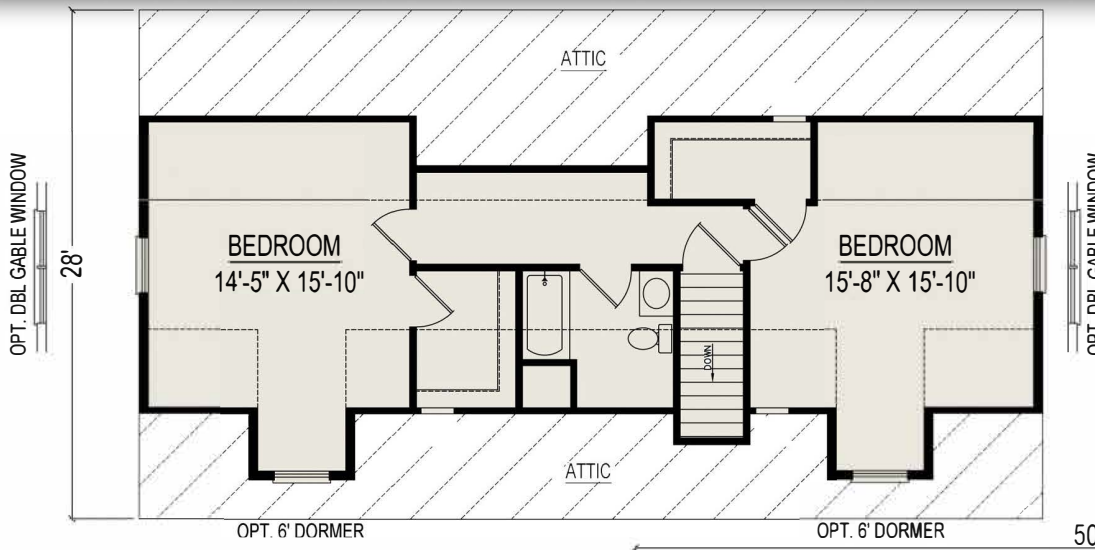
CALL MARTY (231) 463 3900  
350 W. Wexford Ave. (M-37)  
Buckley, MI 49620



# Lakeside II

2 Bedrooms, 2 Bathrooms, 1400 Square Feet  
836 Square Feet for Proposed 2nd Floor

Some Items shown may be optional or constructed on site

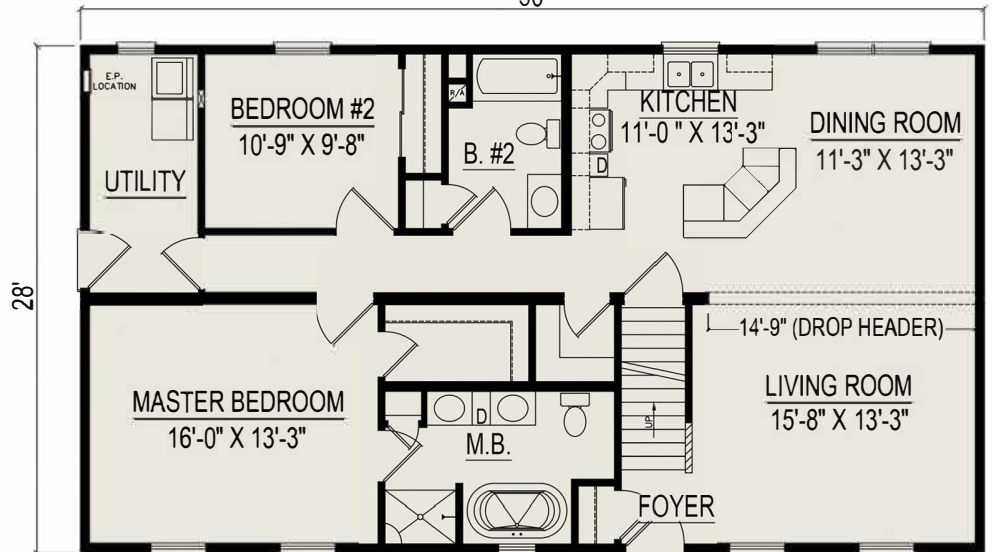


**Proposed 2nd Floor Plan**  
(Finished on site by others)

**Heckaman  
Homes**



CALL MARTY (231) 463 3900  
350 W. Wexford Ave. (M-37)  
Buckley, MI 49620



**1st Floor Basement Plan**

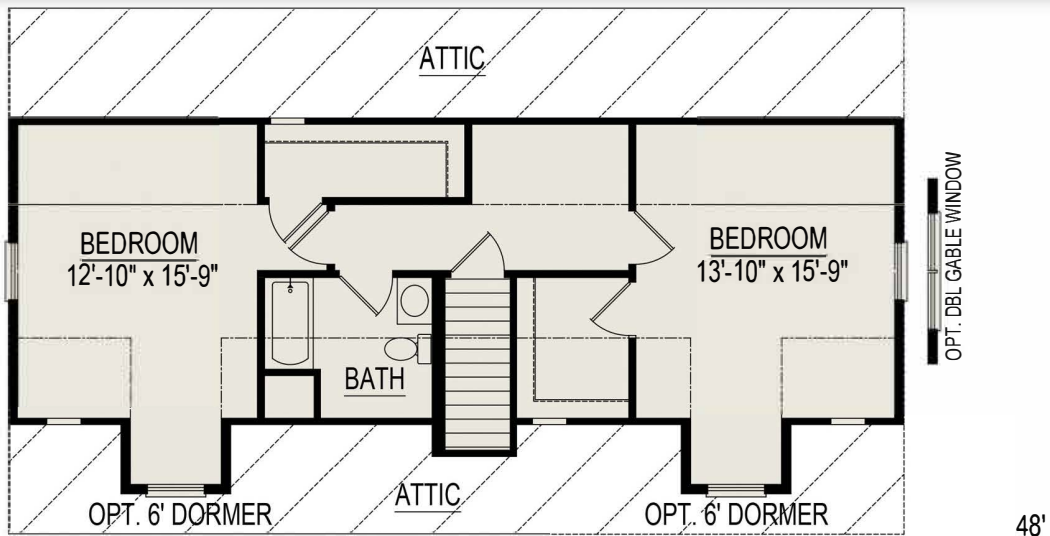
Revised 5/16/2023



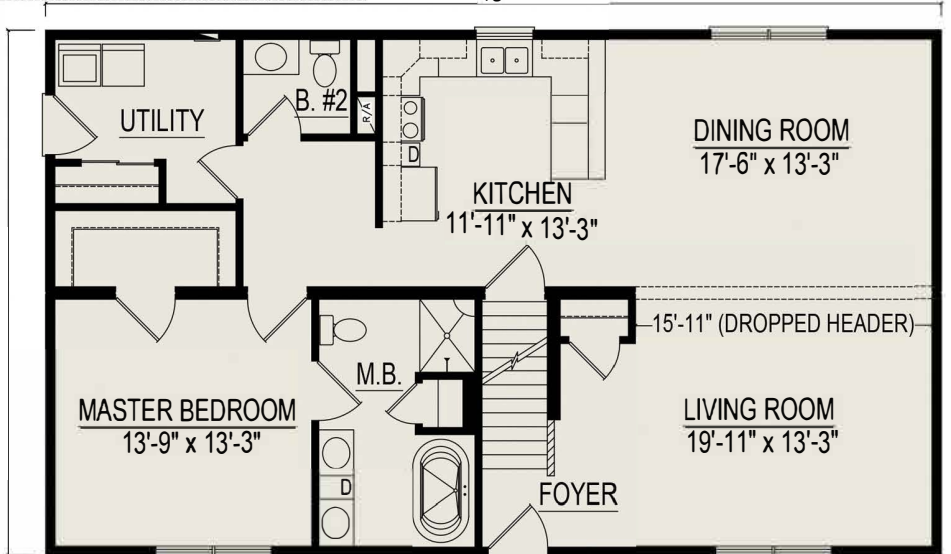
# Lakeview III 48ft.

1 Bedroom, 1-1/2 Bathrooms, 1344 Square Feet  
804 Square Feet for Proposed 2nd Floor

Some Items shown may be optional or constructed on site



**Proposed 2nd Floor Plan**  
(Finished on site by others)



**1st Floor Basement Plan**

**Heckaman  
Homes**



CONVENIENT,  
COST-EFFECTIVE,  
HIGH QUALITY HOMES

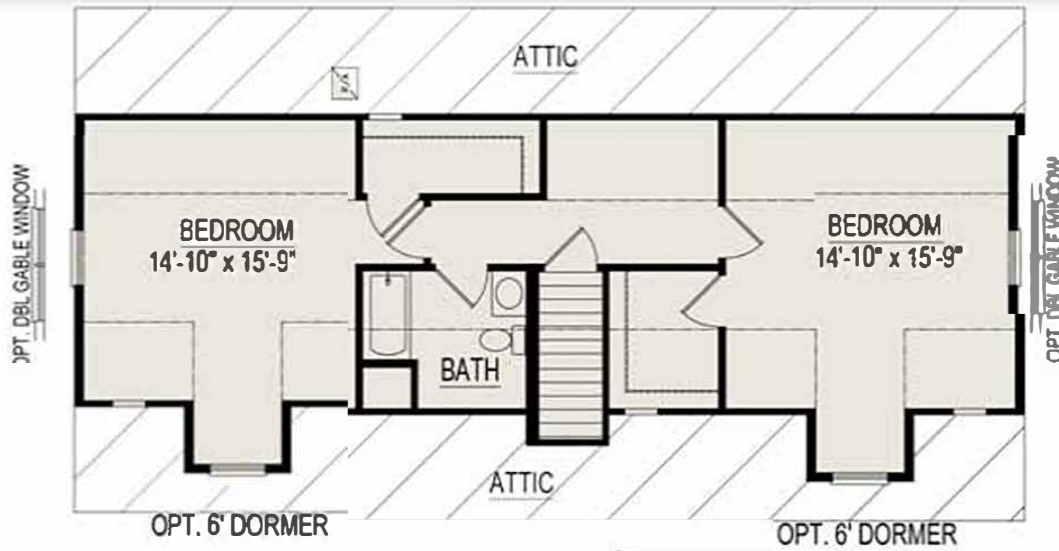
CALL MARTY (231) 463 3900  
350 W. Wexford Ave. (M-37)  
Buckley, MI 49620





# Lakeview III 52ft.

1 Bedroom, 1-1/2 Bathrooms, 1456 Square Feet  
 867 Square Feet for Proposed 2nd Floor  
*Some items shown may be optional or constructed on site*



**Proposed 2nd Floor Plan**  
 (Finished on site by others)

**Heckaman Homes**

CONVENIENT,  
 COST-EFFECTIVE,  
 HIGH QUALITY HOMES

CALL MARTY (231) 463 3900  
 350 W. Wexford Ave. (M-37)  
 Buckley, MI 49620



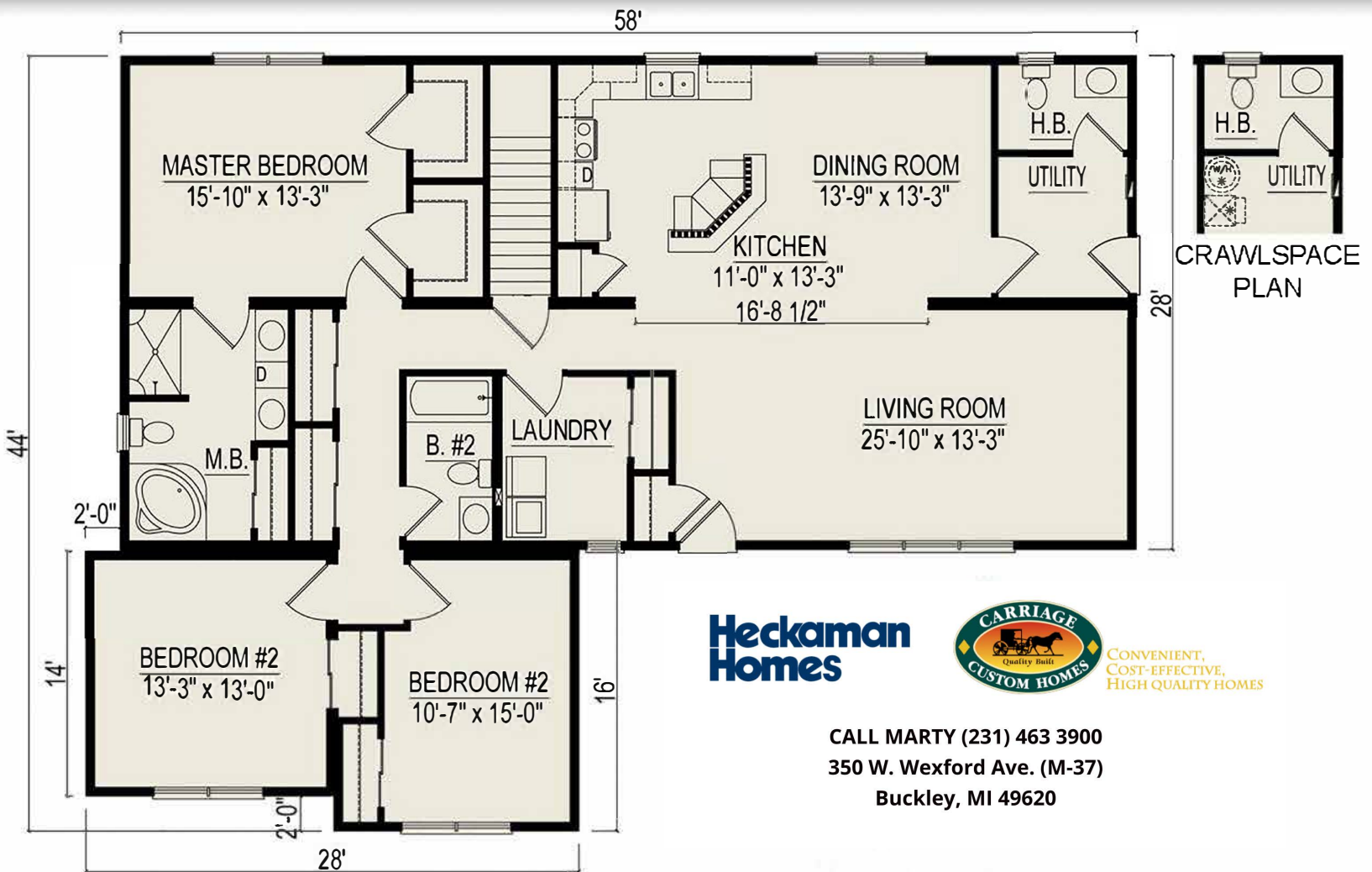
**1st Floor Basement Plan**



# Lancaster II

3 Bedrooms, 2-1/2 Bathrooms, 2044 Square Feet

Some items shown may be optional or constructed on site



**Heckaman  
Homes**



CONVENIENT,  
COST-EFFECTIVE,  
HIGH QUALITY HOMES

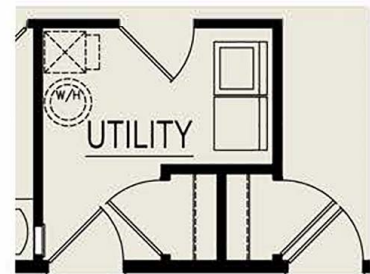
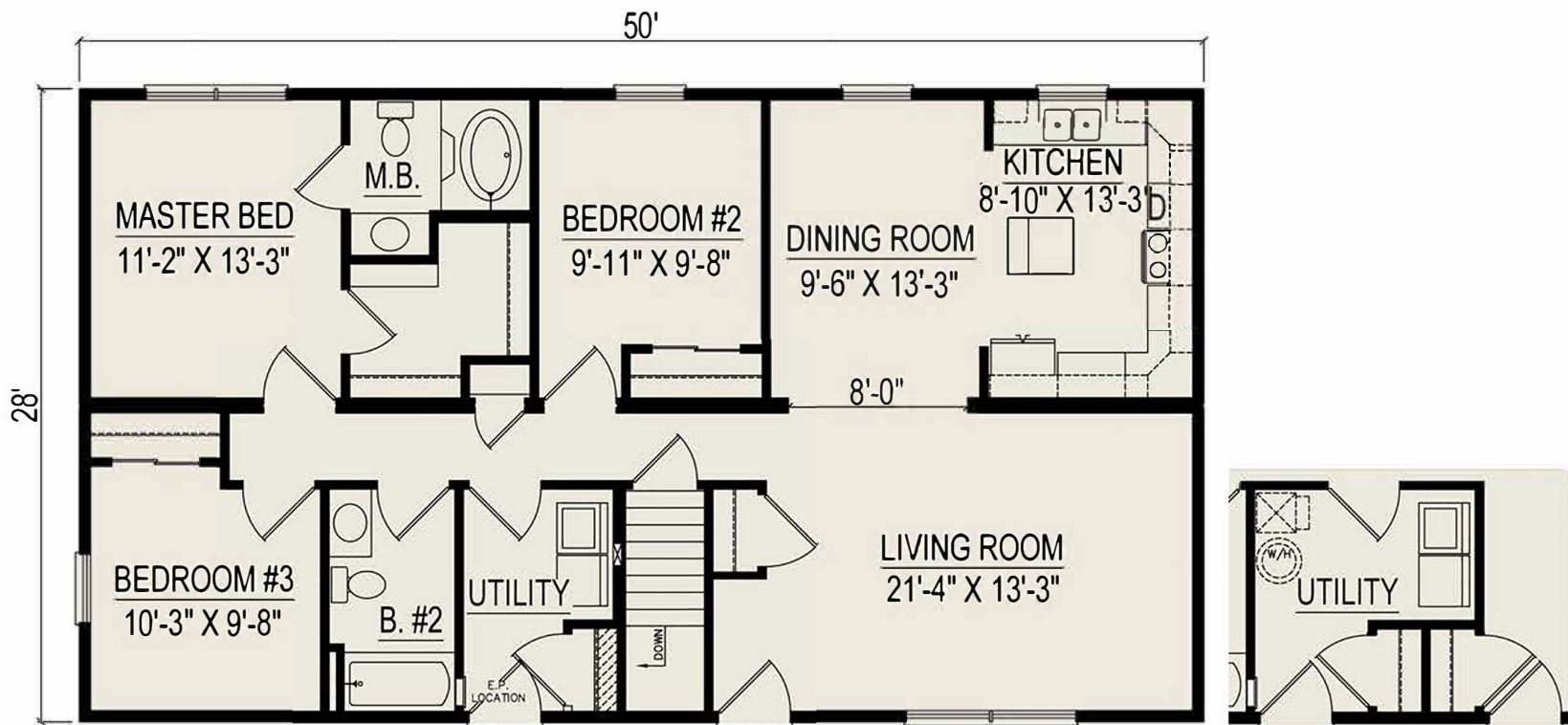
CALL MARTY (231) 463 3900  
350 W. Wexford Ave. (M-37)  
Buckley, MI 49620



# Lexington II

3 Bedrooms, 2 Bathrooms, 1400 Square Feet

Some items shown may be optional or constructed on site



CRAWLSPACE PLAN

**Heckaman  
Homes**



CONVENIENT,  
COST-EFFECTIVE,  
HIGH QUALITY HOMES

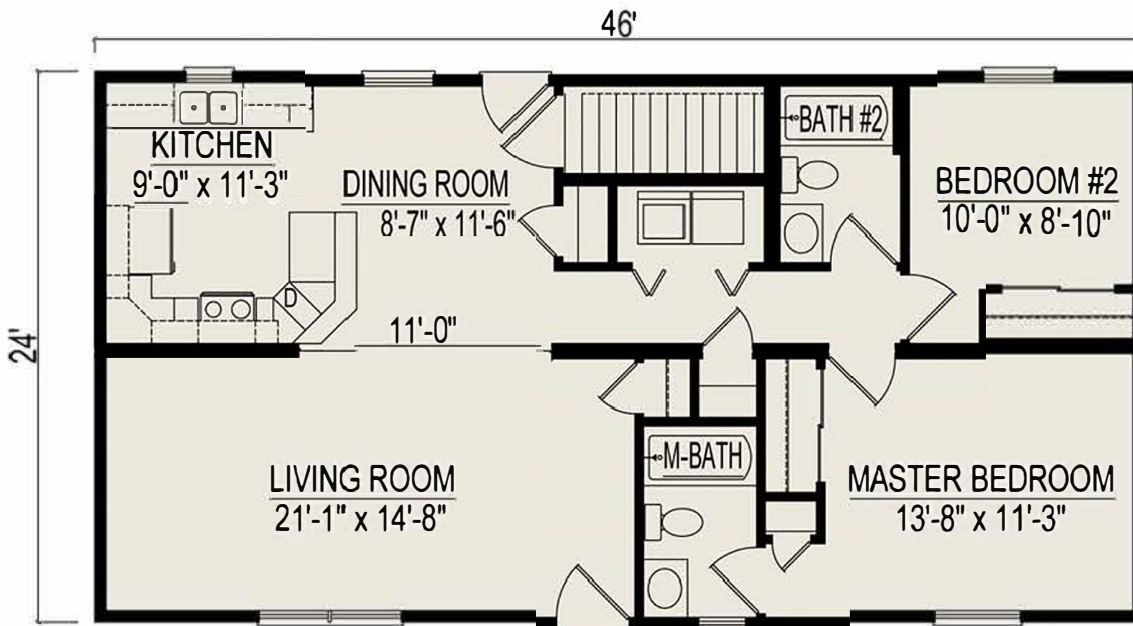
CALL MARTY (231) 463 3900  
350 W. Wexford Ave. (M-37)  
Buckley, MI 49620



# Liberty II

2 Bedrooms, 2 Bathrooms, 1104 Square Feet

Some items shown may be optional or constructed on site



**CRAWLSPACE PLAN**

**Heckaman  
Homes**



CONVENIENT,  
COST-EFFECTIVE,  
HIGH QUALITY HOMES

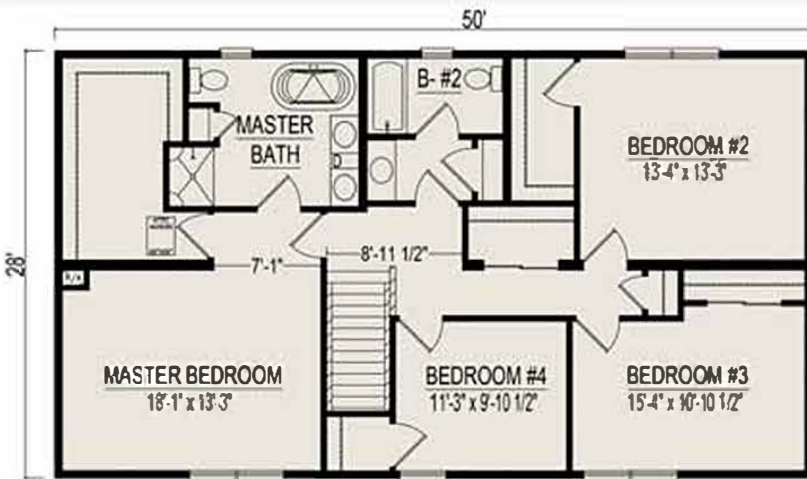
CALL MARTY (231) 463 3900  
350 W. Wexford Ave. (M-37)  
Buckley, MI 49620



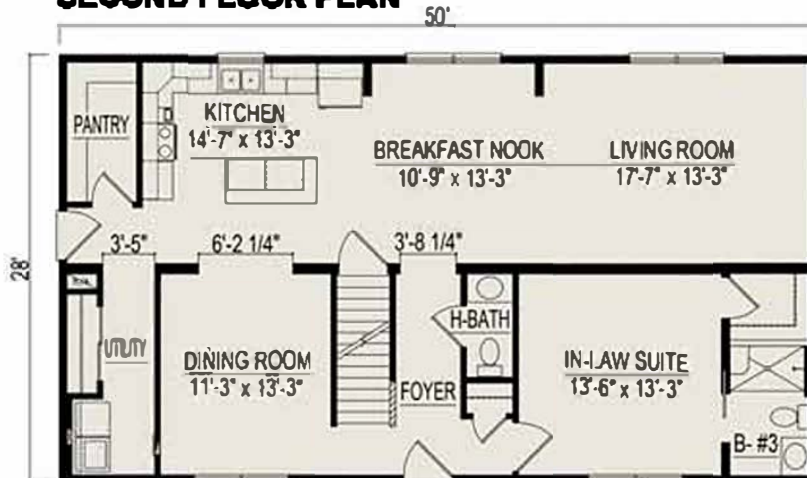
# Lincoln

5 Bedrooms, 3-1/2 Bathrooms, 2800 Square Feet

*Some items shown may be optional or constructed on site*



**SECOND FLOOR PLAN**



**FIRST FLOOR PLAN**

**Heckaman  
Homes**



CONVENIENT,  
COST-EFFECTIVE,  
HIGH QUALITY HOMES

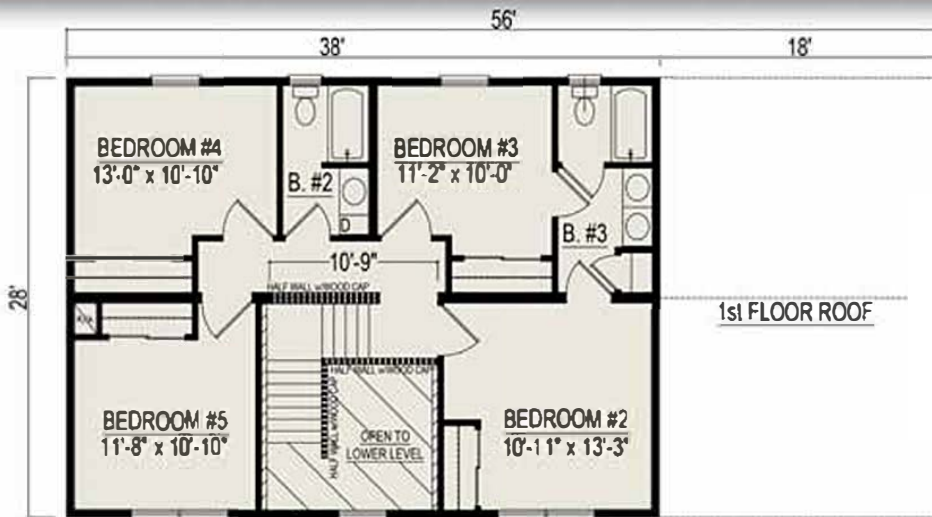
CALL MARTY (231) 463 3900  
350 W. Wexford Ave. (M-37)  
Buckley, MI 49620



# Madison III

5 Bedrooms, 3-1/2 Bathrooms, 2632 Square Feet

Some items shown may be optional or constructed on site



**SECOND FLOOR PLAN**

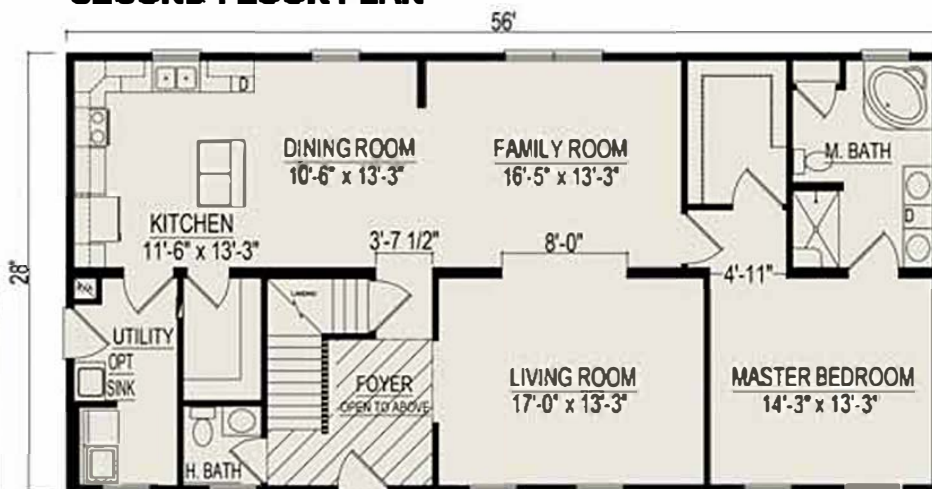
**Heckaman  
Homes**



CONVENIENT,  
COST-EFFECTIVE,  
HIGH QUALITY HOMES

CALL MARTY (231) 463 3900  
350 W. Wexford Ave. (M-37)  
Buckley, MI 49620

**CRAWL  
SPACE  
PLAN**



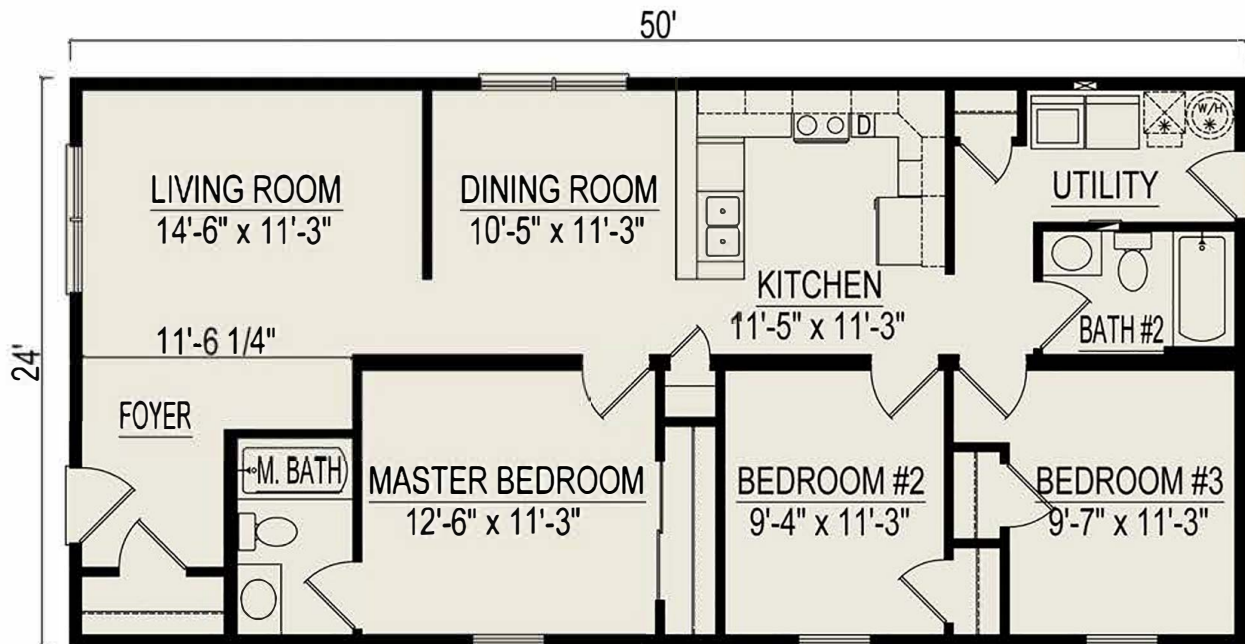
**FIRST FLOOR PLAN**



# Manhattan II

3 Bedrooms, 2 Bathrooms, 1200 Square Feet

Some items shown may be optional or constructed on site



**Heckaman  
Homes**



CONVENIENT,  
COST-EFFECTIVE,  
HIGH QUALITY HOMES

CALL MARTY (231) 463 3900  
350 W. Wexford Ave. (M-37)  
Buckley, MI 49620



# Mayberry

3 Bedrooms, 2 Bathrooms, Den 1920 Square Feet

Some Items shown may be optional or constructed on site

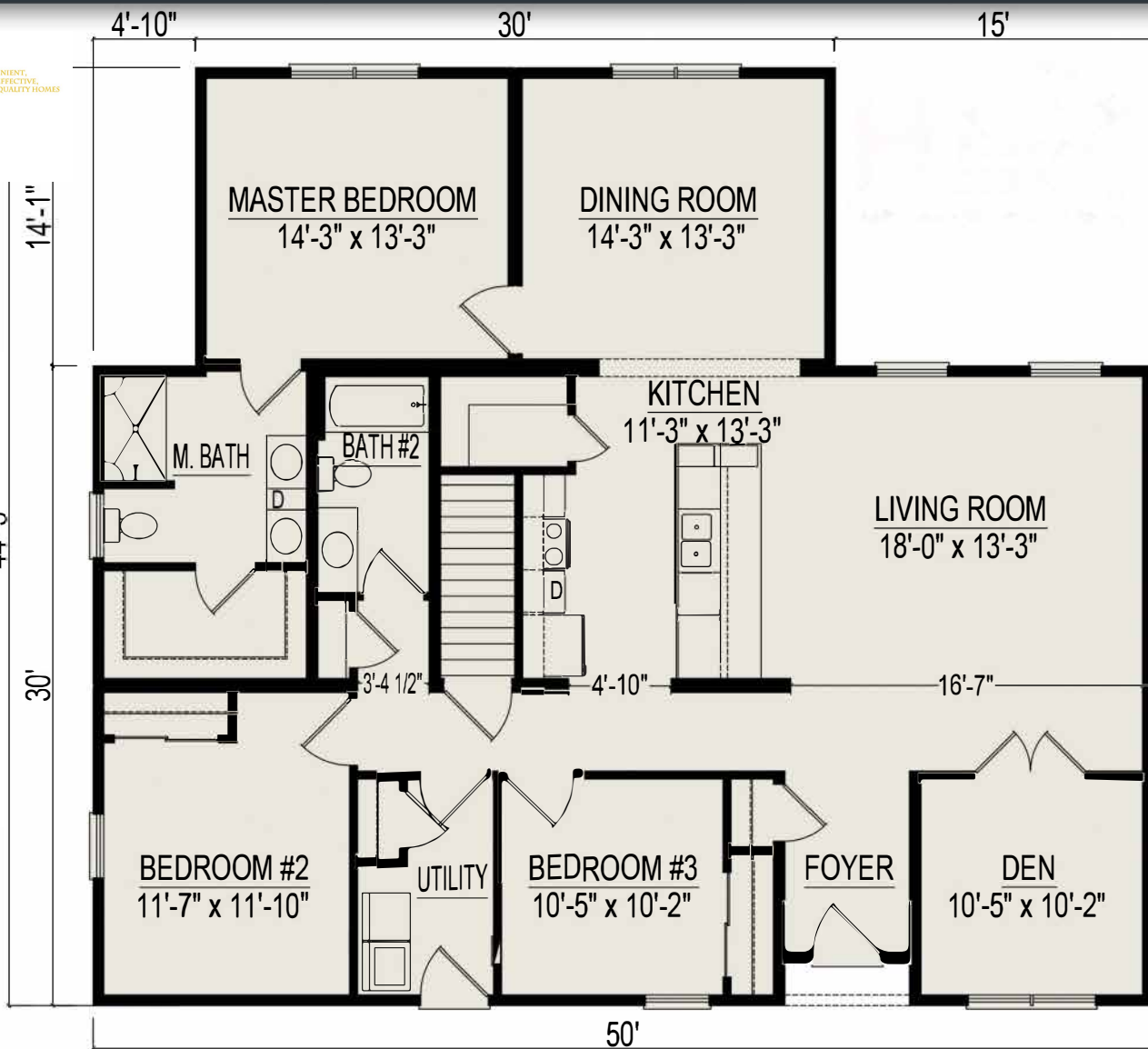
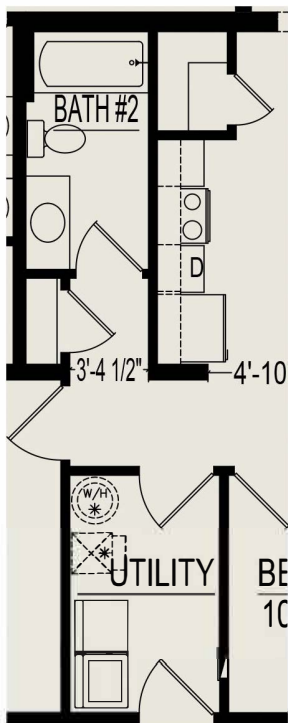
**Heckaman  
Homes**



CONVENIENT,  
COST-EFFECTIVE,  
HIGH-QUALITY HOMES

CALL MARTY (231) 463 3900  
350 W. Wexford Ave. (M-37)  
Buckley, MI 49620

## CRAWLSPACE PLAN







# McKinley II

3 Bedrooms, Bonus, 2-1/2 Bathrooms, 2036 Square Feet  
 (1746 Square Feet Finished plus 278 Square Feet Unfinished Bonus Room)

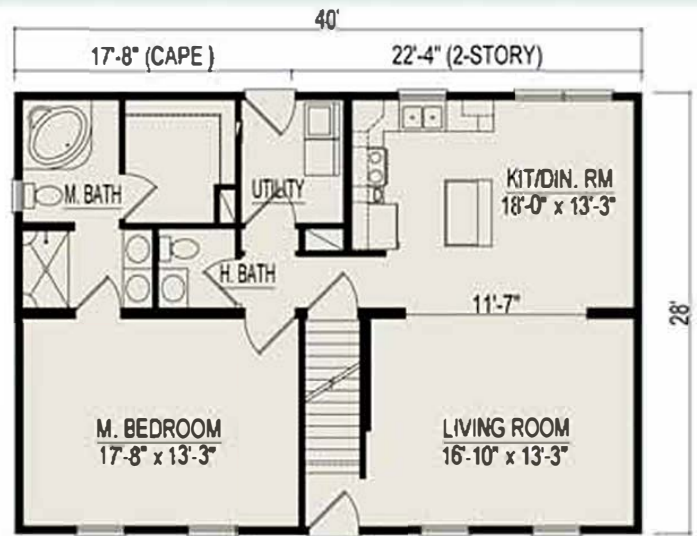
*Some items shown may be optional or constructed on site*

**Heckaman  
Homes**

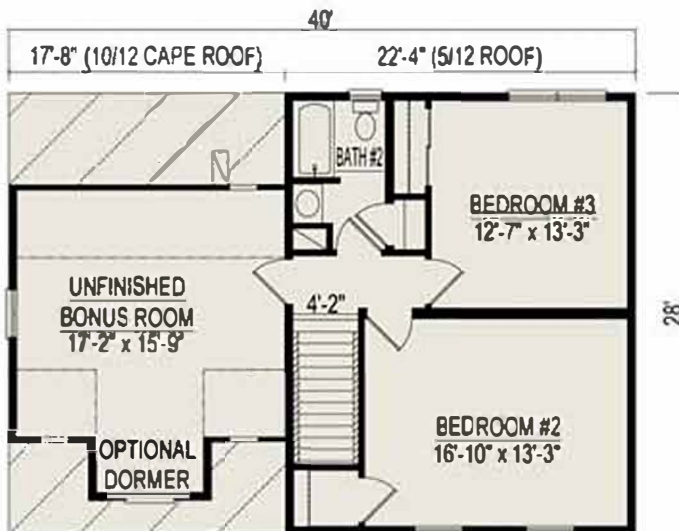


CONVENIENT,  
 COST-EFFECTIVE,  
 HIGH QUALITY HOMES

CALL MARTY (231) 463 3900  
 350 W. Wexford Ave. (M-37)  
 Buckley, MI 49620



**FIRST FLOOR PLAN**



**SECOND FLOOR PLAN**

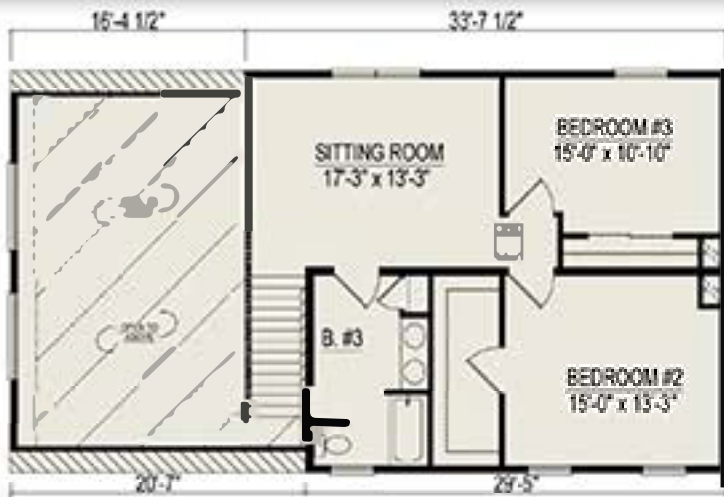
New for 2020!



# Mountainview

3 Bedrooms, 3 Bathrooms, 2288 Square Feet

Some items shown may be optional or constructed on site



SECOND FLOOR PLAN

**Heckaman  
Homes**



CONVENIENT,  
COST-EFFECTIVE,  
HIGH QUALITY HOMES

CALL MARTY (231) 463 3900  
350 W. Wexford Ave. (M-37)  
Buckley, MI 49620



FIRST FLOOR PLAN

**Heckaman  
Homes**



CONVENIENT,  
COST-EFFECTIVE,  
HIGH QUALITY HOMES

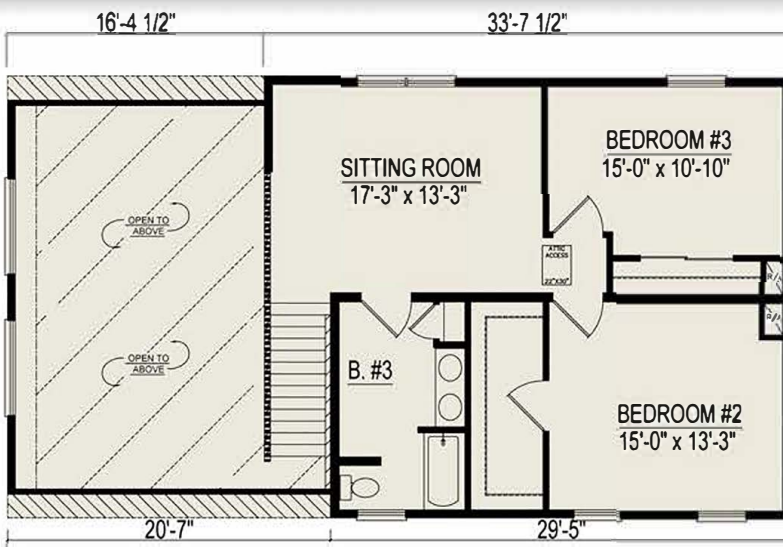
CALL MARTY (231) 463 3900  
350 W. Wexford Ave. (M-37)  
Buckley, MI 49620



# Mountainview II

3 Bedrooms, 3 Bathrooms, 2288 Square Feet

Some items shown may be optional or constructed on site



SECOND FLOOR PLAN

**Heckaman  
Homes**



CONVENIENT,  
COST-EFFECTIVE,  
HIGH QUALITY HOMES

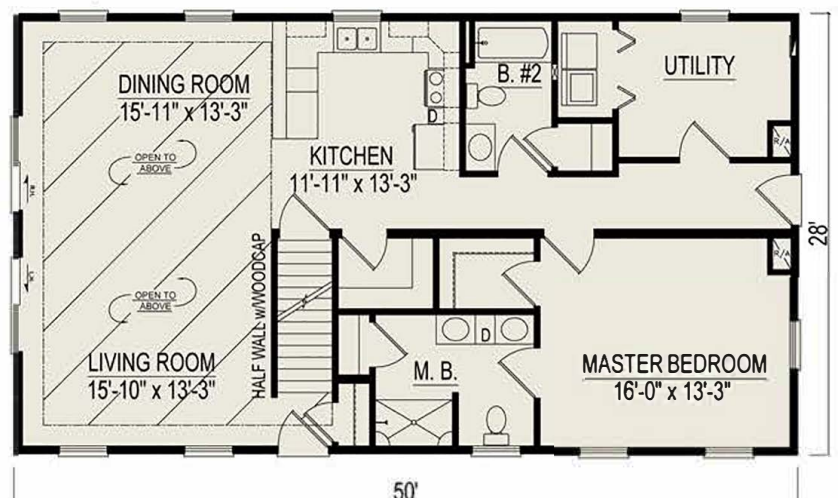
CALL MARTY (231) 463 3900  
350 W. Wexford Ave. (M-37)  
Buckley, MI 49620

**Heckaman  
Homes**



CONVENIENT,  
COST-EFFECTIVE,  
HIGH QUALITY HOMES

CALL MARTY (231) 463 3900  
350 W. Wexford Ave. (M-37)  
Buckley, MI 49620



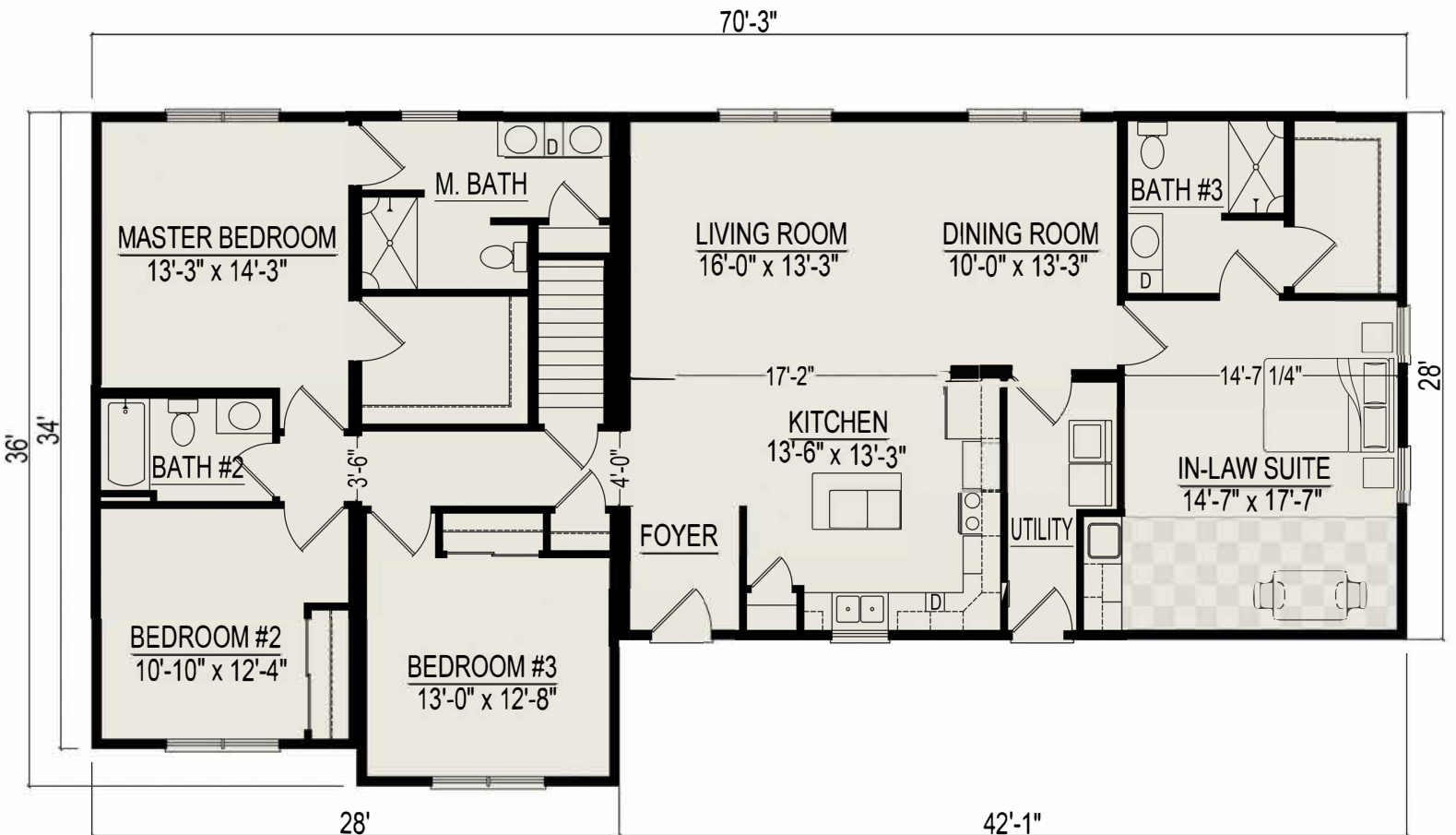
FIRST FLOOR PLAN



# Multi-Gen Ranch

4 Bedrooms, 3 Bathrooms, 2156 Square Feet

Some items shown may be optional or constructed on site



**Heckaman  
Homes**



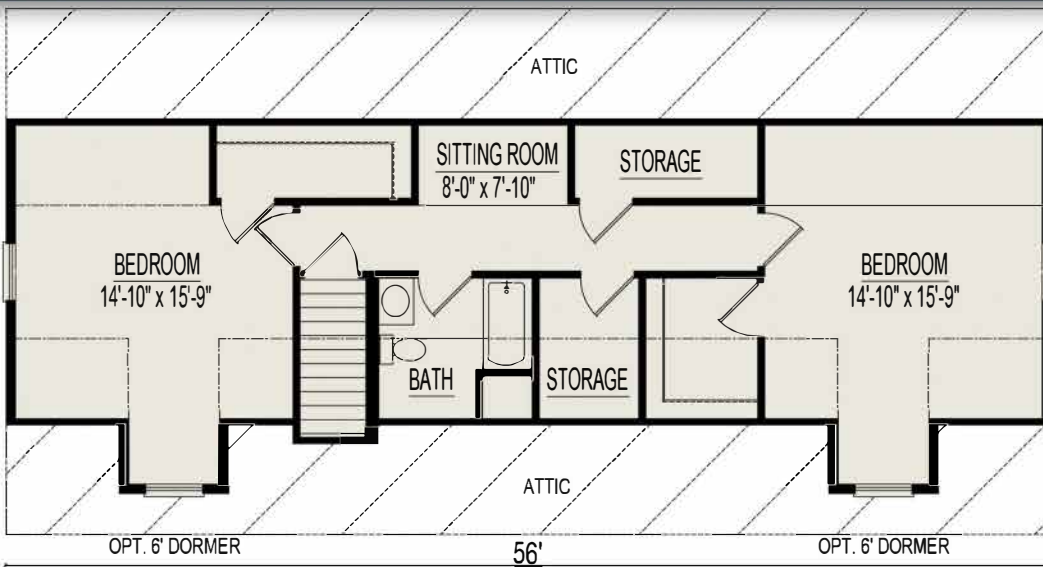
CONVENIENT,  
COST-EFFECTIVE,  
HIGH QUALITY HOMES

CALL MARTY (231) 463 3900  
350 W. Wexford Ave. (M-37)  
Buckley, MI 49620



# New Bedford

3 Bedroom, 2 Bathrooms, 1568 Square Feet  
 930 Square Feet for Proposed 2nd Floor  
 Some Items shown may be optional or constructed on site

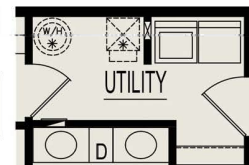
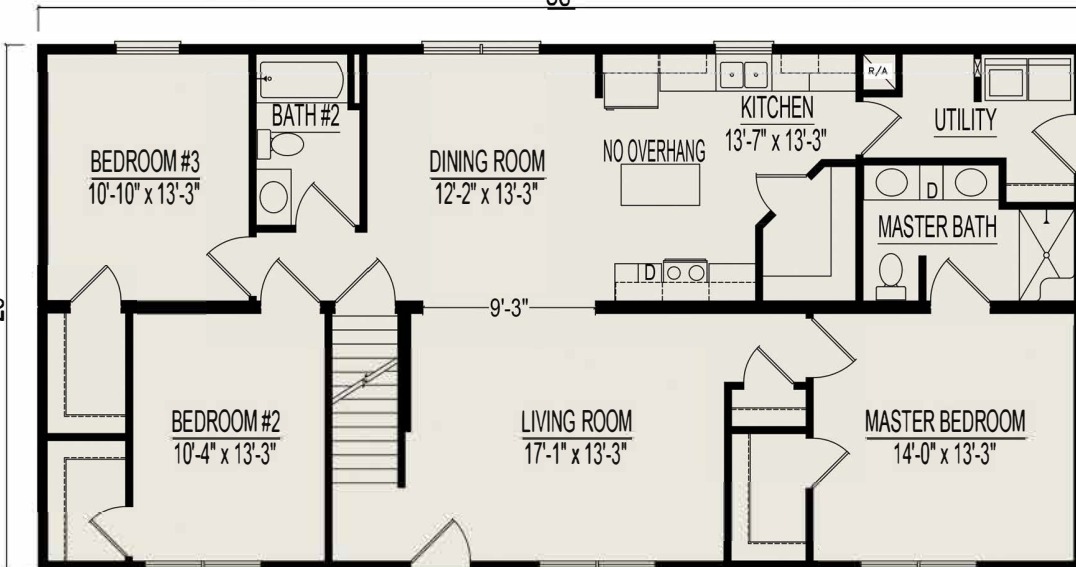


**Heckaman  
Homes**



CALL MARTY (231) 463 3900  
 350 W. Wexford Ave. (M-37)  
 Buckley, MI 49620

**Proposed 2nd Floor Plan  
 (Finished on site by others)**



**Crawlspace Plan**

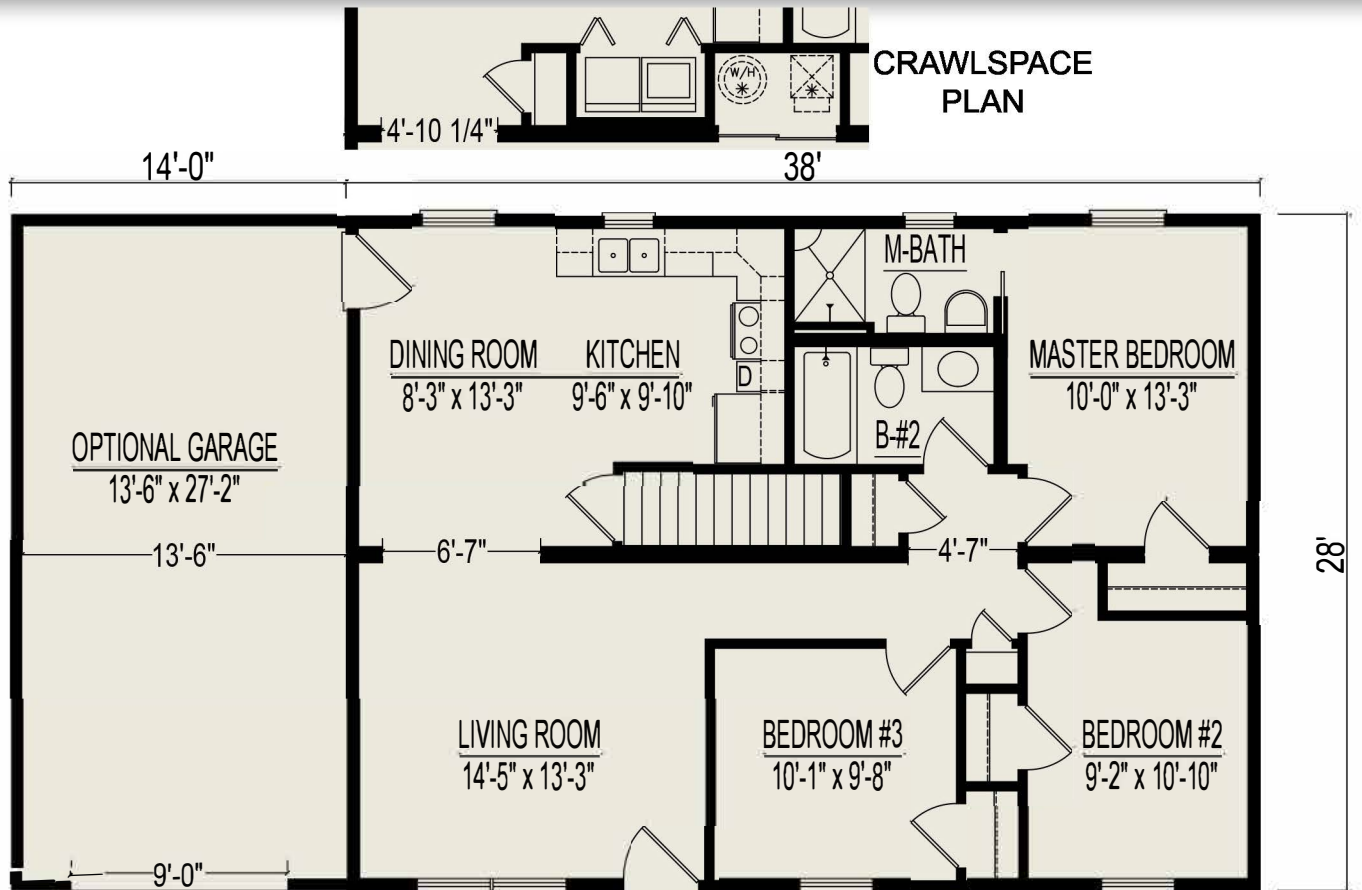
**1st Floor Basement Plan**



# Patriot III

3 Bedrooms, 2 Bathrooms, 1064 Square Feet  
Optional Garage 392 Square Feet

Some items shown may be optional or constructed on site



**Heckaman  
Homes**



CONVENIENT,  
COST-EFFECTIVE,  
HIGH QUALITY HOMES

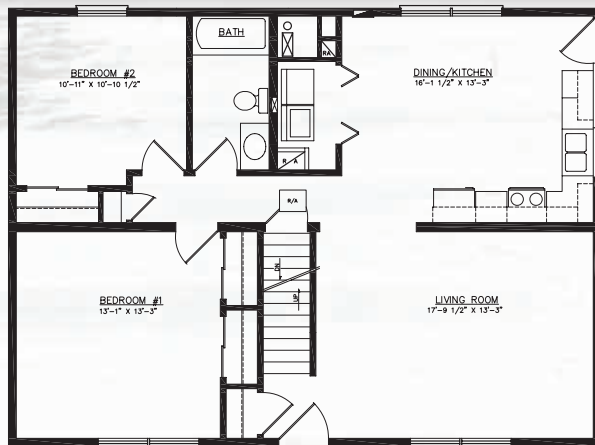
CALL MARTY (231) 463 3900  
350 W. Wexford Ave. (M-37)  
Buckley, MI 49620



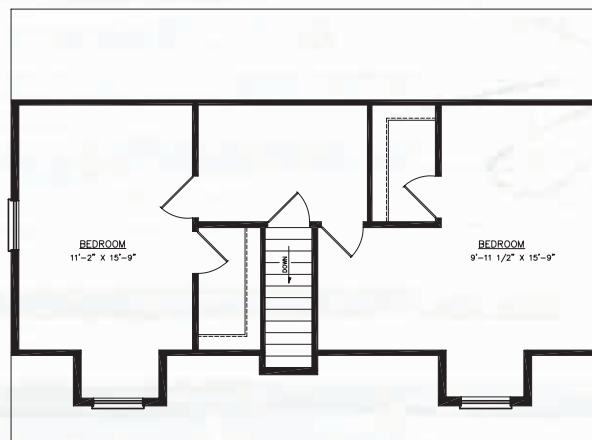
1ST FL. SQ. FT.	1,064
2ND FL. SQ. FT.	646
DIMENSIONS	28 x 38
BEDROOMS	2
BATHS	1

# Pembroke

1ST FLOOR  
BASEMENT PLAN



PROPOSED 2ND FLOOR  
(FINISHED ON SITE BY OTHERS)



WINDOW CONFIGURATION  
WHEN OPT. CORNER  
IS NOT INSTALLED.

WINDOW CONFIGURATION  
WHEN OPT. CORNER  
IS NOT INSTALLED.

**Heckaman  
Homes**



CONVENIENT,  
COST-EFFECTIVE,  
HIGH-QUALITY HOMES

CALL MARTY (231) 463 3900  
350 W. Wexford Ave. (M-37)  
Buckley, MI 49620

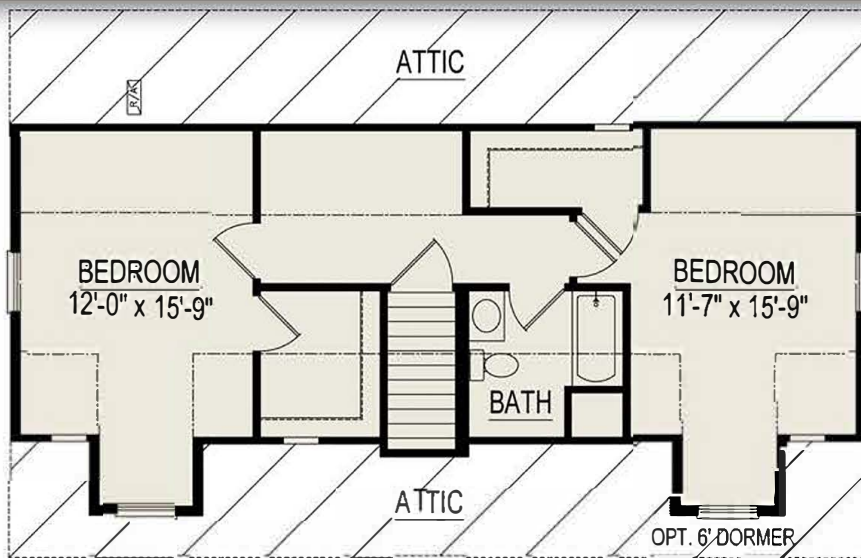
*Renderings are artists interpretations only. Illustrations may show dormers, garages, porches and other options that are not standard in the basic floor plan or are added on-site by builder.*



# Providence II 44

1 Bedroom, 2 Bathrooms, 1232 Square Feet  
741 Square Feet for Proposed 2nd Floor

Some items shown may be optional or constructed on site



Proposed 2nd Floor Plan  
(Finished on site by others)

**Heckaman  
Homes**



CONVENIENT,  
COST-EFFECTIVE,  
HIGH QUALITY HOMES

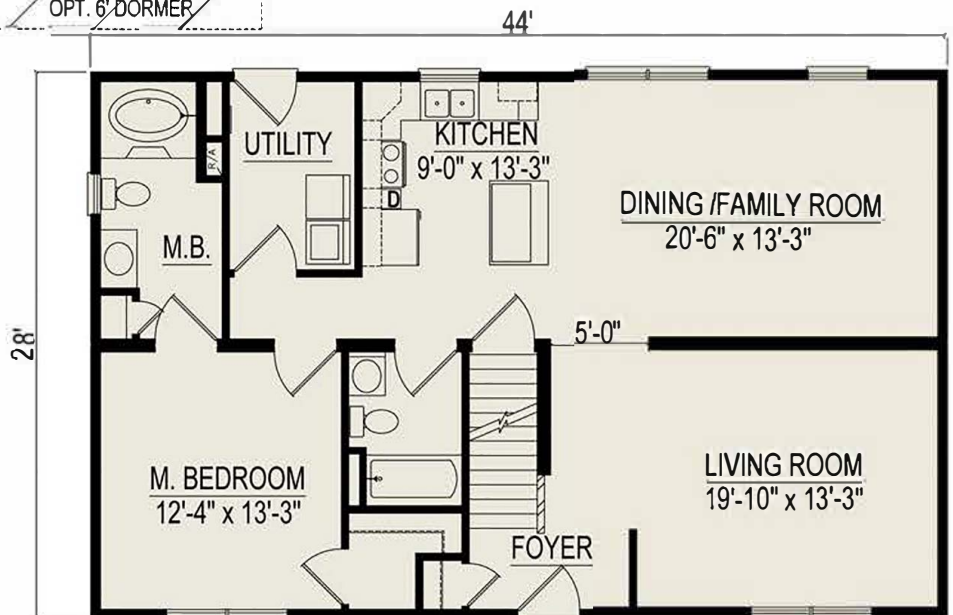
CALL MARTY (231) 463 3900  
350 W. Wexford Ave. (M-37)  
Buckley, MI 49620

**Heckaman  
Homes**



CONVENIENT,  
COST-EFFECTIVE,  
HIGH QUALITY HOMES

CALL MARTY (231) 463 3900  
350 W. Wexford Ave. (M-37)  
Buckley, MI 49620



1st Floor Basement Plan

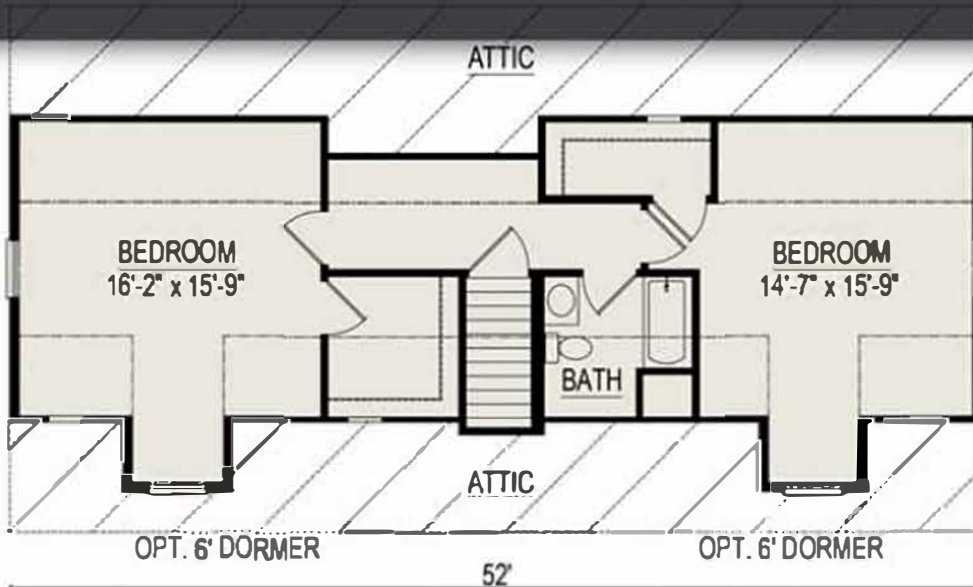




# Providence II 52

2 Bedrooms, 2 Bathrooms, 1456 Square Feet  
867 Square Feet for Proposed 2nd Floor

*Some items shown may be optional or constructed on site*



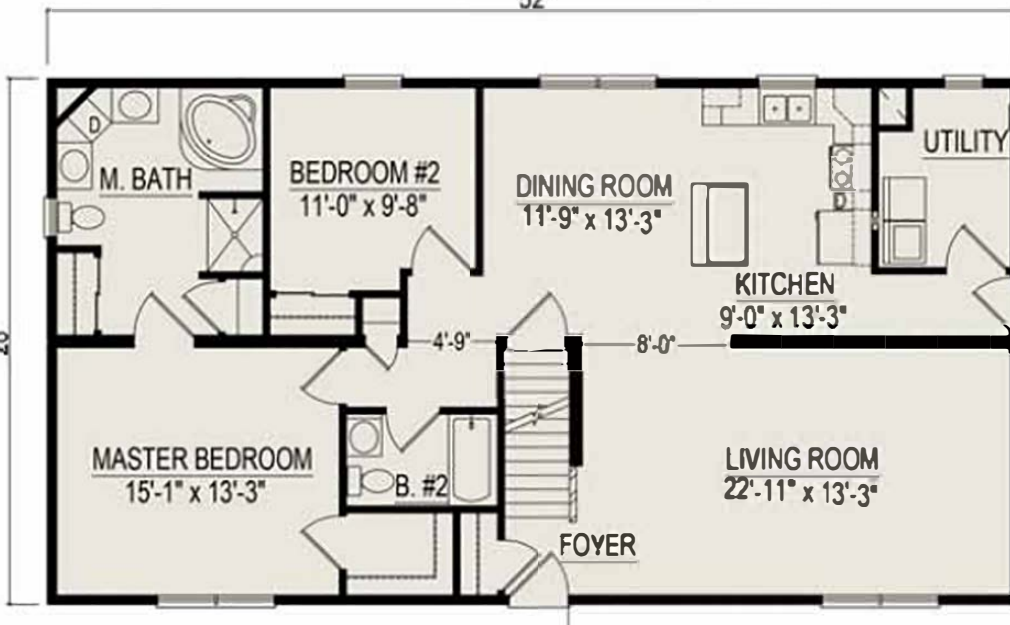
**Heckaman  
Homes**



CONVENIENT,  
COST-EFFECTIVE,  
HIGH QUALITY HOMES

CALL MARTY (231) 463 3900  
350 W. Wexford Ave. (M-37)  
Buckley, MI 49620

**Proposed 2nd Floor Plan  
(Finished on site by others)**



**Crawl Space  
Plan**

**1st Floor Basement Plan**



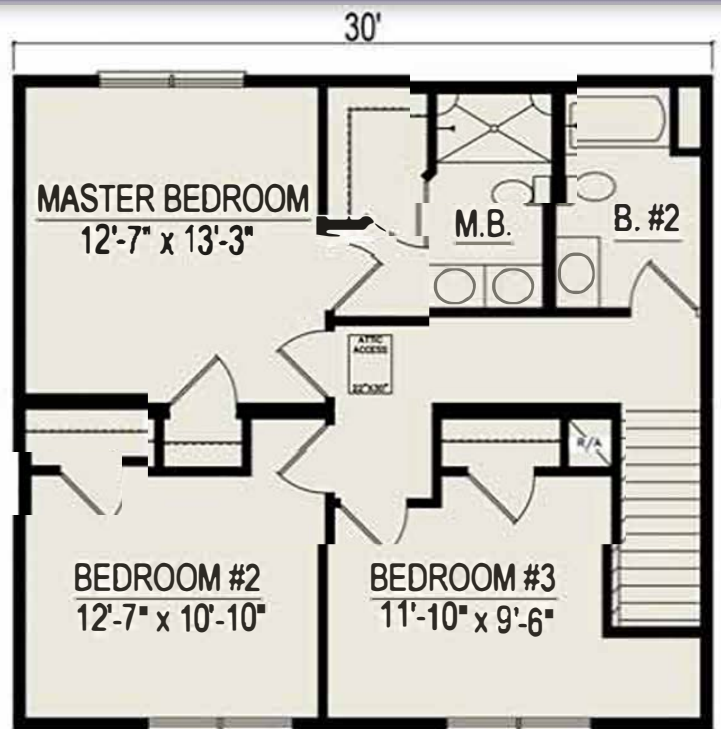
# Reagan II

3 Bedrooms, 2-1/2 Bathrooms, 1680 Square Feet

Some items shown may be optional or constructed on site



FIRST FLOOR PLAN



SECOND FLOOR PLAN

**Heckaman  
Homes**



CONVENIENT,  
COST-EFFECTIVE,  
HIGH QUALITY HOMES

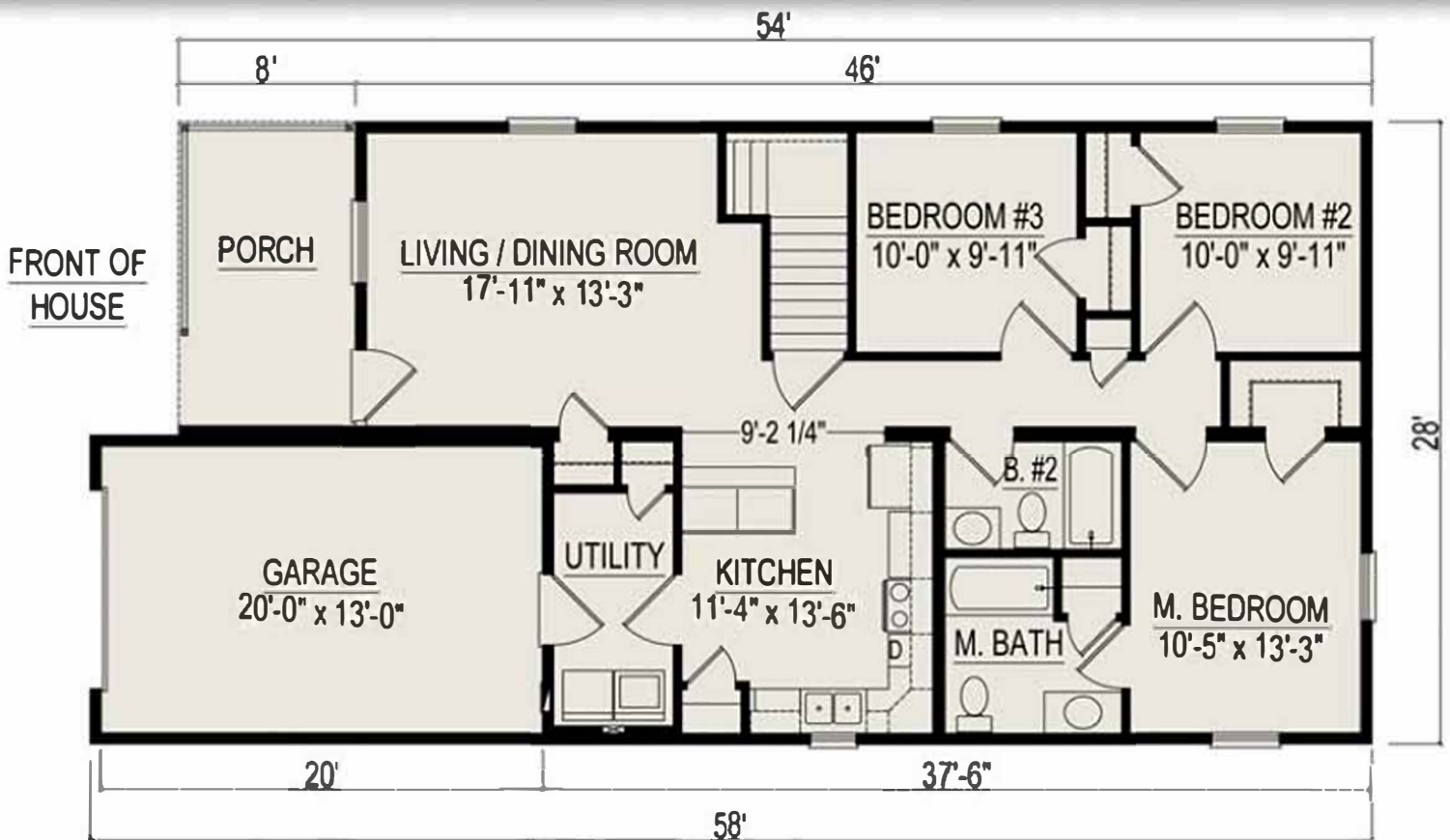
CALL MARTY (231) 463 3900  
350 W. Wexford Ave. (M-37)  
Buckley, MI 49620



# Remington II

3 Bedrooms, 2 Bathrooms, 1169 Sq. Ft. Living Space  
287 Sq. Ft. Garage

*Some items shown may be optional or constructed on site*



**CRAWLSPACE PLAN**

**Heckaman  
Homes**



CONVENIENT,  
COST-EFFECTIVE,  
HIGH QUALITY HOMES

CALL MARTY (231) 463 3900  
350 W. Wexford Ave. (M-37)  
Buckley, MI 49620

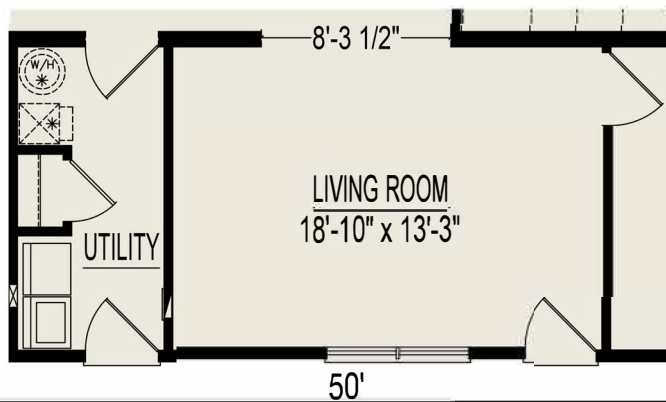


# Republic III

3 Bedrooms, 2 Bathrooms, 1400 Square Feet

Some Items shown may be optional or constructed on site

CRAWLSPACE PLAN

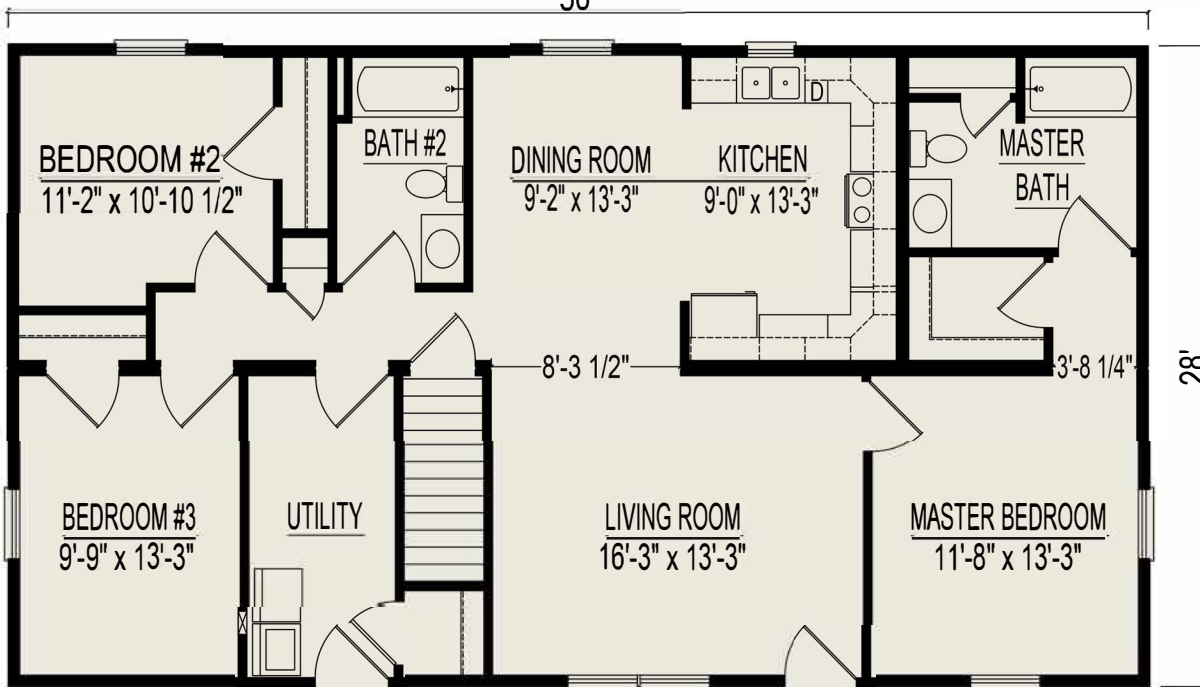


Heckaman  
Homes



CONVENIENT,  
COST-EFFECTIVE,  
HIGH QUALITY HOMES

CALL MARTY (231) 463 3900  
350 W. Wexford Ave. (M-37)  
Buckley, MI 49620





# Retreat II

1 Bedrooms, 1 Bathroom, 896 Square Feet  
 480 Square Feet for Proposed 2nd Floor  
 Some items shown may be optional or constructed on site

**Crawl Space Plan**



**Heckaman  
Homes**

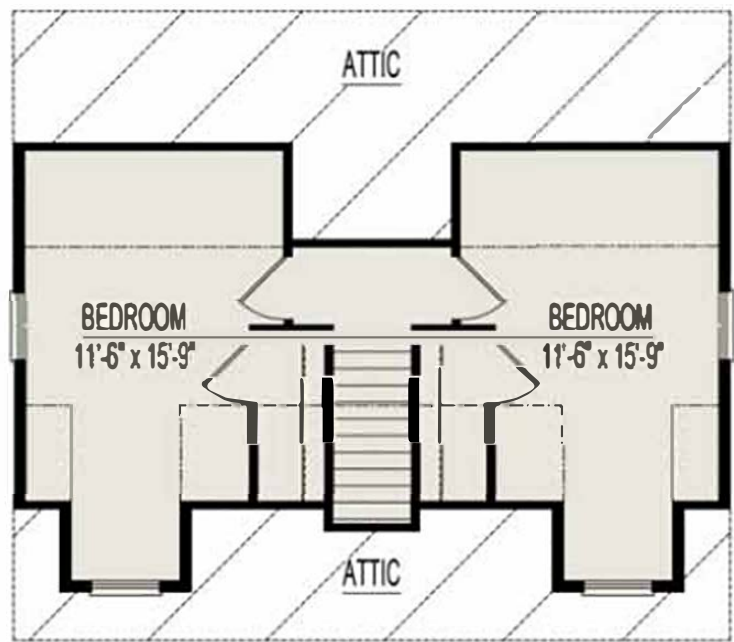


CONVENIENT,  
 COST-EFFECTIVE,  
 HIGH QUALITY HOMES

CALL MARTY (231) 463 3900  
 350 W. Wexford Ave. (M-37)  
 Buckley, MI 49620



**1st Floor Basement Plan**



6' OPTIONAL DORMER

6' OPTIONAL DORMER

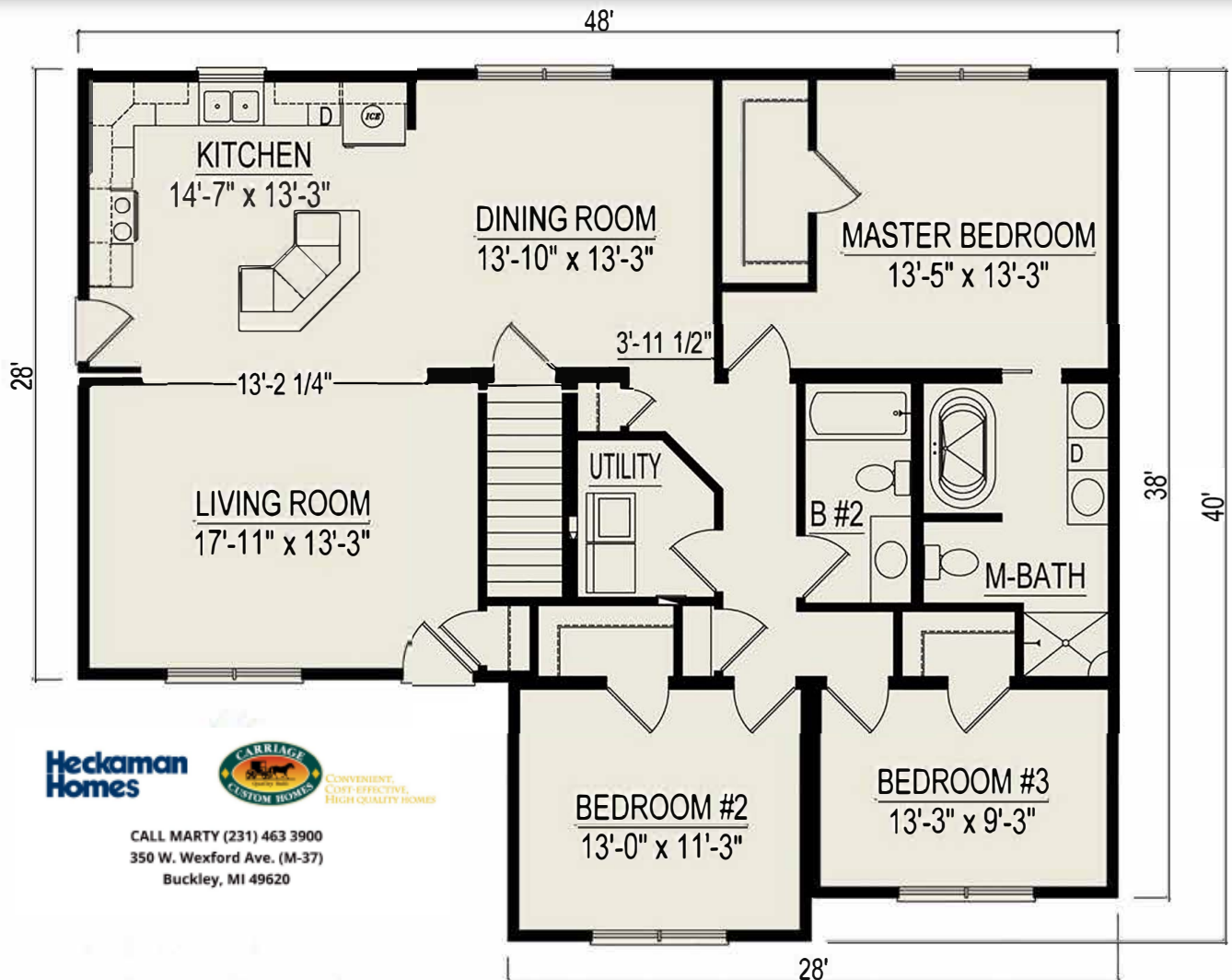
**Proposed 2nd Floor Plan  
 (Finished on site by others)**



# Rockport II

3 Bedrooms, 2 Bathrooms, 1652 Square Feet

Some items shown may be optional or constructed on site



**Heckaman  
Homes**



CONVENIENT,  
COST-EFFECTIVE,  
HIGH-QUALITY HOMES

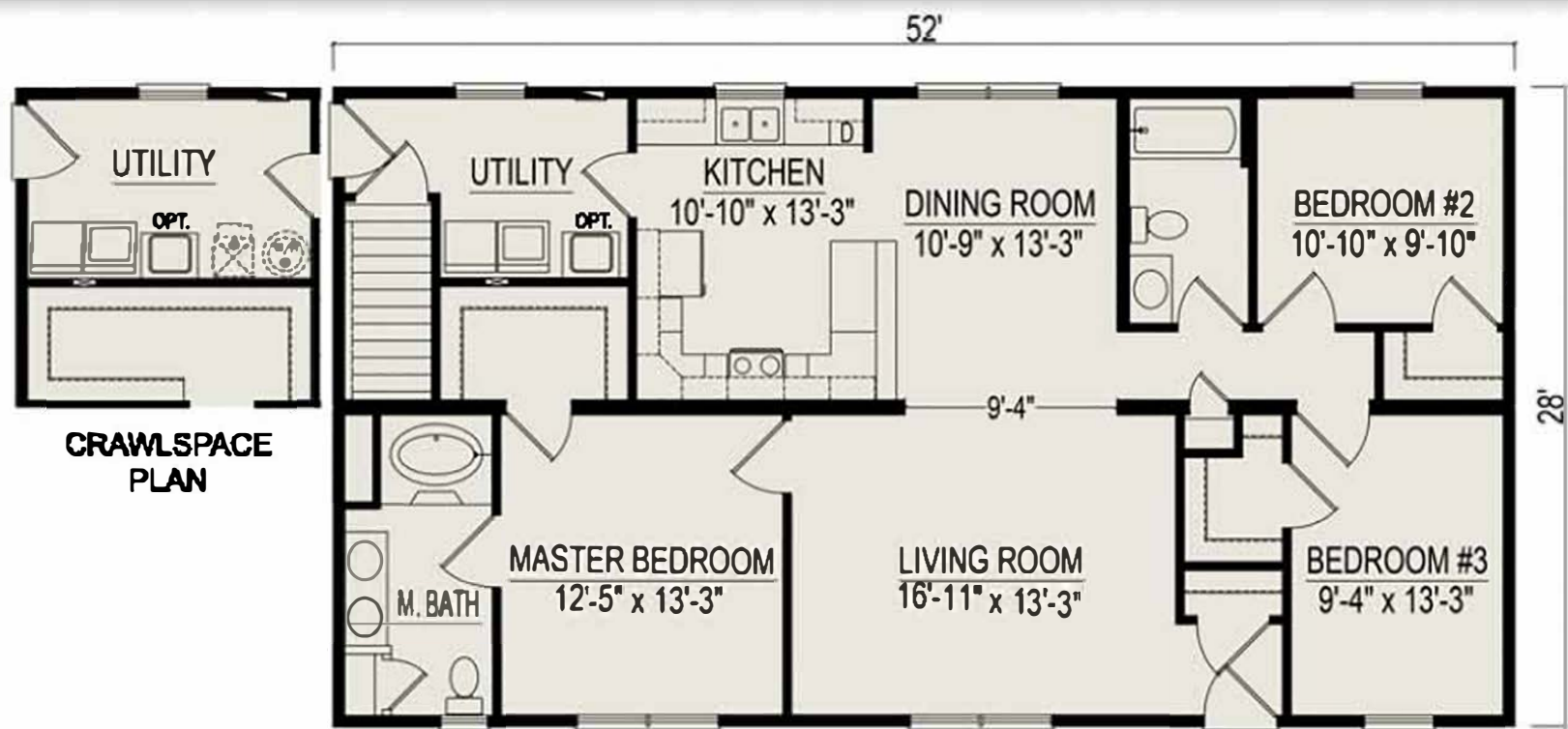
CALL MARTY (231) 463 3900  
350 W. Wexford Ave. (M-37)  
Buckley, MI 49620



# Somerset II

3 Bedrooms, 2 Bathrooms, 1456 Square Feet

*Some items shown may be optional or constructed on site*



**CRAWLSPACE PLAN**

**Heckaman  
Homes**



CONVENIENT,  
COST-EFFECTIVE,  
HIGH QUALITY HOMES

CALL MARTY (231) 463 3900  
350 W. Wexford Ave. (M-37)  
Buckley, MI 49620



# Southwind

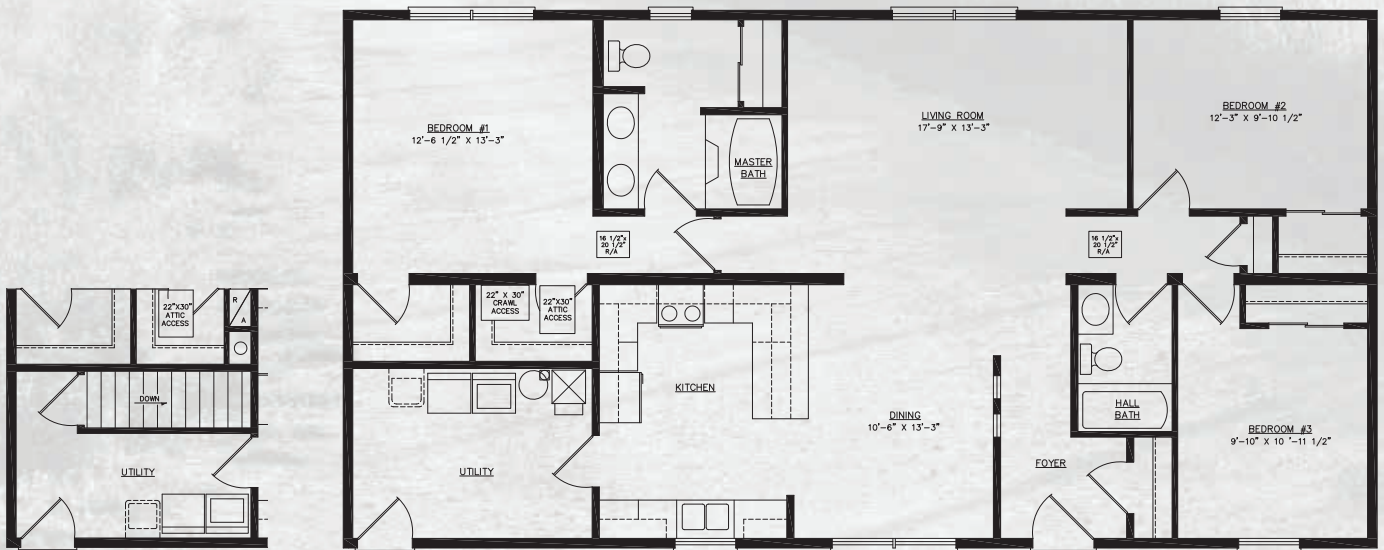
SQ. FT.	1,512
DIMENSIONS	28 x 54
BEDROOMS	3
BATHS	2

**Heckaman  
Homes**



CONVENIENT,  
COST EFFECTIVE,  
HIGH QUALITY HOMES

CALL MARTY (231) 463 3900  
350 W. Wexford Ave. (M-37)  
Buckley, MI 49620



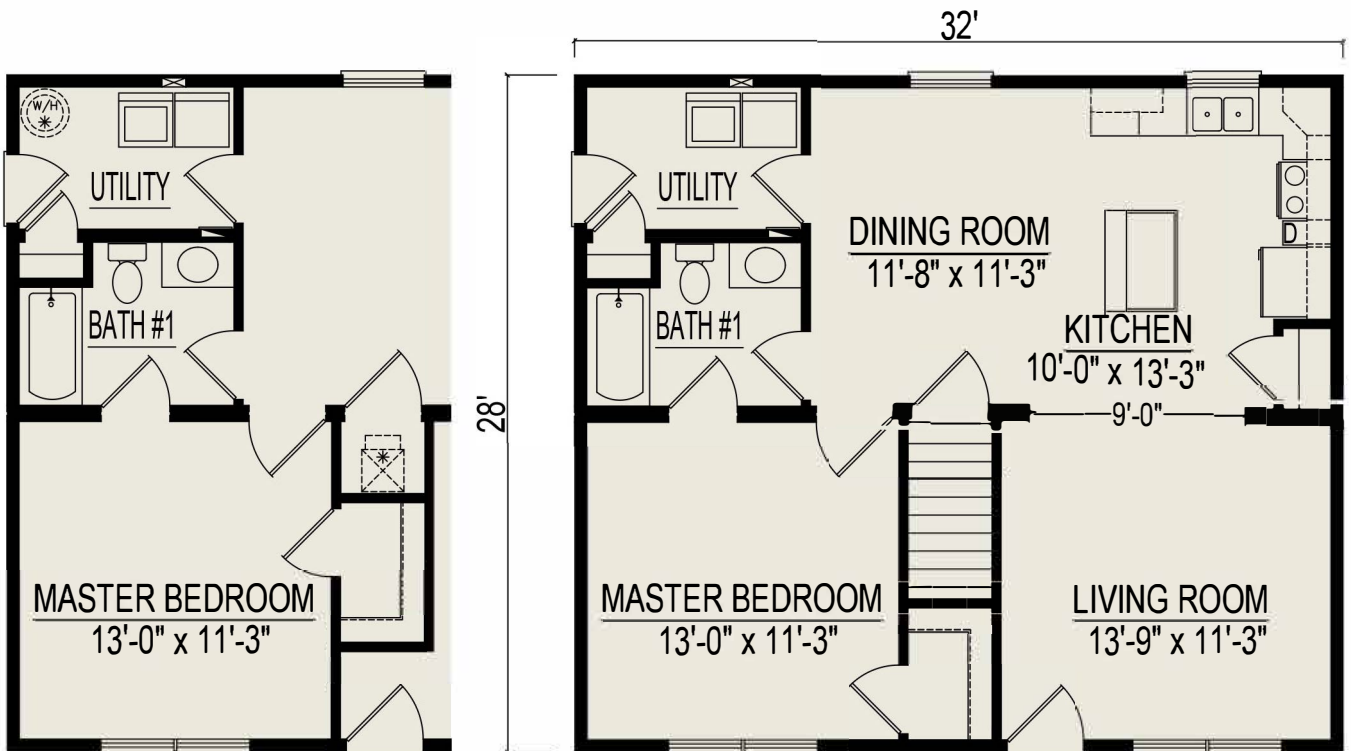




# Suite II

1 Bedroom, 1 Bathroom, 896 Square Feet

Some Items shown may be optional or constructed on site



**Heckaman  
Homes**



CONVENIENT,  
COST-EFFECTIVE,  
HIGH QUALITY HOMES

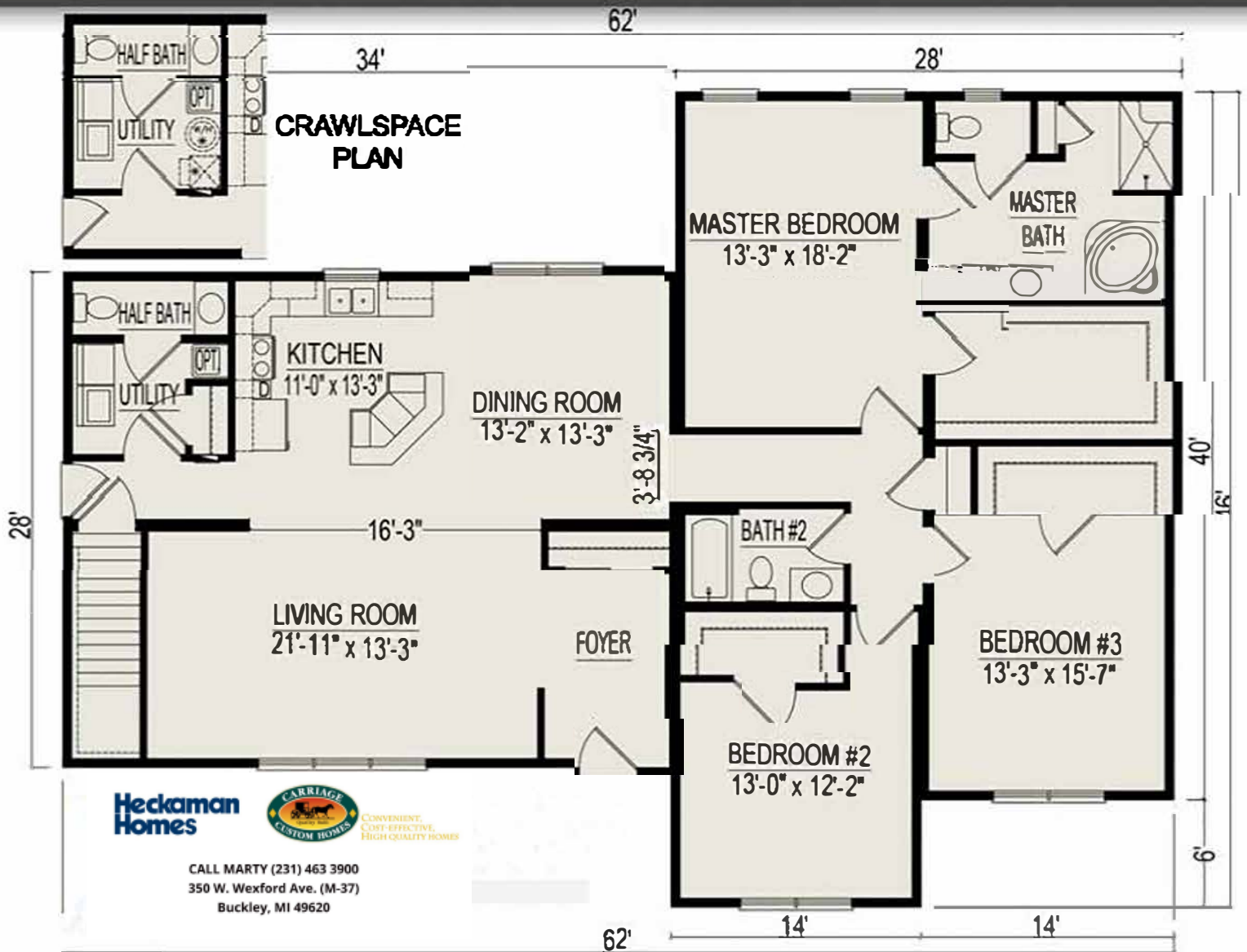
CALL MARTY (231) 463 3900  
350 W. Wexford Ave. (M-37)  
Buckley, MI 49620



# Summit III - 3BR

3 Bedrooms, 2-1/2 Bathrooms, 2156 Square Feet

Some items shown may be optional or constructed on site



**Heckaman Homes**



CONVENIENT,  
COST-EFFECTIVE,  
HIGH QUALITY HOMES

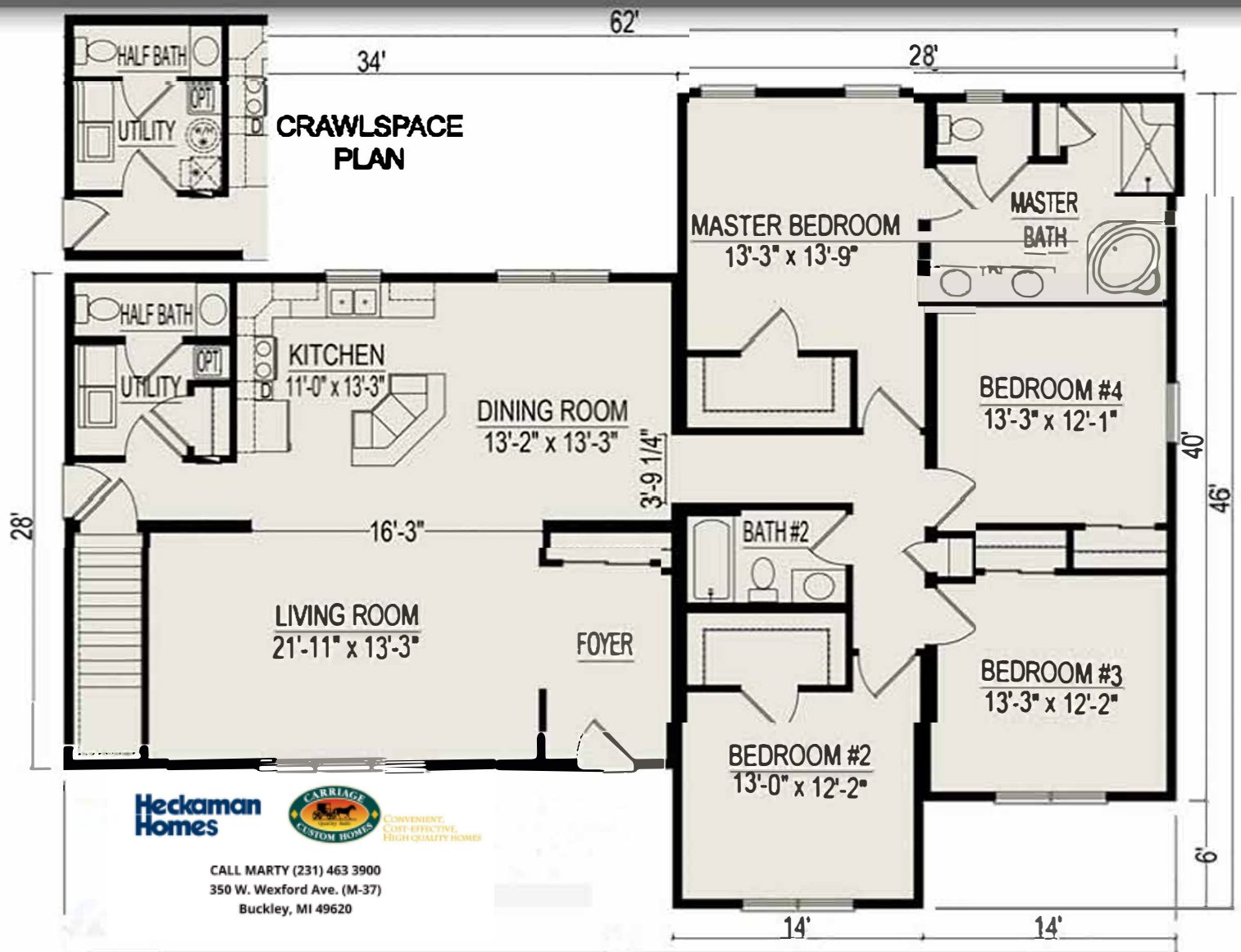
CALL MARTY (231) 463 3900  
350 W. Wexford Ave. (M-37)  
Buckley, MI 49620



# Summit IV - 4BR

4 Bedrooms, 2-1/2 Bathrooms, 2156 Square Feet

Some items shown may be optional or constructed on site

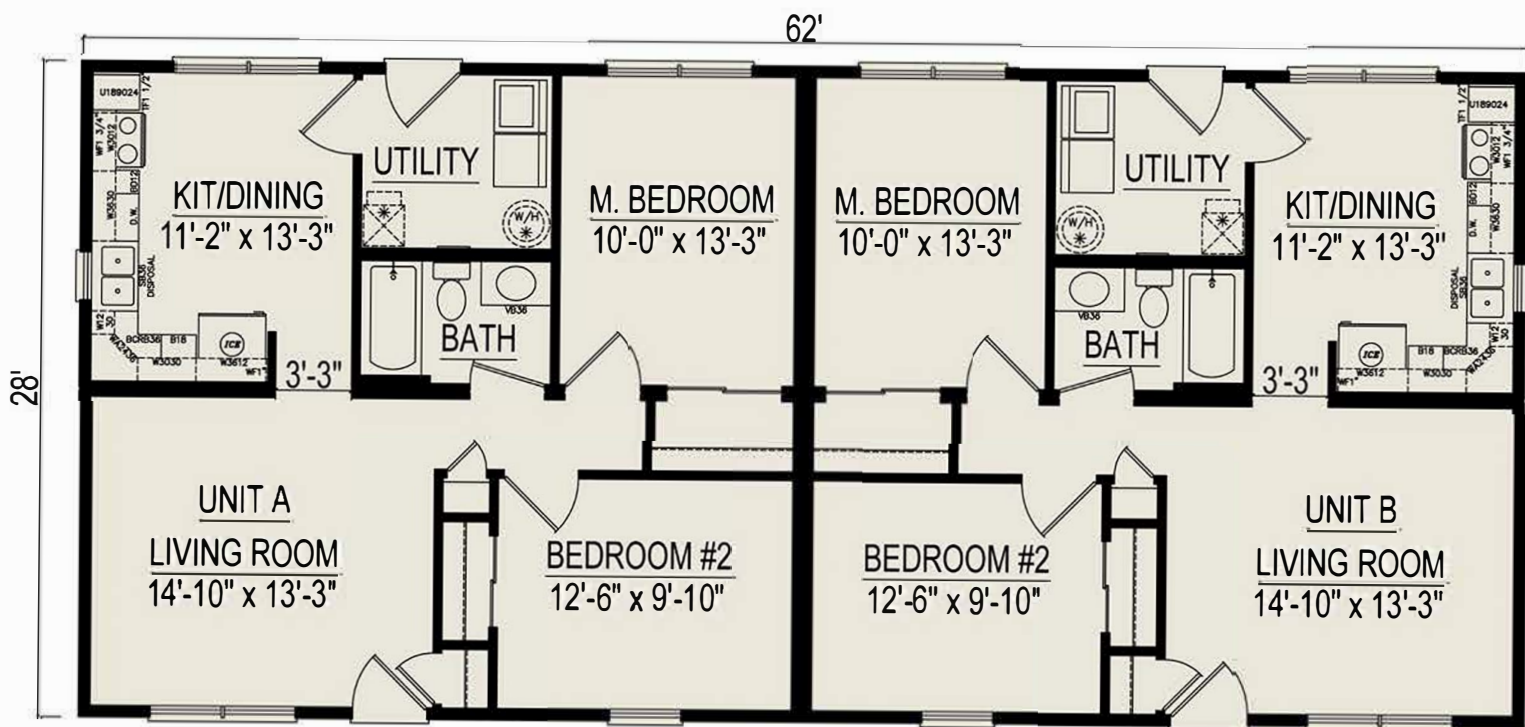




# Suntree II Duplex

2 Bedrooms, 1 Bathroom, 868 Square Feet

Some items shown may be optional or constructed on site



**Heckaman  
Homes**



CONVENIENT,  
COST-EFFECTIVE,  
HIGH QUALITY HOMES

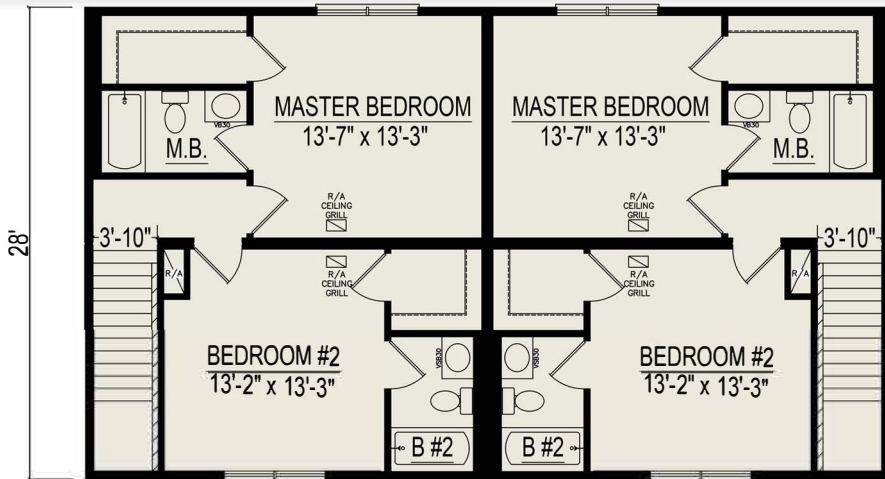
CALL MARTY (231) 463 3900  
350 W. Wexford Ave. (M-37)  
Buckley, MI 49620



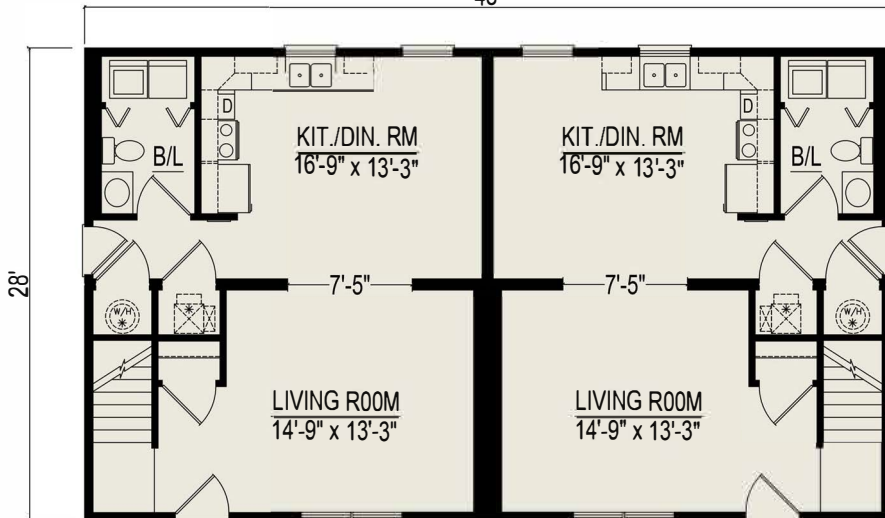
# Townhome Duplex

2 Bedrooms, 2-1/2 Bathrooms  
1344 Square Feet - Per Unit

Some items shown may be optional or constructed on site



**SECOND FLOOR PLAN** 48'



**FIRST FLOOR PLAN**

**Heckaman  
Homes**



CONVENIENT,  
COST-EFFECTIVE,  
HIGH QUALITY HOMES

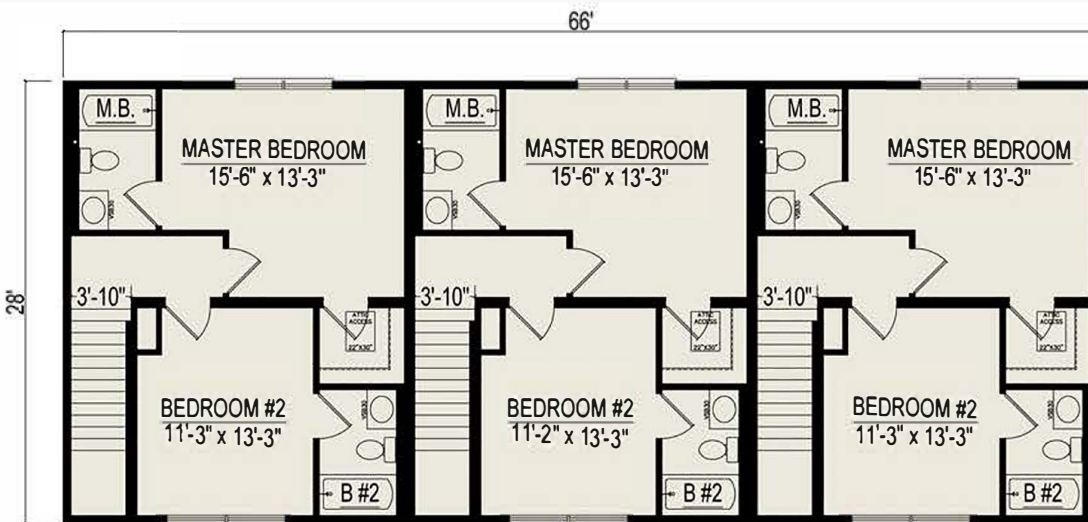
CALL MARTY (231) 463 3900  
350 W. Wexford Ave. (M-37)  
Buckley, MI 49620



# Townhome II Triplex

2 Bedrooms, 2-1/2 Bathrooms,  
1,232 Square Feet

Some items shown may be optional or constructed on site

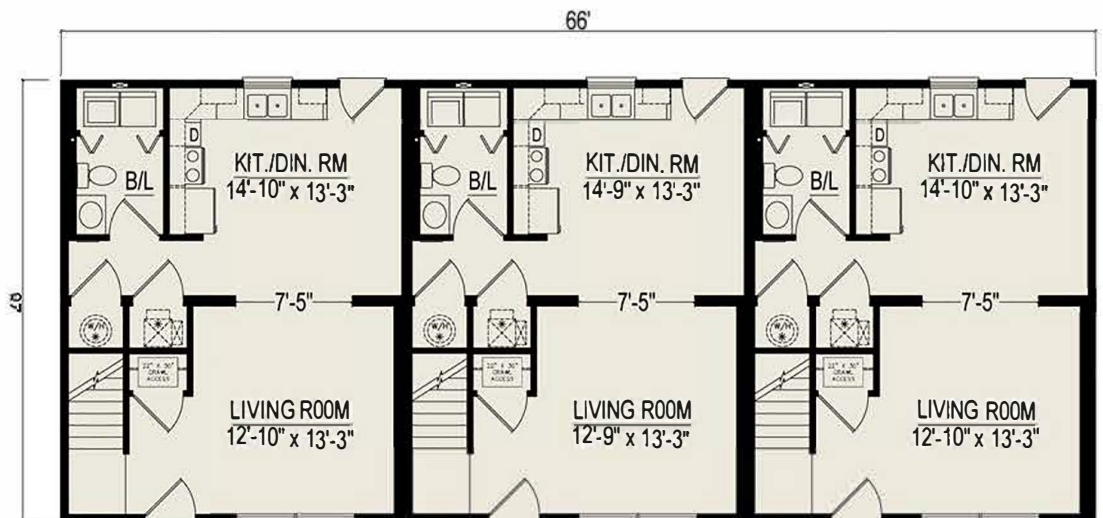


SECOND FLOOR PLAN

**Heckaman  
Homes**



CALL MARTY (231) 463 3900  
350 W. Wexford Ave. (M-37)  
Buckley, MI 49620



FIRST FLOOR PLAN

**Heckaman  
Homes**



CONVENIENT,  
COST-EFFECTIVE,  
HIGH-QUALITY HOMES

CALL MARTY (231) 463 3900  
350 W. Wexford Ave. (M-37)  
Buckley, MI 49620



SQ. FT.	1,652
DIMENSIONS	50 x 42
BEDROOMS	3
BATHS	2

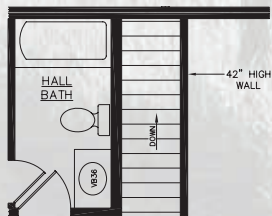
# Westwood

**Heckaman Homes**



CONVENIENT,  
COST-EFFECTIVE,  
HIGH QUALITY HOMES

CALL MARTY (231) 463 3900  
350 W. Wexford Ave. (M-37)  
Buckley, MI 49620



BASEMENT PLAN



CRAWLSPACE PLAN

*Renderings are artists interpretations only. Illustrations may show garages, porches and other options that are not standard in the basic floor plan or are added on-site by builder.*



# Willowbrook II

3 Bedrooms, 2 Bathrooms, 1568 Square Feet

Some items shown may be optional or constructed on site



**Heckaman  
Homes**



CONVENIENT,  
COST-EFFECTIVE,  
HIGH QUALITY HOMES

CALL MARTY (231) 463 3900  
350 W. Wexford Ave. (M-37)  
Buckley, MI 49620



**CRAWLSPACE  
PLAN**

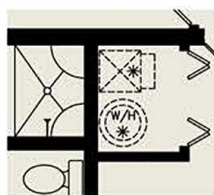
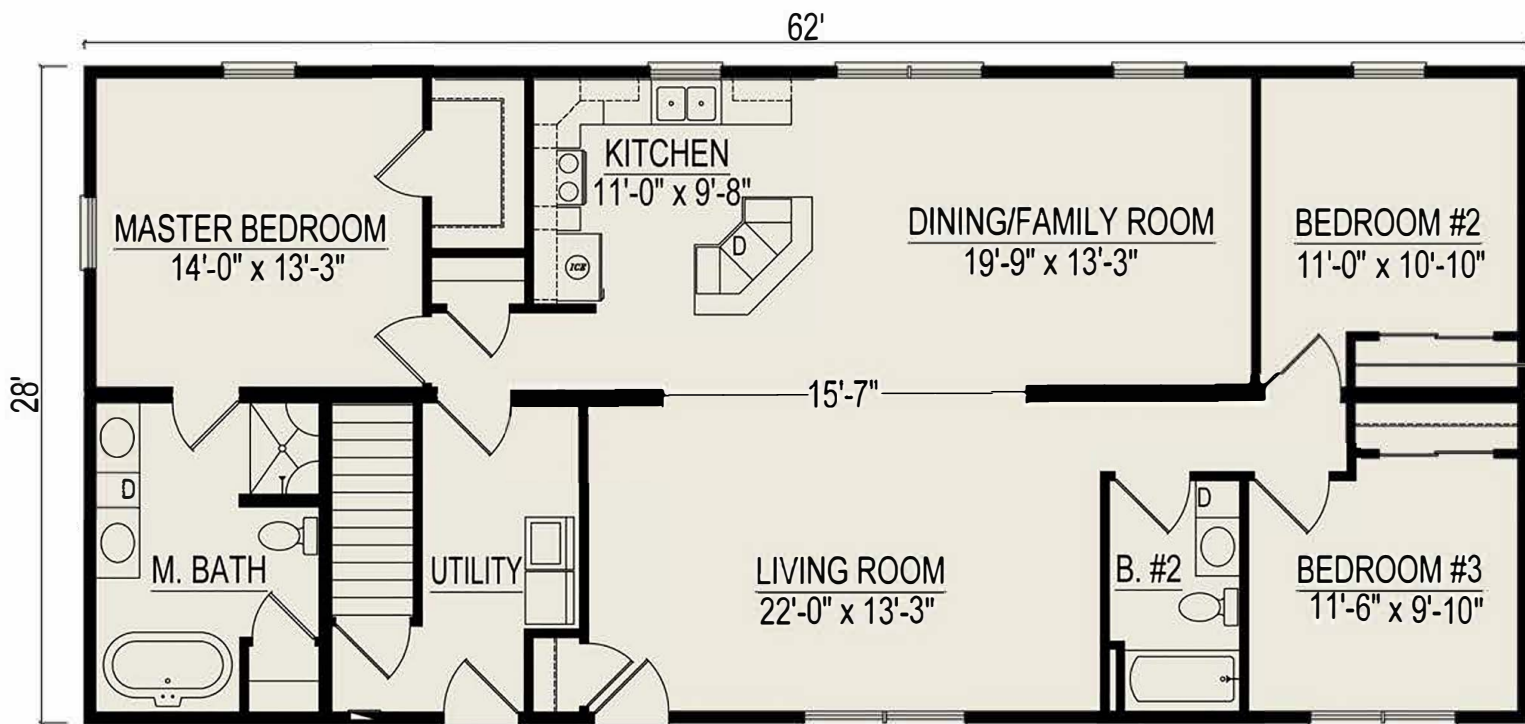




# Winchester II

3 Bedrooms, 2 Bathrooms, 1736 Square Feet

Some items shown may be optional or constructed on site



CRAWLSPACE  
PLAN

**Heckaman  
Homes**



CONVENIENT,  
COST-EFFECTIVE,  
HIGH QUALITY HOMES

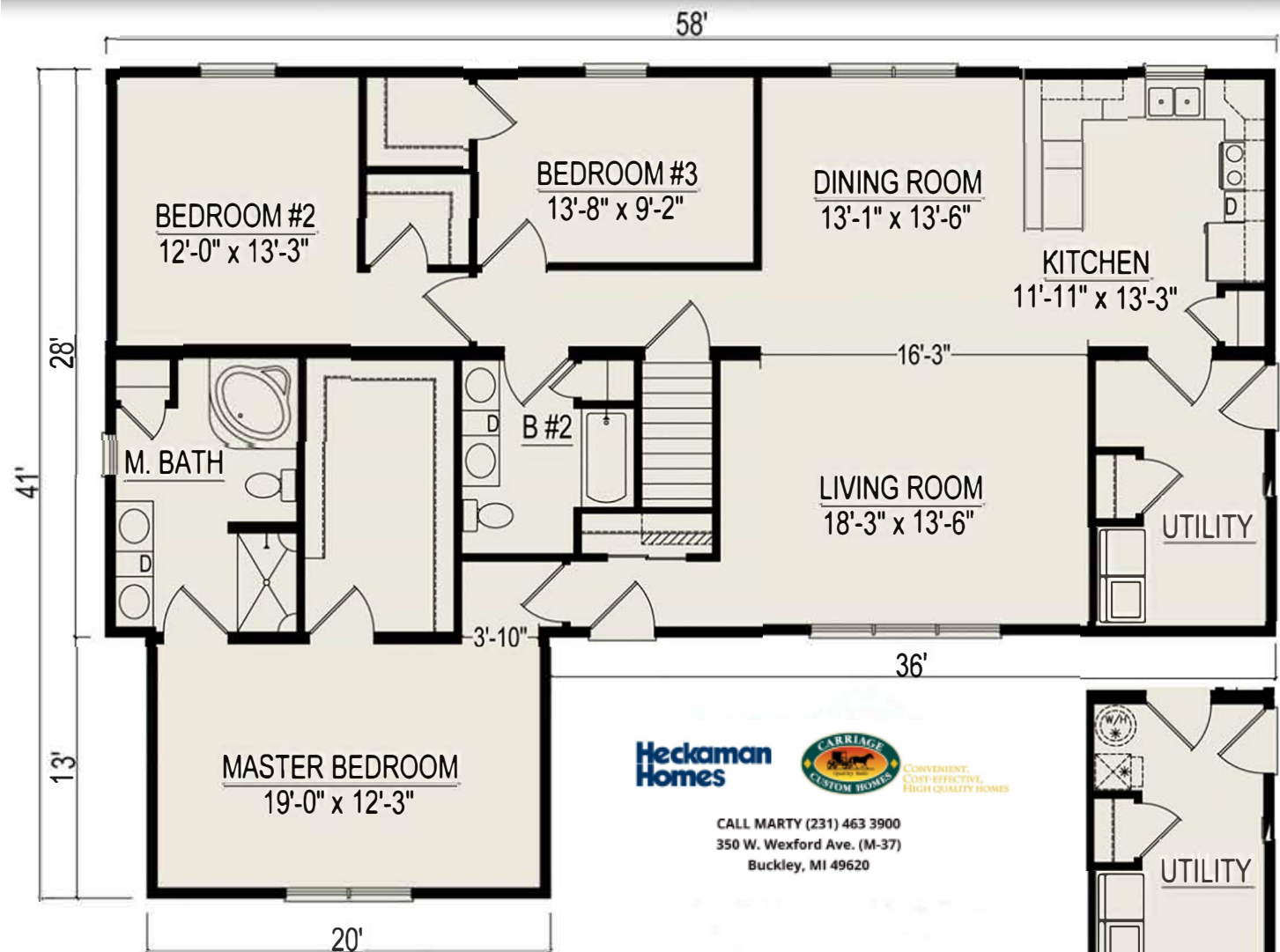
CALL MARTY (231) 463 3900  
350 W. Wexford Ave. (M-37)  
Buckley, MI 49620



# York II

3 Bedrooms, 2 Bathrooms, 1884 Square Feet

Some items shown may be optional or constructed on site



CRAWLSPACE PLAN